

# Product Datasheet

## NKCC1/SLC12A2 Antibody - BSA Free NB100-75623

Unit Size: 0.05 mg

Store at 4C short term. Aliquot and store at -20C long term. Avoid freeze-thaw cycles.

[www.novusbio.com](http://www.novusbio.com)



[technical@novusbio.com](mailto:technical@novusbio.com)

Reviews: 1

Protocols, Publications, Related Products, Reviews, Research Tools and Images at:  
[www.novusbio.com/NB100-75623](http://www.novusbio.com/NB100-75623)

Updated 11/6/2024 v.20.1

Earn rewards for product  
reviews and publications.

Submit a publication at [www.novusbio.com/publications](http://www.novusbio.com/publications)

Submit a review at [www.novusbio.com/reviews/destination/NB100-75623](http://www.novusbio.com/reviews/destination/NB100-75623)



**NB100-75623**

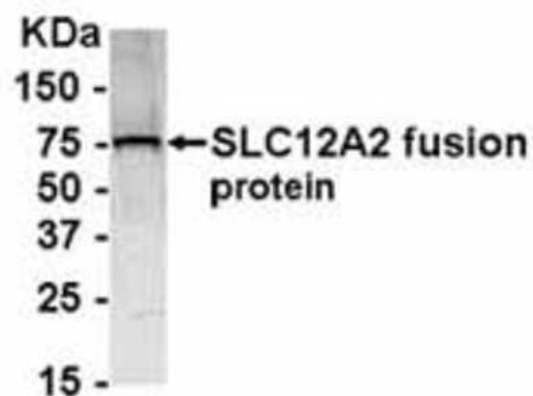
NKCC1/SLC12A2 Antibody - BSA Free

Product Information	
Unit Size	0.05 mg
Concentration	1.0 mg/ml
Storage	Store at 4C short term. Aliquot and store at -20C long term. Avoid freeze-thaw cycles.
Clonality	Polyclonal
Preservative	0.02% Sodium Azide
Purity	Immunogen affinity purified
Buffer	PBS
Product Description	
Host	Chicken
Gene ID	6558
Gene Symbol	SLC12A2
Species	Human, Mouse, Rat, Bovine, Canine, Primate
Reactivity Notes	This antibody is reactive against Human, dog, rat, cow, mouse, chimpanzee.
Specificity/Sensitivity	Chicken Polyclonal to NKCC1
Immunogen	The immunogen for this antibody was a sequence from 800a.a. to 1000a.a. from NKCC1(a 1212a.a. long protein)
Notes	Chicken products cannot be exported to Canada.
Product Application Details	
Applications	Western Blot, Immunohistochemistry
Recommended Dilutions	Western Blot 1:200-1:500, Immunohistochemistry
Application Notes	Western Blot: E coli-derived fusion protein as test antigen. Affinity-purified IgY dilution 1:2000. Goat anti-IgY-HRP dilution 1:1000. Colorimetric method for signal development.

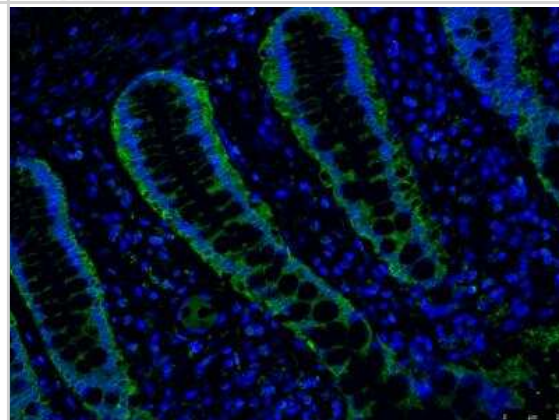


## Images

Western Blot: NKCC1/SLC12A2 Antibody [NB100-75623] - E. coli-derived fusion protein as test antigen. Affinity-purified IgY dilution 1:2000, Goat anti-IgY-HRP dilution 1:1000. Colorimetric method for signal development (anti-SLC12A2).



Immunohistochemistry: NKCC1/SLC12A2 Antibody [NB100-75623] - Human colon tissue was incubated with anti-NKCC1 antibody at 5 ug/mL (1:200) overnight at 4C and detected with Alexa Fluor 488 Goat anti-Chicken (1:200 Invitrogen, cat# A11039). Nuclei stained with DAPI. Image from verified customer review.





### **Novus Biologicals USA**

10730 E. Briarwood Avenue  
Centennial, CO 80112  
USA  
Phone: 303.730.1950  
Toll Free: 1.888.506.6887  
Fax: 303.730.1966  
nb-customerservice@bio-techne.com

### **Bio-Techne Canada**

21 Canmotor Ave  
Toronto, ON M8Z 4E6  
Canada  
Phone: 905.827.6400  
Toll Free: 855.668.8722  
Fax: 905.827.6402  
canada.inquires@bio-techne.com

### **Bio-Techne Ltd**

19 Barton Lane  
Abingdon Science Park  
Abingdon, OX14 3NB, United Kingdom  
Phone: (44) (0) 1235 529449  
Free Phone: 0800 37 34 15  
Fax: (44) (0) 1235 533420  
info.EMEA@bio-techne.com

### **General Contact Information**

[www.novusbio.com](http://www.novusbio.com)  
Technical Support: [nb-technical@bio-techne.com](mailto:nb-technical@bio-techne.com)  
Orders: [nb-customerservice@bio-techne.com](mailto:nb-customerservice@bio-techne.com)  
General: [novus@novusbio.com](mailto:novus@novusbio.com)

### **Limitations**

This product is for research use only and is not approved for use in humans or in clinical diagnosis. Primary Antibodies are guaranteed for 1 year from date of receipt.

For more information on our 100% guarantee, please visit [www.novusbio.com/guarantee](http://www.novusbio.com/guarantee)

Earn gift cards/discounts by submitting a review: [www.novusbio.com/reviews/submit/NB100-75623](http://www.novusbio.com/reviews/submit/NB100-75623)

Earn gift cards/discounts by submitting a publication using this product:  
[www.novusbio.com/publications](http://www.novusbio.com/publications)

