

# Product Datasheet

## LSM1 Antibody - BSA Free NB100-75412

Unit Size: 0.05 mg

Store at 4C short term. Aliquot and store at -20C long term. Avoid freeze-thaw cycles.

[www.novusbio.com](http://www.novusbio.com)



[technical@novusbio.com](mailto:technical@novusbio.com)

Protocols, Publications, Related Products, Reviews, Research Tools and Images at:  
[www.novusbio.com/NB100-75412](http://www.novusbio.com/NB100-75412)

Updated 2/21/2025 v.20.1

Earn rewards for product  
reviews and publications.

Submit a publication at [www.novusbio.com/publications](http://www.novusbio.com/publications)

Submit a review at [www.novusbio.com/reviews/destination/NB100-75412](http://www.novusbio.com/reviews/destination/NB100-75412)



**NB100-75412**

LSM1 Antibody - BSA Free

**Product Information**

<b>Unit Size</b>	0.05 mg
<b>Concentration</b>	Please see the vial label for concentration. If unlisted please contact technical services.
<b>Storage</b>	Store at 4C short term. Aliquot and store at -20C long term. Avoid freeze-thaw cycles.
<b>Clonality</b>	Polyclonal
<b>Preservative</b>	0.02% Sodium Azide
<b>Purity</b>	Immunogen affinity purified
<b>Buffer</b>	PBS (pH 7.2)

**Product Description**

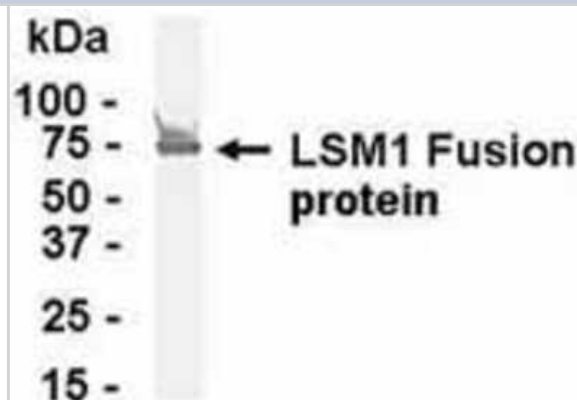
<b>Host</b>	Chicken
<b>Gene ID</b>	27257
<b>Gene Symbol</b>	LSM1
<b>Species</b>	Human, Mouse, Rat
<b>Reactivity Notes</b>	This antibody is reactive against Human, mouse, rat.
<b>Specificity/Sensitivity</b>	LSM1
<b>Immunogen</b>	The immunogen for this antibody was a sequence from 1a.a. to 133a.a. from LSM1(a 133a.a. long protein)
<b>Notes</b>	Chicken products cannot be exported to Canada.

**Product Application Details**

<b>Applications</b>	Western Blot
<b>Recommended Dilutions</b>	Western Blot 1:200 - 1:500
<b>Application Notes</b>	Western Blot: E coli-derived fusion protein as test antigen. Affinity-purified IgY dilution: 1:2000. Goat anti-IgY-HRP dilution: 1:1000. Colorimetric method for signal development.

**Images**

Western Blot: E coli-derived fusion protein as test antigen. Affinity-purified IgY dilution: 1:2000, Goat anti-IgY-HRP dilution: 1:1000. Colorimetric method for signal development. ( anti-LSM1 )





### **Novus Biologicals USA**

10730 E. Briarwood Avenue  
Centennial, CO 80112  
USA  
Phone: 303.730.1950  
Toll Free: 1.888.506.6887  
Fax: 303.730.1966  
nb-customerservice@bio-techne.com

### **Bio-Techne Canada**

21 Canmotor Ave  
Toronto, ON M8Z 4E6  
Canada  
Phone: 905.827.6400  
Toll Free: 855.668.8722  
Fax: 905.827.6402  
canada.inquires@bio-techne.com

### **Bio-Techne Ltd**

19 Barton Lane  
Abingdon Science Park  
Abingdon, OX14 3NB, United Kingdom  
Phone: (44) (0) 1235 529449  
Free Phone: 0800 37 34 15  
Fax: (44) (0) 1235 533420  
info.EMEA@bio-techne.com

### **General Contact Information**

www.novusbio.com  
Technical Support: nb-technical@bio-techne.com  
Orders: nb-customerservice@bio-techne.com  
General: novus@novusbio.com

### **Products Related to NB100-75412**

NBL1-12720	LSM1 Overexpression Lysate
BAF010	Goat anti-Chicken IgY Secondary Antibody [Biotin]
NB7276	Goat anti-Chicken IgM Heavy Chain Secondary Antibody
NBP1-49169-0.1mg	Recombinant Human LSM1 His Protein

### **Limitations**

This product is for research use only and is not approved for use in humans or in clinical diagnosis. Primary Antibodies are guaranteed for 1 year from date of receipt.

For more information on our 100% guarantee, please visit [www.novusbio.com/guarantee](http://www.novusbio.com/guarantee)

Earn gift cards/discounts by submitting a review: [www.novusbio.com/reviews/submit/NB100-75412](http://www.novusbio.com/reviews/submit/NB100-75412)

Earn gift cards/discounts by submitting a publication using this product:  
[www.novusbio.com/publications](http://www.novusbio.com/publications)

