

Product Datasheet

Lamin A + C Antibody (mab636) NB100-74451

Unit Size: 200uL

Store at -20C. Avoid freeze-thaw cycles.

www.novusbio.com



technical@novusbio.com

Publications: 6

Protocols, Publications, Related Products, Reviews, Research Tools and Images at:
www.novusbio.com/NB100-74451

Updated 10/23/2024 v.20.1

Earn rewards for product
reviews and publications.

Submit a publication at www.novusbio.com/publications

Submit a review at www.novusbio.com/reviews/destination/NB100-74451



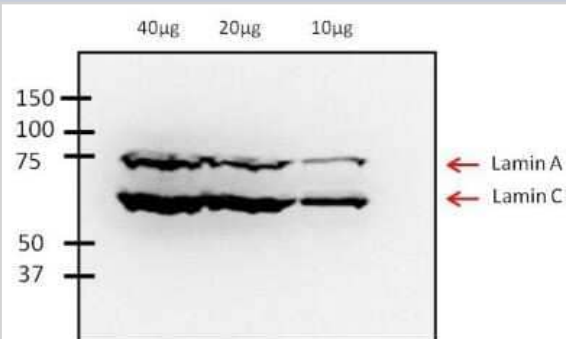
NB100-74451

Lamin A + C Antibody (mab636)

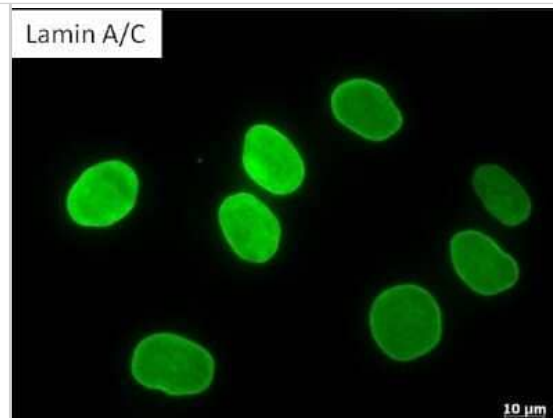
Product Information	
Unit Size	200uL
Concentration	This product is unpurified. The exact concentration of antibody is not quantifiable.
Storage	Store at -20C. Avoid freeze-thaw cycles.
Clonality	Monoclonal
Clone	mab636
Preservative	0.05% Sodium Azide
Isotype	IgG2b
Purity	Unpurified
Buffer	Tissue culture supernatant
Product Description	
Host	Mouse
Gene ID	4000
Gene Symbol	LMNA
Species	Human, Mouse, Rat, Porcine, Bovine
Reactivity Notes	Rat reactivity reported in scientific literature (PMID: 2209722). Mouse reactivity reported in scientific literature (PMID: 11373684).
Marker	Nuclear Envelope Marker
Specificity/Sensitivity	Detects lamin A/C from human, bovine and porcine samples.
Immunogen	Porcine lamin preparation.
Product Application Details	
Applications	Western Blot, Immunocytochemistry/ Immunofluorescence, Immunohistochemistry, Immunohistochemistry-Frozen
Recommended Dilutions	Western Blot 1:100 - 1:2000, Immunohistochemistry 1:100, Immunocytochemistry/ Immunofluorescence 1:100, Immunohistochemistry-Frozen 1:100
Application Notes	WB: Detects an approx. 70 and 65 kDa proteins corresponding to lamin A and C, respectively, from HeLa cell extract.

Images

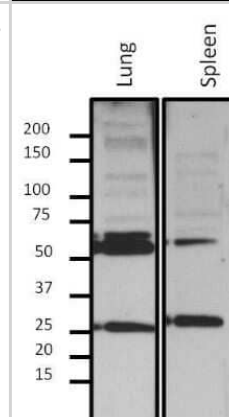
Western Blot: Lamin A + C Antibody (mab636) [NB100-74451] - Analysis of various amounts of Human fibroblast whole cell lysate.



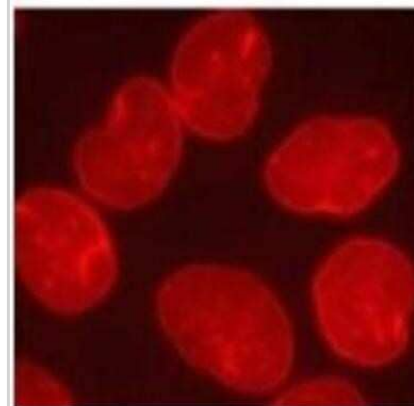
Immunocytochemistry/Immunofluorescence: Lamin A + C Antibody (mab636) [NB100-74451] - Analysis of Lamin A/C (green) in Human fibroblast cells. Methanol fixed cells were permeabilized with 0.1% Triton X-100 in TBS for 10 minutes at room temperature. Cells were then blocked with 5% normal goat serum for 15 minutes at room temperature. Cells were then probed with a mouse monoclonal antibody recognizing Lamin A/C, at a dilution of 1:200 for at least 1 hour at room temperature. Cells were then washed with PBS and incubated with DyLight 488 goat anti-mouse secondary antibody at a dilution of 1:400 for 30 minutes at room temperature.



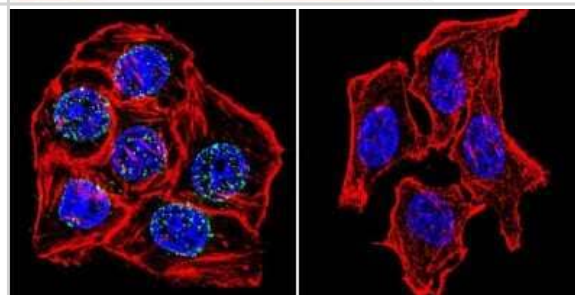
Western Blot: Lamin A + C Antibody (mab636) [NB100-74451] - Analysis of 10ug nuclear extract from fractionated mouse tissue lysate.



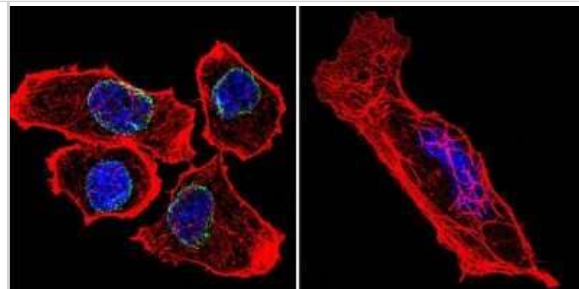
Immunocytochemistry/Immunofluorescence: Lamin A + C Antibody (mab636) [NB100-74451] - Analysis of Lamin A/C (red) in HeLa cells at high magnification.



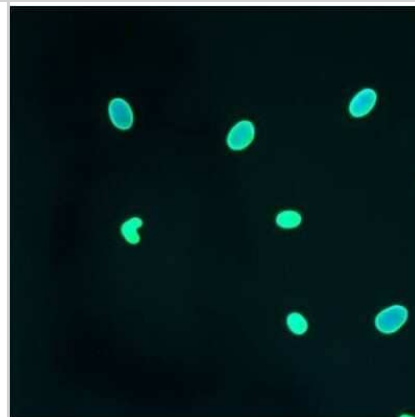
Immunocytochemistry/Immunofluorescence: Lamin A + C Antibody (mab636) [NB100-74451] - Analysis of Lamin A/C using Lamin A/C Monoclonal Antibody (mab636) shows staining in Hela Cells. Lamin A/C (green), F-Actin staining with Phalloidin (red) and nuclei with DAPI (blue) is shown. Cells were grown on chamber slides and fixed with formaldehyde prior to staining. Cells were probed without (control) or with an antibody recognizing Lamin A/C at a dilution of 1:20 over night at 4C, washed with PBS and incubated with a DyLight-488 conjugated.



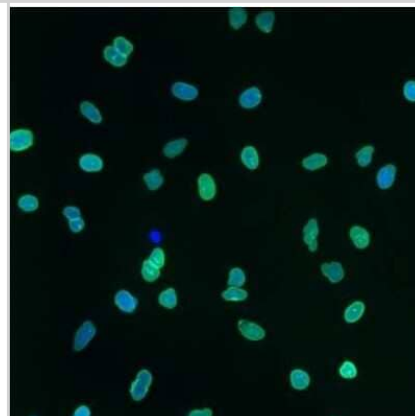
Immunocytochemistry/Immunofluorescence: Lamin A + C Antibody (mab636) [NB100-74451] - Analysis of Lamin A/C using Lamin A/C Monoclonal Antibody (mab636) shows staining in U251 Cells. Lamin A/C (green), F-Actin staining with Phalloidin (red) and nuclei with DAPI (blue) is shown. Cells were grown on chamber slides and fixed with formaldehyde prior to staining. Cells were probed without (control) or with an antibody recognizing Lamin A/C at a dilution of 1:200 over night at 4C, washed with PBS and incubated with a DyLight-488 conjugated.



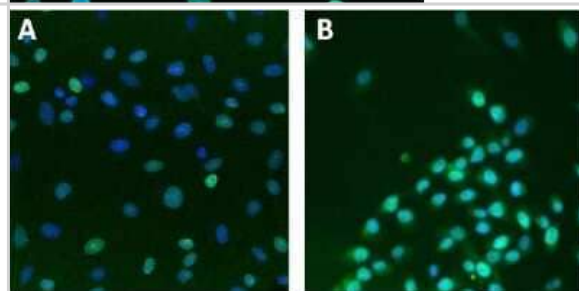
Immunocytochemistry/Immunofluorescence: Lamin A + C Antibody (mab636) [NB100-74451] - Analysis of Lamin A/C in HMVEC Cells.



Immunocytochemistry/Immunofluorescence: Lamin A + C Antibody (mab636) [NB100-74451] - Analysis of Lamin A/C in A549 Cells.



Immunocytochemistry/Immunofluorescence: Lamin A + C Antibody (mab636) [NB100-74451] - Analysis of Lamin A/C (green) in untreated U2-OS cells (A) or HeLa cells (B). Formalin fixed cells were permeabilized with 0.1% Triton X-100 in TBS for 10 minutes at room temperature. Cells were then blocked with 0.3% BSA for 15 minutes at room temperature. Cells were then probed with a mouse monoclonal antibody recognizing Lamin A/C, at a dilution of 1:100 for at least 1 hour at room temperature. Cells were then washed with PBS and incubated with DyLight 488 goat-anti-mouse secondary antibody at a dilution of 1:400 for 30 minutes at room temperature. Nuclei (blue) were stained with Hoechst 33342 dye.



Publications

Chen G, Gao X, Chen J et al. Actomyosin Activity and Piezo1 Activity Synergistically Drive Urinary System Fibroblast Activation *Advanced science* (Weinheim, Baden-Wurttemberg, Germany) 2023-10-22 [PMID: 37867255] (WB, ICC/IF, Human)

Geng J, Kang Z, Sun Q et al. Microtubule Assists Actomyosin to Regulate Cell Nuclear Mechanics and Chromatin Accessibility *Research* (Wash D C) 2023-02-21 [PMID: 37040508]

Su S, Qiu Y, Shi X et al. Phase Separation Microparticles as a Three-Dimensional Cell Culture System To Promote Stem Cell Expansion *Biomacromolecules* 2023-04-19 [PMID: 37073825]

Sun Q, Pei F, Zhang M et al. Curved Nanofiber Network Induces Cellular Bridge Formation to Promote Stem Cell Mechanotransduction *Advanced science* (Weinheim, Baden-Wurttemberg, Germany) 2022-11-16 [PMID: 36382560] (ICC/IF, Human)

Details:

Dilution used in ICC 1:200

Zhang M, Sun Q, Liu Y et al. Controllable ligand spacing stimulates cellular mechanotransduction and promotes stem cell osteogenic differentiation on soft hydrogels *Biomaterials* 2020-11-23 [PMID: 33260094] (ICC/IF, Human)

Details:

Human mesenchymal stem cells underwent immunofluorescence analysis after seeding into soft hydrogel.

Hadden WJ, Young JL, Holle AW et al. Stem cell migration and mechanotransduction on linear stiffness gradient hydrogels. *Proc. Natl. Acad. Sci. U.S.A.* 2017-05-15 [PMID: 28507138] (ICC/IF)





Novus Biologicals USA

10730 E. Briarwood Avenue
Centennial, CO 80112
USA
Phone: 303.730.1950
Toll Free: 1.888.506.6887
Fax: 303.730.1966
nb-customerservice@bio-techne.com

Bio-Techne Canada

21 Canmotor Ave
Toronto, ON M8Z 4E6
Canada
Phone: 905.827.6400
Toll Free: 855.668.8722
Fax: 905.827.6402
canada.inquires@bio-techne.com

Bio-Techne Ltd

19 Barton Lane
Abingdon Science Park
Abingdon, OX14 3NB, United Kingdom
Phone: (44) (0) 1235 529449
Free Phone: 0800 37 34 15
Fax: (44) (0) 1235 533420
info.EMEA@bio-techne.com

General Contact Information

www.novusbio.com
Technical Support: nb-technical@bio-techne.com
Orders: nb-customerservice@bio-techne.com
General: novus@novusbio.com

Products Related to NB100-74451

HAF007	Goat anti-Mouse IgG Secondary Antibody [HRP]
NB720-B	Rabbit anti-Mouse IgG (H+L) Secondary Antibody [Biotin]
NBP2-27231	Mouse IgG2b Isotype Control (MPC-11)
H00004000-P01-2ug	Recombinant Human Lamin A + C GST (N-Term) Protein

Limitations

This product is for research use only and is not approved for use in humans or in clinical diagnosis. Primary Antibodies are guaranteed for 1 year from date of receipt.

For more information on our 100% guarantee, please visit www.novusbio.com/guarantee

Earn gift cards/discounts by submitting a review: www.novusbio.com/reviews/submit/NB100-74451

Earn gift cards/discounts by submitting a publication using this product:
www.novusbio.com/publications

