

Product Datasheet

CREB Antibody (LB9) NB100-74393

Unit Size: 100 ug

Store at -20C. Avoid freeze-thaw cycles.

www.novusbio.com



technical@novusbio.com

Publications: 3

Protocols, Publications, Related Products, Reviews, Research Tools and Images at:
www.novusbio.com/NB100-74393

Updated 10/23/2024 v.20.1

Earn rewards for product
reviews and publications.

Submit a publication at www.novusbio.com/publications

Submit a review at www.novusbio.com/reviews/destination/NB100-74393



NB100-74393

CREB Antibody (LB9)

Product Information

Unit Size	100 ug
Concentration	1 mg/ml
Storage	Store at -20C. Avoid freeze-thaw cycles.
Clonality	Monoclonal
Clone	LB9
Preservative	0.05% Sodium Azide
Isotype	IgG1
Purity	Protein A purified
Buffer	PBS with 1 mg/ml BSA

Product Description

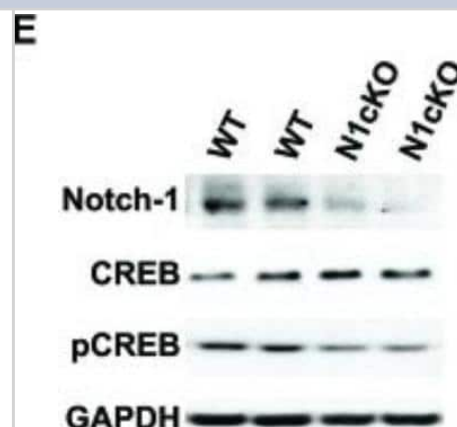
Host	Mouse
Gene ID	1385
Gene Symbol	CREB1
Species	Human, Mouse, Rat, Monkey, Primate
Reactivity Notes	Please note that this antibody is reactive to Mouse and derived from the same host, Mouse. Additional Mouse on Mouse blocking steps may be required for IHC and ICC experiments. Please contact Technical Support for more information.
Specificity/Sensitivity	CREB (LB9)
Immunogen	Recombinant human CREB-A protein.

Product Application Details

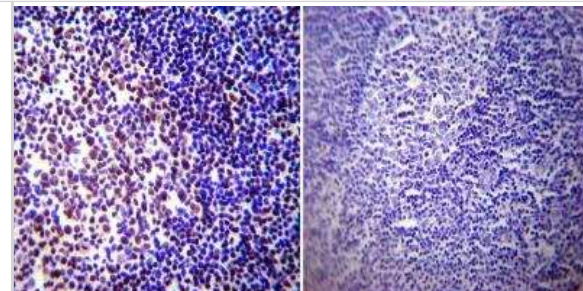
Applications	Western Blot, ELISA, Immunocytochemistry/ Immunofluorescence, Immunohistochemistry, Immunohistochemistry-Paraffin, Immunoprecipitation, Chromatin Immunoprecipitation (ChIP)
Recommended Dilutions	Western Blot 1-5 ug/ml, ELISA 0.1 - 1.0 ug/mL, Immunohistochemistry 1:10-1:500, Immunocytochemistry/ Immunofluorescence 1:500, Immunoprecipitation 2 ug, Immunohistochemistry-Paraffin 1:200, Chromatin Immunoprecipitation (ChIP)
Application Notes	WB: Detects an approx. 43 kDa protein.

Images

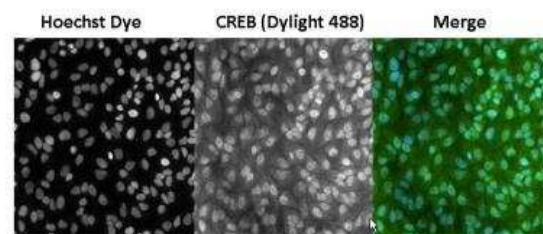
Western Blot: CREB Antibody (LB9) [NB100-74393] - Notch1 affects CREB phosphorylation and transcription. Immunoblot on whole hippocampal lysates shows a reduction in CREB phosphorylation in N1cKO as compared to WT (n = 3 independent experiments). Image collected and cropped by CiteAb from the following publication (www.journal.frontiersin.org/Article/10.3389/fncel.2015.00447/abstract) licensed under a CC-BY license.



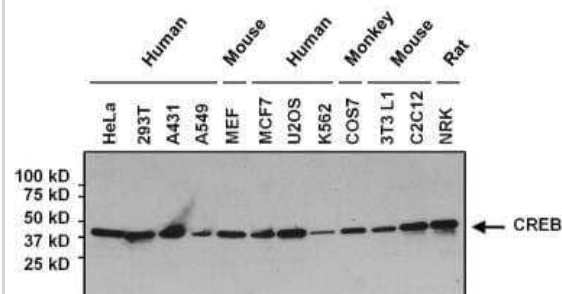
Immunohistochemistry-Paraffin: CREB Antibody (LB9) [NB100-74393] - Normal biopsies of deparaffinized Human tonsil tissue.



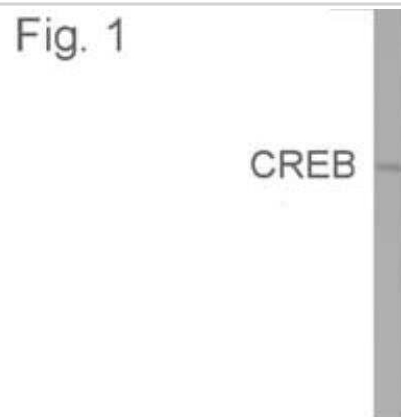
Chromatin Immunoprecipitation: CREB Antibody (LB9) [NB100-74393] - Staining of CREB (green) in untreated HeLa cells. Formalin fixed cells were permeabilized with 0.1% Triton X-100 in TBS for 15 minutes at room temperature. Cells were then blocked with 5% normal goat serum for 15 minutes at room temperature. Cells were probed with a mouse monoclonal antibody recognizing CREB at a dilution of 1:400 for at least 1 hour at room temperature. Cells were washed with PBS and incubated with DyLight 488 goat-anti-mouse secondary antibody at a dilution of 1:400 for 30 minutes at room temperature. Nuclei were stained with Hoechst 33342 dye.



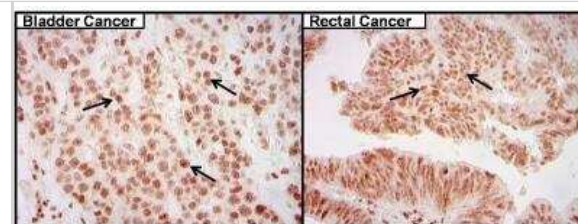
Western Blot: CREB Antibody (LB9) [NB100-74393] - Proteins were transferred to a PVDF membrane and blocked with 5% Milk/TBST for at least 1 hour. Membranes were probed with a mouse monoclonal antibody recognizing CREB at a dilution of 1:500 overnight at 4C on a rocking platform. Membranes were washed in TBS-0.1%Tween 20 and probed with a goat anti-mouse-HRP secondary antibody at a dilution of 1:20,000 for at least one hour. Membranes were washed and chemiluminescent detection performed.



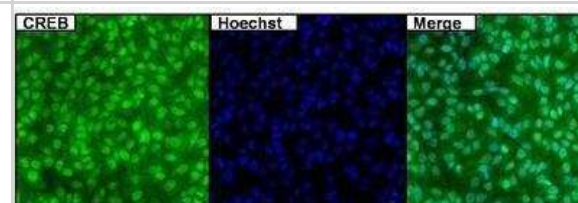
Western Blot: CREB Antibody (LB9) [NB100-74393] - Analysis of HepG2 cells



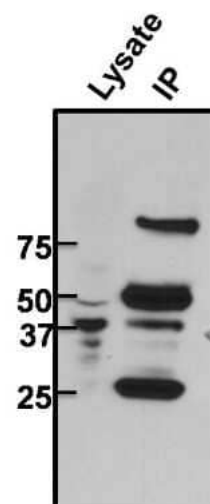
Immunohistochemistry-Paraffin: CREB Antibody (LB9) [NB100-74393] -
Cancer biopsies of deparaffinized human bladder and rectal tissue.



Chromatin Immunoprecipitation: CREB Antibody (LB9) [NB100-74393] -
Analysis of CREB (green) in untreated HeLa cells. Formalin fixed cells were permeabilized with 0.1% Triton X-100 in TBS for 15 minutes at room temperature. Cells were then blocked with 5% normal goat serum for 15 minutes at room temperature. Cells were probed with a mouse monoclonal antibody recognizing CREB at a dilution of 1:500 for at least 1 hour at room temperature. Cells were washed with PBS and incubated with DyLight 488 goat-anti-mouse secondary antibody at a dilution of 1:400 for 30 minutes at room temperature. Nuclei were stained with Hoechst 33342 dye. Images were taken on a Thermo Scientific ArrayScan at 20X magnification.



Immunoprecipitation: CREB Antibody (LB9) [NB100-74393] - Analysis of CREB was performed on untreated 293T cells. Antigen: antibody complex was formed by binding 500ug whole cell lysate with 2ug of mouse monoclonal antibody recognizing CREB overnight on a rocking platform at 4C. The immune-complex was then captured on 50ul Protein A/G Plus Agarose. Captured immune-complexes were then washed extensively and proteins eluted with 5X Reducing Sample Loading Dye. Samples were then resolved on a 4-20% Tris-HCl polyacrylamide gel. Proteins were transferred to PVDF membrane and blocked with 5% Milk/TBS-0.1%Tween for at least 1 hour. Membranes were then probed with a mouse monoclonal antibody recognizing CREB at a dilution of 1:1000 overnight rotating at 4C. Membranes were then washed in TBST and probed with a goat anti-mouse-HRP secondary antibody at a dilution of 1:20,000 for at least one hour. Membranes were washed and chemiluminescent detection was performed using Super Signal West Dura.



Publications

Yardim A, Gur C, Comakli S et al. Investigation of the effects of berberine on bortezomib-induced sciatic nerve and spinal cord damage in rats through pathways involved in oxidative stress and neuro-inflammation *NeuroToxicology* 2022-02-01 [PMID: 35121005] (IHC-P, Rat)

Yardim A, Kucukler S, Ozdemir S et al. Silymarin alleviates docetaxel-induced central and peripheral neurotoxicity by reducing oxidative stress, inflammation and apoptosis in rats *Gene* 2020-10-15 [PMID: 33069805] (IF/IHC, Rat)

Brai E, Marathe S, Astori S et al. Notch1 Regulates Hippocampal Plasticity Through Interaction with the Reelin Pathway, Glutamatergic Transmission and CREB Signaling. *Front Cell Neurosci.* 2015-12-04 [PMID: 26635527] (WB, Mouse)



Novus Biologicals USA

10730 E. Briarwood Avenue
Centennial, CO 80112
USA
Phone: 303.730.1950
Toll Free: 1.888.506.6887
Fax: 303.730.1966
nb-customerservice@bio-techne.com

Bio-Techne Canada

21 Canmotor Ave
Toronto, ON M8Z 4E6
Canada
Phone: 905.827.6400
Toll Free: 855.668.8722
Fax: 905.827.6402
canada.inquires@bio-techne.com

Bio-Techne Ltd

19 Barton Lane
Abingdon Science Park
Abingdon, OX14 3NB, United Kingdom
Phone: (44) (0) 1235 529449
Free Phone: 0800 37 34 15
Fax: (44) (0) 1235 533420
info.EMEA@bio-techne.com

General Contact Information

www.novusbio.com
Technical Support: nb-technical@bio-techne.com
Orders: nb-customerservice@bio-techne.com
General: novus@novusbio.com

Products Related to NB100-74393

HAF007	Goat anti-Mouse IgG Secondary Antibody [HRP]
NB720-B	Rabbit anti-Mouse IgG (H+L) Secondary Antibody [Biotin]
NBP1-97005-0.5mg	Mouse IgG1 Isotype Control (MG1)
H00001385-P01-10ug	Recombinant Human CREB GST (N-Term) Protein

Limitations

This product is for research use only and is not approved for use in humans or in clinical diagnosis. Primary Antibodies are guaranteed for 1 year from date of receipt.

For more information on our 100% guarantee, please visit www.novusbio.com/guarantee

Earn gift cards/discounts by submitting a review: www.novusbio.com/reviews/submit/NB100-74393

Earn gift cards/discounts by submitting a publication using this product:
www.novusbio.com/publications

