

# Product Datasheet

## LYVE-1 Antibody [DyLight 488] NB100-725G

Unit Size: 0.1 ml

Store at 4C in the dark.

[www.novusbio.com](http://www.novusbio.com)



[technical@novusbio.com](mailto:technical@novusbio.com)

**Reviews: 2**

Protocols, Publications, Related Products, Reviews, Research Tools and Images at:  
[www.novusbio.com/NB100-725G](http://www.novusbio.com/NB100-725G)

Updated 10/23/2024 v.20.1

**Earn rewards for product  
reviews and publications.**

Submit a publication at [www.novusbio.com/publications](http://www.novusbio.com/publications)

Submit a review at [www.novusbio.com/reviews/destination/NB100-725G](http://www.novusbio.com/reviews/destination/NB100-725G)



**NB100-725G**

LYVE-1 Antibody [DyLight 488]

Product Information	
<b>Unit Size</b>	0.1 ml
<b>Concentration</b>	Please see the vial label for concentration. If unlisted please contact technical services.
<b>Storage</b>	Store at 4C in the dark.
<b>Clonality</b>	Polyclonal
<b>Preservative</b>	0.05% Sodium Azide
<b>Isotype</b>	IgG
<b>Conjugate</b>	DyLight 488
<b>Purity</b>	Immunogen affinity purified
<b>Buffer</b>	50mM Sodium Borate
<b>Target Molecular Weight</b>	35 kDa

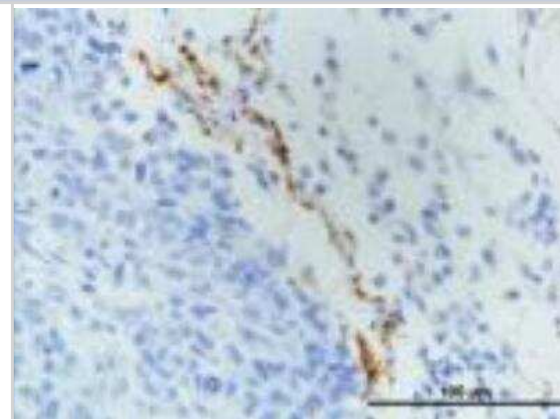
Product Description	
<b>Host</b>	Rabbit
<b>Gene ID</b>	10894
<b>Gene Symbol</b>	LYVE1
<b>Species</b>	Human, Mouse, Rat
<b>Marker</b>	Lymphatic Vessel Marker
<b>Immunogen</b>	This LYVE-1 Antibody was developed against a synthetic peptide made to a C-terminal portion of the mouse LYVE1 protein sequence (between residues 250-318). [UniProt# Q8BHC0]
<b>Notes</b>	DyLight (R) is a trademark of Thermo Fisher Scientific Inc. and its subsidiaries.

Product Application Details	
<b>Applications</b>	Western Blot, Flow Cytometry, Flow (Intracellular), Immunohistochemistry, Immunohistochemistry-Frozen, Immunohistochemistry-Paraffin
<b>Recommended Dilutions</b>	Western Blot, Flow Cytometry, Immunohistochemistry, Immunohistochemistry-Paraffin, Immunohistochemistry-Frozen, Flow (Intracellular)
<b>Application Notes</b>	Optimal dilution of this antibody should be experimentally determined.

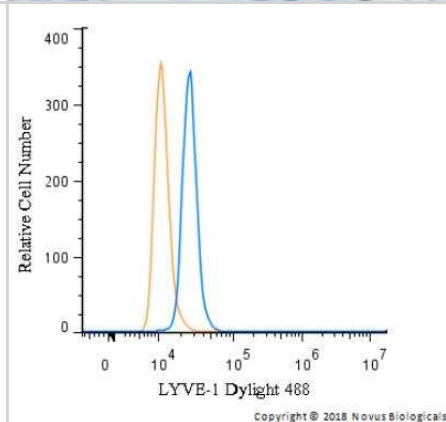


## Images

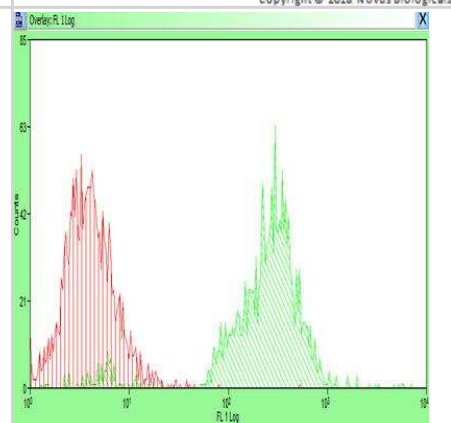
Immunohistochemistry-Paraffin: LYVE1 Antibody [DyLight 488] [NB100-725G] - IHC analysis of LYVE1 in paraffin embedded MDA-MB-231 breast cancer orthotopic transplantation tissue. Image courtesy of product review submitted by Luana Schito.



Flow Cytometry: LYVE-1 Antibody [DyLight 488] [NB100-725G] - An intracellular stain was performed on A549 cells with LYVE-1 Antibody NB100-725G (blue) and a matched isotype control (orange). Cells were fixed with 4% PFA and then permeabilized with 0.1% saponin. Cells were incubated in an antibody dilution of 10 ug/mL for 30 minutes at room temperature. Both antibodies were conjugated to DyLight 488



Flow Cytometry: LYVE1 Antibody [DyLight 488] [NB100-725G] - Unlabeled control with labeled samples of cells dissociated mechanically and enzymatically from human skin. Image provided via product review by Patricia Redondo.





### **Novus Biologicals USA**

10730 E. Briarwood Avenue  
Centennial, CO 80112  
USA  
Phone: 303.730.1950  
Toll Free: 1.888.506.6887  
Fax: 303.730.1966  
nb-customerservice@bio-techne.com

### **Bio-Techne Canada**

21 Canmotor Ave  
Toronto, ON M8Z 4E6  
Canada  
Phone: 905.827.6400  
Toll Free: 855.668.8722  
Fax: 905.827.6402  
canada.inquires@bio-techne.com

### **Bio-Techne Ltd**

19 Barton Lane  
Abingdon Science Park  
Abingdon, OX14 3NB, United Kingdom  
Phone: (44) (0) 1235 529449  
Free Phone: 0800 37 34 15  
Fax: (44) (0) 1235 533420  
info.EMEA@bio-techne.com

### **General Contact Information**

www.novusbio.com  
Technical Support: nb-technical@bio-techne.com  
Orders: nb-customerservice@bio-techne.com  
General: novus@novusbio.com

### **Products Related to NB100-725G**

---

NBP2-24891G	Rabbit IgG Isotype Control [DyLight 488]
NB100-725PEP	LYVE-1 Antibody Blocking Peptide
210-TA-005	TNF-alpha [Unconjugated]
NB100-939-1Pack	LYVE-1 Antibody Pack

---

### **Limitations**

This product is for research use only and is not approved for use in humans or in clinical diagnosis. Primary Antibodies are guaranteed for 1 year from date of receipt.

For more information on our 100% guarantee, please visit [www.novusbio.com/guarantee](http://www.novusbio.com/guarantee)

Earn gift cards/discounts by submitting a review: [www.novusbio.com/reviews/submit/NB100-725G](http://www.novusbio.com/reviews/submit/NB100-725G)

Earn gift cards/discounts by submitting a publication using this product:  
[www.novusbio.com/publications](http://www.novusbio.com/publications)

