

Product Datasheet

Chymase/CMA1/Mast Cell Chymase Antibody (CC1) NB100-693

Unit Size: 0.5 ml

Store at 4C. Do not freeze.

www.novusbio.com



technical@novusbio.com

Publications: 2

Protocols, Publications, Related Products, Reviews, Research Tools and Images at:
www.novusbio.com/NB100-693

Updated 10/23/2024 v.20.1

Earn rewards for product
reviews and publications.

Submit a publication at www.novusbio.com/publications

Submit a review at www.novusbio.com/reviews/destination/NB100-693



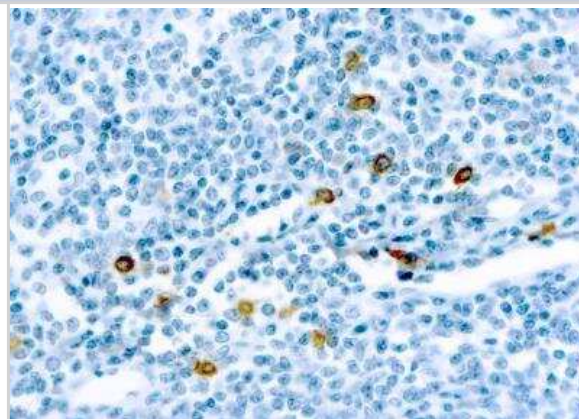
NB100-693**Chymase/CMA1/Mast Cell Chymase Antibody (CC1)**

Product Information	
Unit Size	0.5 ml
Concentration	Please see the vial label for concentration. If unlisted please contact technical services.
Storage	Store at 4C. Do not freeze.
Clonality	Monoclonal
Clone	CC1
Preservative	0.05% Sodium Azide
Isotype	IgG1
Purity	Protein A or G purified
Buffer	PBS (pH 7.4), 0.2% BSA, Tween-20
Product Description	
Host	Mouse
Gene ID	1215
Gene Symbol	CMA1
Species	Human
Specificity/Sensitivity	This reacts with mast cells distributed in skin, synovium, lung and heart.
Immunogen	BALB/C mice were injected with a purified human skin chymase.
Product Application Details	
Applications	Immunohistochemistry, Immunohistochemistry-Paraffin
Recommended Dilutions	Immunohistochemistry 1:50-1:100, Immunohistochemistry-Paraffin 1:50-1:100
Application Notes	IHC-P: recommended pretreatment of citrate buffer, pH 6.0. Recommended incubation time of 30 min at RT.

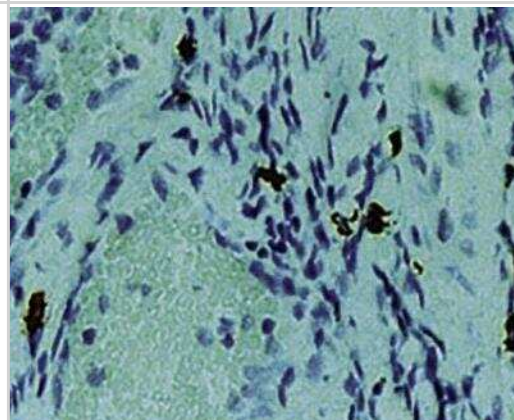


Images

Immunohistochemistry: Chymase/CMA1/Mast Cell Chymase Antibody (CC1) [NB100-693] - Staining of a human tonsil cross section



Immunohistochemistry-Paraffin: Chymase/CMA1/Mast Cell Chymase Antibody (CC1) [NB100-693] - Formalin fixed paraffin embedded human tonsil stained with Mast Cell Chymase antibody.



Publications

Kallionpaa Ra, Ahramo K, Martikkala E Et Al. Mast Cells in Human Cutaneous Neurofibromas: Density, Subtypes, and Association with Clinical Features in Neurofibromatosis 1 Dermatology (Basel, Switzerland) 2021-07-08 [PMID: 34237737] (IF/IHC)

Hsieh, FH et al. Human airway epithelial cell determinants of survival functional phenotype for primary human mast cells. PNAS. 102:14380-14385. 2005-01-01 [PMID: 16186496]



Novus Biologicals USA

10730 E. Briarwood Avenue
Centennial, CO 80112
USA
Phone: 303.730.1950
Toll Free: 1.888.506.6887
Fax: 303.730.1966
nb-customerservice@bio-techne.com

Bio-Techne Canada

21 Canmotor Ave
Toronto, ON M8Z 4E6
Canada
Phone: 905.827.6400
Toll Free: 855.668.8722
Fax: 905.827.6402
canada.inquires@bio-techne.com

Bio-Techne Ltd

19 Barton Lane
Abingdon Science Park
Abingdon, OX14 3NB, United Kingdom
Phone: (44) (0) 1235 529449
Free Phone: 0800 37 34 15
Fax: (44) (0) 1235 533420
info.EMEA@bio-techne.com

General Contact Information

www.novusbio.com
Technical Support: nb-technical@bio-techne.com
Orders: nb-customerservice@bio-techne.com
General: novus@novusbio.com

Products Related to NB100-693

NBL1-09293	Chymase/CMA1/Mast Cell Chymase Overexpression Lysate
HAF007	Goat anti-Mouse IgG Secondary Antibody [HRP]
NB720-B	Rabbit anti-Mouse IgG (H+L) Secondary Antibody [Biotin]
NBP1-97005-0.5mg	Mouse IgG1 Isotype Control (MG1)

Limitations

This product is for research use only and is not approved for use in humans or in clinical diagnosis. Primary Antibodies are guaranteed for 1 year from date of receipt.

For more information on our 100% guarantee, please visit www.novusbio.com/guarantee

Earn gift cards/discounts by submitting a review: www.novusbio.com/reviews/submit/NB100-693

Earn gift cards/discounts by submitting a publication using this product:
www.novusbio.com/publications

