

# Product Datasheet

## alpha Tubulin Antibody (DM1A) [Janelia Fluor® 646] NB100-690JF646

Unit Size: 0.1 ml

Store at 4C in the dark.

[www.novusbio.com](http://www.novusbio.com)



[technical@novusbio.com](mailto:technical@novusbio.com)

Protocols, Publications, Related Products, Reviews, Research Tools and Images at:  
[www.novusbio.com/NB100-690JF646](http://www.novusbio.com/NB100-690JF646)

Updated 10/23/2024 v.20.1

Earn rewards for product  
reviews and publications.

Submit a publication at [www.novusbio.com/publications](http://www.novusbio.com/publications)

Submit a review at [www.novusbio.com/reviews/destination/NB100-690JF646](http://www.novusbio.com/reviews/destination/NB100-690JF646)



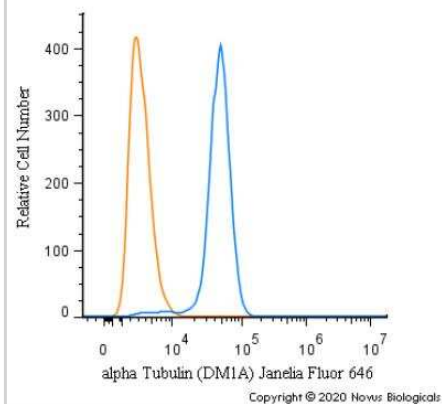
**NB100-690JF646**

alpha Tubulin Antibody (DM1A) [Janelia Fluor® 646]

<b>Product Information</b>	
<b>Unit Size</b>	0.1 ml
<b>Concentration</b>	Please see the vial label for concentration. If unlisted please contact technical services.
<b>Storage</b>	Store at 4C in the dark.
<b>Clonality</b>	Monoclonal
<b>Clone</b>	DM1A
<b>Preservative</b>	0.05% Sodium Azide
<b>Isotype</b>	IgG1 Kappa
<b>Conjugate</b>	Janelia Fluor 646
<b>Purity</b>	Protein G purified
<b>Buffer</b>	50mM Sodium Borate
<b>Product Description</b>	
<b>Host</b>	Mouse
<b>Gene ID</b>	7846
<b>Gene Symbol</b>	TUBA1A
<b>Species</b>	Human, Mouse, Rat, Porcine, Avian, Bovine, Canine, Chicken, Chinese Hamster, Drosophila, Fungi, Guinea Pig, Goat, Hamster, Parasite, Monkey, Primate, Rabbit, Xenopus, Yeast
<b>Reactivity Notes</b>	Use in Mouse reported in scientific literature (PMID:34871568) Use in Mouse reported in scientific literature (PMID:34533563). Yeast reactivity reported in scientific literature (PMID: 25126732). Goat reactivity reported in scientific literature (PMID:31805146). Will likely react with all mammals.
<b>Marker</b>	Microtubule Marker
<b>Specificity/Sensitivity</b>	This alpha Tubulin Antibody (DM1A) does not cross-react with beta Tubulin.
<b>Immunogen</b>	This alpha Tubulin Antibody (DM1A) was developed against native chicken brain microtubules.
<b>Notes</b>	Sold under license from the Howard Hughes Medical Institute, Janelia Research Campus.
<b>Product Application Details</b>	
<b>Applications</b>	Western Blot, Simple Western, Flow Cytometry, Flow (Intracellular), Immunocytochemistry/ Immunofluorescence, Immunohistochemistry, Immunohistochemistry-Frozen, Immunohistochemistry-Paraffin, Immunomicroscopy, Immunoprecipitation, CyTOF-ready
<b>Recommended Dilutions</b>	Western Blot, Simple Western, Flow Cytometry, Immunohistochemistry, Immunocytochemistry/ Immunofluorescence, Immunoprecipitation, Immunohistochemistry-Paraffin, Immunohistochemistry-Frozen, Immunomicroscopy, Flow (Intracellular), CyTOF-ready
<b>Application Notes</b>	Optimal dilution of this antibody should be experimentally determined.

## Images

Flow Cytometry: alpha Tubulin Antibody (DM1A) [Janelia Fluor® 646] [NB100-690JF646] - An intracellular stain was performed on HeLa cells with alpha Tubulin (DM1A) Antibody NB100-690JF646 (blue) and a matched isotype control (orange). Cells were fixed with 4% PFA and then permeabilized with 0.1% saponin. Cells were incubated in an antibody dilution of 2.5 ug/mL for 30 minutes at room temperature. Both antibodies were conjugated to Janelia Fluor 646.





### **Novus Biologicals USA**

10730 E. Briarwood Avenue  
Centennial, CO 80112  
USA  
Phone: 303.730.1950  
Toll Free: 1.888.506.6887  
Fax: 303.730.1966  
nb-customerservice@bio-techne.com

### **Bio-Techne Canada**

21 Canmotor Ave  
Toronto, ON M8Z 4E6  
Canada  
Phone: 905.827.6400  
Toll Free: 855.668.8722  
Fax: 905.827.6402  
canada.inquires@bio-techne.com

### **Bio-Techne Ltd**

19 Barton Lane  
Abingdon Science Park  
Abingdon, OX14 3NB, United Kingdom  
Phone: (44) (0) 1235 529449  
Free Phone: 0800 37 34 15  
Fax: (44) (0) 1235 533420  
info.EMEA@bio-techne.com

### **General Contact Information**

www.novusbio.com  
Technical Support: nb-technical@bio-techne.com  
Orders: nb-customerservice@bio-techne.com  
General: novus@novusbio.com

### **Products Related to NB100-690JF646**

---

H00007846-Q01-10ug	Recombinant Human alpha Tubulin GST (N-Term) Protein
DPLG70	PLA2G7/PAF-AH/Lp-PLA2 [HRP]
NBL1-17427	alpha Tubulin Overexpression Lysate
NB600-501	beta-Actin Antibody (AC-15)

---

### **Limitations**

This product is for research use only and is not approved for use in humans or in clinical diagnosis. Primary Antibodies are guaranteed for 1 year from date of receipt.

For more information on our 100% guarantee, please visit [www.novusbio.com/guarantee](http://www.novusbio.com/guarantee)

Earn gift cards/discounts by submitting a review: [www.novusbio.com/reviews/submit/NB100-690JF646](http://www.novusbio.com/reviews/submit/NB100-690JF646)

Earn gift cards/discounts by submitting a publication using this product:  
[www.novusbio.com/publications](http://www.novusbio.com/publications)

