

Product Datasheet

alpha Tubulin Antibody (DM1A) [HRP] NB100-690H

Unit Size: 0.1 ml

Store at 4C in the dark.

www.novusbio.com



technical@novusbio.com

Reviews: 1 Publications: 2

Protocols, Publications, Related Products, Reviews, Research Tools and Images at:
www.novusbio.com/NB100-690H

Updated 10/23/2024 v.20.1

Earn rewards for product
reviews and publications.

Submit a publication at www.novusbio.com/publications

Submit a review at www.novusbio.com/reviews/destination/NB100-690H



NB100-690H

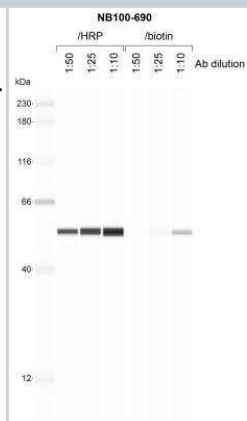
alpha Tubulin Antibody (DM1A) [HRP]

| Product Information | |
|-----------------------------|--|
| Unit Size | 0.1 ml |
| Concentration | Please see the vial label for concentration. If unlisted please contact technical services. |
| Storage | Store at 4C in the dark. |
| Clonality | Monoclonal |
| Clone | DM1A |
| Preservative | No Preservative |
| Isotype | IgG1 Kappa |
| Conjugate | HRP |
| Purity | Protein G purified |
| Buffer | PBS |
| Product Description | |
| Host | Mouse |
| Gene ID | 7846 |
| Gene Symbol | TUBA1A |
| Species | Human, Mouse, Rat, Porcine, Avian, Bovine, Canine, Chicken, Chinese Hamster, Drosophila, Fungi, Guinea Pig, Goat, Hamster, Parasite, Primate, Monkey, Rabbit, Xenopus, Yeast |
| Reactivity Notes | Use in Mouse reported in scientific literature (PMID:34871568) Use in Mouse reported in scientific literature (PMID:34533563). Yeast reactivity reported in scientific literature (PMID: 25126732). Goat reactivity reported in scientific literature (PMID:31805146). Will likely react with all mammals. |
| Marker | Microtubule Marker |
| Specificity/Sensitivity | This alpha Tubulin Antibody (DM1A) does not cross-react with beta Tubulin. |
| Immunogen | This alpha Tubulin Antibody (DM1A) was developed against native chicken brain microtubules. |
| Product Application Details | |
| Applications | Western Blot, Simple Western, Flow Cytometry, Flow (Intracellular), Immunocytochemistry/ Immunofluorescence, Immunohistochemistry, Immunohistochemistry-Frozen, Immunohistochemistry-Paraffin, Immunomicroscopy, Immunoprecipitation, CyTOF-ready |
| Recommended Dilutions | Western Blot, Simple Western, Flow Cytometry, Immunohistochemistry, Immunocytochemistry/ Immunofluorescence, Immunoprecipitation, Immunohistochemistry-Paraffin, Immunohistochemistry-Frozen, Immunomicroscopy, Flow (Intracellular), CyTOF-ready |
| Application Notes | Optimal dilution of this antibody should be experimentally determined. |



Images

Simple Western: alpha Tubulin Antibody (DM1A) [HRP] [NB100-690H] - 1 mg/mL human SVG-A whole cell lysate probed with the indicated concentration of each conjugated antibody. Image from verified customer review.



Publications

Kryczka J, Kryczka J, Janczewski L Et al. Isothiocyanates (ITCs) 1-(Isothiocyanatomethyl)-4-phenylbenzene and 1-Isothiocyanato-3,5-bis(trifluoromethyl)benzene-Aldehyde Dehydrogenase (ALDH) Inhibitors, Decreases Cisplatin Tolerance and Migratory Ability of NSCLC Int J Mol Sci 2022-08-12 [PMID: 35955773] (WB, Human)

Details:

Citation using the HRP version of this antibody.

Kryczka J, Sochacka E, Papiewska-Pajak I et al. Implications of ABCC4-Mediated cAMP Eflux for CRC Migration Cancers (Basel) 2020-12-02 [PMID: 33261018] (WB, Human)

Details:

Citation using the HRP version of this antibody.



Novus Biologicals USA

10730 E. Briarwood Avenue
Centennial, CO 80112
USA
Phone: 303.730.1950
Toll Free: 1.888.506.6887
Fax: 303.730.1966
nb-customerservice@bio-techne.com

Bio-Techne Canada

21 Canmotor Ave
Toronto, ON M8Z 4E6
Canada
Phone: 905.827.6400
Toll Free: 855.668.8722
Fax: 905.827.6402
canada.inquires@bio-techne.com

Bio-Techne Ltd

19 Barton Lane
Abingdon Science Park
Abingdon, OX14 3NB, United Kingdom
Phone: (44) (0) 1235 529449
Free Phone: 0800 37 34 15
Fax: (44) (0) 1235 533420
info.EMEA@bio-techne.com

General Contact Information

www.novusbio.com
Technical Support: nb-technical@bio-techne.com
Orders: nb-customerservice@bio-techne.com
General: novus@novusbio.com

Products Related to NB100-690H

| | |
|--------------------|--|
| NBP1-43319H-0.5ml | Mouse IgG1 Kappa Isotype Control (P3.6.2.8.1) [HRP] |
| NB100-690B | alpha Tubulin Antibody (DM1A) [Biotin] |
| H00007846-Q01-10ug | Recombinant Human alpha Tubulin GST (N-Term) Protein |
| DPLG70 | PLA2G7/PAF-AH/Lp-PLA2 [HRP] |

Limitations

This product is for research use only and is not approved for use in humans or in clinical diagnosis. Primary Antibodies are guaranteed for 1 year from date of receipt.

For more information on our 100% guarantee, please visit www.novusbio.com/guarantee

Earn gift cards/discounts by submitting a review: www.novusbio.com/reviews/submit/NB100-690H

Earn gift cards/discounts by submitting a publication using this product:
www.novusbio.com/publications

