

Product Datasheet

alpha Tubulin Antibody (DM1A) [Biotin] NB100-690B

Unit Size: 0.1 ml

Store at 4C in the dark.

www.novusbio.com



technical@novusbio.com

Reviews: 1

Protocols, Publications, Related Products, Reviews, Research Tools and Images at:
www.novusbio.com/NB100-690B

Updated 10/23/2024 v.20.1

Earn rewards for product
reviews and publications.

Submit a publication at www.novusbio.com/publications

Submit a review at www.novusbio.com/reviews/destination/NB100-690B



NB100-690B

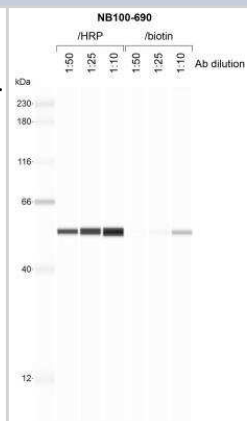
alpha Tubulin Antibody (DM1A) [Biotin]

Product Information	
Unit Size	0.1 ml
Concentration	Please see the vial label for concentration. If unlisted please contact technical services.
Storage	Store at 4C in the dark.
Clonality	Monoclonal
Clone	DM1A
Preservative	0.05% Sodium Azide
Isotype	IgG1 Kappa
Conjugate	Biotin
Purity	Protein G purified
Buffer	PBS
Product Description	
Host	Mouse
Gene ID	7846
Gene Symbol	TUBA1A
Species	Human, Mouse, Rat, Porcine, Avian, Bovine, Canine, Chicken, Chinese Hamster, Drosophila, Fungi, Guinea Pig, Goat, Hamster, Parasite, Primate, Monkey, Rabbit, Xenopus, Yeast
Reactivity Notes	Use in Mouse reported in scientific literature (PMID:34871568) Use in Mouse reported in scientific literature (PMID:34533563). Yeast reactivity reported in scientific literature (PMID: 25126732). Goat reactivity reported in scientific literature (PMID:31805146). Will likely react with all mammals.
Marker	Microtubule Marker
Specificity/Sensitivity	This alpha Tubulin Antibody (DM1A) does not cross-react with beta Tubulin.
Immunogen	This alpha Tubulin Antibody (DM1A) was developed against native chicken brain microtubules.
Product Application Details	
Applications	Western Blot, Simple Western, Flow Cytometry, Flow (Intracellular), Immunocytochemistry/ Immunofluorescence, Immunohistochemistry, Immunohistochemistry-Frozen, Immunohistochemistry-Paraffin, Immunomicroscopy, Immunoprecipitation, CyTOF-ready
Recommended Dilutions	Western Blot, Simple Western, Flow Cytometry, Immunohistochemistry, Immunocytochemistry/ Immunofluorescence, Immunoprecipitation, Immunohistochemistry-Paraffin, Immunohistochemistry-Frozen, Immunomicroscopy, Flow (Intracellular), CyTOF-ready
Application Notes	Optimal dilution of this antibody should be experimentally determined.



Images

Simple Western: alpha Tubulin Antibody (DM1A) [Biotin] [NB100-690B] - 1 mg/mL human SVG-A whole cell lysate probed with the indicated concentration of each conjugated antibody. Image from verified customer review.





Novus Biologicals USA

10730 E. Briarwood Avenue
Centennial, CO 80112
USA
Phone: 303.730.1950
Toll Free: 1.888.506.6887
Fax: 303.730.1966
nb-customerservice@bio-techne.com

Bio-Techne Canada

21 Canmotor Ave
Toronto, ON M8Z 4E6
Canada
Phone: 905.827.6400
Toll Free: 855.668.8722
Fax: 905.827.6402
canada.inquires@bio-techne.com

Bio-Techne Ltd

19 Barton Lane
Abingdon Science Park
Abingdon, OX14 3NB, United Kingdom
Phone: (44) (0) 1235 529449
Free Phone: 0800 37 34 15
Fax: (44) (0) 1235 533420
info.EMEA@bio-techne.com

General Contact Information

www.novusbio.com
Technical Support: nb-technical@bio-techne.com
Orders: nb-customerservice@bio-techne.com
General: novus@novusbio.com

Products Related to NB100-690B

NBP2-29370	Streptavidin Native Protein
IC002B	Mouse IgG1 Isotype Control (11711) [Biotin]
NB100-690H	alpha Tubulin Antibody (DM1A) [HRP]
H00007846-Q01-10ug	Recombinant Human alpha Tubulin GST (N-Term) Protein

Limitations

This product is for research use only and is not approved for use in humans or in clinical diagnosis. Primary Antibodies are guaranteed for 1 year from date of receipt.

For more information on our 100% guarantee, please visit www.novusbio.com/guarantee

Earn gift cards/discounts by submitting a review: www.novusbio.com/reviews/submit/NB100-690B

Earn gift cards/discounts by submitting a publication using this product:
www.novusbio.com/publications

