

Product Datasheet

CD68/SR-D1 Antibody (KP1) [PE] NB100-683PE

Unit Size: 0.1 ml

Store at 4C in the dark.

www.novusbio.com



technical@novusbio.com

Publications: 1

Protocols, Publications, Related Products, Reviews, Research Tools and Images at:
www.novusbio.com/NB100-683PE

Updated 10/23/2024 v.20.1

Earn rewards for product
reviews and publications.

Submit a publication at www.novusbio.com/publications

Submit a review at www.novusbio.com/reviews/destination/NB100-683PE



NB100-683PE

CD68/SR-D1 Antibody (KP1) [PE]

Product Information

Unit Size	0.1 ml
Concentration	Please see the vial label for concentration. If unlisted please contact technical services.
Storage	Store at 4C in the dark.
Clonality	Monoclonal
Clone	KP1
Preservative	0.05% Sodium Azide
Isotype	IgG1 Kappa
Conjugate	PE
Purity	Protein A or G purified
Buffer	PBS

Product Description

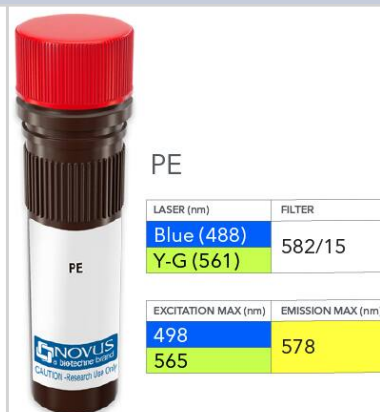
Host	Mouse
Gene ID	968
Gene Symbol	CD68
Species	Human, Mouse, Rat
Reactivity Notes	Rat reactivity reported in scientific literature (PMID: 25058444)
Specificity/Sensitivity	This CD68/SR-D1 Antibody (KP1) is specific to macrophages in a wide variety of human tissues. It reacts with myeloid precursors and peripheral blood granulocytes. It also stains a cell population known as Plasmacytoid T cells.
Immunogen	This CD68/SR-D1 Antibody (KP1) was developed against subcellular fraction of human alveolar macrophages.

Product Application Details

Applications	Western Blot, Electron Microscopy, Flow Cytometry, Immunocytochemistry/Immunofluorescence, Immunohistochemistry, Immunohistochemistry-Frozen, Immunohistochemistry-Paraffin, Immunoprecipitation, Dual RNAscope ISH-IHC
Recommended Dilutions	Western Blot, Flow Cytometry, Immunohistochemistry, Immunocytochemistry/Immunofluorescence, Immunoprecipitation, Immunohistochemistry-Paraffin, Immunohistochemistry-Frozen, Electron Microscopy, Dual RNAscope ISH-IHC
Application Notes	Optimal dilution of this antibody should be experimentally determined.

Images

CD68/SR-D1 Antibody (KP1) [PE] [NB100-683PE] - Vial of PE conjugated antibody. PE has two excitation maxima, 498 nm excited by the Blue laser (488 nm) and 565 nm excited by the Yellow-Green laser (561 nm). Both result in emission at 578 nm.



Publications

Pan Y, Hu Q, Yang Y et al. Characterization of pain-related behaviors and gene expression profiling of peripheral sensory ganglia in a mouse model of acute ankle sprain *Frontiers in Behavioral Neuroscience* 2023-05-25 [PMID: 37304762] (IHC-Fr, Mouse)





Novus Biologicals USA

10730 E. Briarwood Avenue
Centennial, CO 80112
USA
Phone: 303.730.1950
Toll Free: 1.888.506.6887
Fax: 303.730.1966
nb-customerservice@bio-techne.com

Bio-Techne Canada

21 Canmotor Ave
Toronto, ON M8Z 4E6
Canada
Phone: 905.827.6400
Toll Free: 855.668.8722
Fax: 905.827.6402
canada.inquires@bio-techne.com

Bio-Techne Ltd

19 Barton Lane
Abingdon Science Park
Abingdon, OX14 3NB, United Kingdom
Phone: (44) (0) 1235 529449
Free Phone: 0800 37 34 15
Fax: (44) (0) 1235 533420
info.EMEA@bio-techne.com

General Contact Information

www.novusbio.com
Technical Support: nb-technical@bio-techne.com
Orders: nb-customerservice@bio-techne.com
General: novus@novusbio.com

Products Related to NB100-683PE

NBP1-43319PE-0.5ml	Mouse IgG1 Kappa Isotype Control (P3.6.2.8.1) [PE]
NBP2-22756	Recombinant Human CD68/SR-D1 His Protein
210-TA-005	TNF-alpha [Unconjugated]
10301-SR-050	CD68/SR-D1 [Unconjugated]

Limitations

This product is for research use only and is not approved for use in humans or in clinical diagnosis. Primary Antibodies are guaranteed for 1 year from date of receipt.

For more information on our 100% guarantee, please visit www.novusbio.com/guarantee

Earn gift cards/discounts by submitting a review: www.novusbio.com/reviews/submit/NB100-683PE

Earn gift cards/discounts by submitting a publication using this product:
www.novusbio.com/publications

