

# Product Datasheet

## MAP1B Antibody - BSA Free

### NB100-68256

Unit Size: 100 ul

Store at 4C. Do not freeze.

[www.novusbio.com](http://www.novusbio.com)



[technical@novusbio.com](mailto:technical@novusbio.com)

#### Publications: 3

Protocols, Publications, Related Products, Reviews, Research Tools and Images at:  
[www.novusbio.com/NB100-68256](http://www.novusbio.com/NB100-68256)

Updated 2/21/2025 v.20.1

Earn rewards for product  
reviews and publications.

Submit a publication at [www.novusbio.com/publications](http://www.novusbio.com/publications)

Submit a review at [www.novusbio.com/reviews/destination/NB100-68256](http://www.novusbio.com/reviews/destination/NB100-68256)



**NB100-68256**

MAP1B Antibody - BSA Free

**Product Information**

<b>Unit Size</b>	100 ul
<b>Concentration</b>	1.0 mg/ml
<b>Storage</b>	Store at 4C. Do not freeze.
<b>Clonality</b>	Polyclonal
<b>Preservative</b>	0.09% Sodium Azide
<b>Isotype</b>	IgG
<b>Purity</b>	Immunogen affinity purified
<b>Buffer</b>	Tris-Citrate/Phosphate (pH 7.0 - 8.0)

**Product Description**

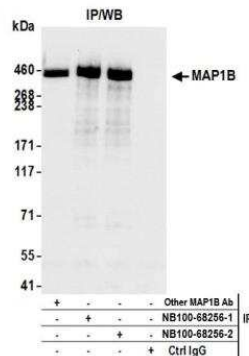
<b>Host</b>	Rabbit
<b>Gene ID</b>	4131
<b>Gene Symbol</b>	MAP1B
<b>Species</b>	Human, Mouse
<b>Reactivity Notes</b>	Mouse reactivity reported in (PMID:24664738).
<b>Marker</b>	Neuronal Marker
<b>Immunogen</b>	The immunogen recognized by this antibody maps to a region between residue 900 and 950 of human microtubule-associated protein 1B using the numbering given in entry NP_005900.2 (GeneID 4131).

**Product Application Details**

<b>Applications</b>	Western Blot, Immunoprecipitation
<b>Recommended Dilutions</b>	Western Blot, Immunoprecipitation 2-10 ug/mg lysate
<b>Application Notes</b>	WB reported in scientific literature (PMID:24664738).

**Images**

Immunoprecipitation: MAP1B Antibody [NB100-68256] - Detection of human MAP1B by western blot of immunoprecipitates. Samples: Whole cell lysate (1.0 mg per IP reaction; 20% of IP loaded) from HEK293T cells prepared using NETN lysis buffer. Antibodies: Affinity purified rabbit anti-MAP1B antibody NB100-68256 (lot NB100-68256-2) used for IP at 6 ug per reaction. MAP1B was also immunoprecipitated by a previous lot of this antibody (lot NB100-68256-1) and another rabbit anti-MAP1B antibody. For blotting immunoprecipitated MAP1B, NB100-68256 was used at 0.1 ug/ml. Detection: Chemiluminescence with an exposure time of 3 seconds



## Publications

Iketani M, Hatomi M, Fujita Y, Watanabe N et Al. Inhalation of hydrogen gas mitigates sevoflurane-induced neuronal apoptosis in the neonatal cortex and is associated with changes in protein phosphorylation J Neurochem 2024-06-07 [PMID: 38849977]

Ebke LA, Sinha S, Pauer GJT, Hagstrom SA. Photoreceptor Compartment-Specific TULP1 Interactomes International Journal of Molecular Sciences 2021-07-28 [PMID: 34360830] (Immunoprecipitation, Western Blot)

Grossman GH, Beight CD, Ebke LA et al. Interaction of Tubby-Like Protein-1 (Tulp1) and Microtubule-Associated Protein (MAP) 1A and MAP1B in the Mouse Retina. Adv. Exp. Med. Biol. 2014-03-25 [PMID: 24664738] (WB, IP, Mouse)





### **Novus Biologicals USA**

10730 E. Briarwood Avenue  
Centennial, CO 80112  
USA  
Phone: 303.730.1950  
Toll Free: 1.888.506.6887  
Fax: 303.730.1966  
nb-customerservice@bio-techne.com

### **Bio-Techne Canada**

21 Canmotor Ave  
Toronto, ON M8Z 4E6  
Canada  
Phone: 905.827.6400  
Toll Free: 855.668.8722  
Fax: 905.827.6402  
canada.inquires@bio-techne.com

### **Bio-Techne Ltd**

19 Barton Lane  
Abingdon Science Park  
Abingdon, OX14 3NB, United Kingdom  
Phone: (44) (0) 1235 529449  
Free Phone: 0800 37 34 15  
Fax: (44) (0) 1235 533420  
info.EMEA@bio-techne.com

### **General Contact Information**

[www.novusbio.com](http://www.novusbio.com)  
Technical Support: nb-technical@bio-techne.com  
Orders: nb-customerservice@bio-techne.com  
General: novus@novusbio.com

### **Products Related to NB100-68256**

HAF008	Goat anti-Rabbit IgG Secondary Antibody [HRP]
NB7160	Goat anti-Rabbit IgG (H+L) Secondary Antibody [HRP]
NBP2-24891	Rabbit IgG Isotype Control
NBP1-81261PEP	MAP1B Recombinant Protein Antigen

### **Limitations**

This product is for research use only and is not approved for use in humans or in clinical diagnosis. Primary Antibodies are guaranteed for 1 year from date of receipt.

For more information on our 100% guarantee, please visit [www.novusbio.com/guarantee](http://www.novusbio.com/guarantee)

Earn gift cards/discounts by submitting a review: [www.novusbio.com/reviews/submit/NB100-68256](http://www.novusbio.com/reviews/submit/NB100-68256)

Earn gift cards/discounts by submitting a publication using this product:  
[www.novusbio.com/publications](http://www.novusbio.com/publications)

