

# Product Datasheet

## CTR9 Antibody - BSA Free

### NB100-68205

Unit Size: 100 ul

Store at 4C. Do not freeze.

[www.novusbio.com](http://www.novusbio.com)



[technical@novusbio.com](mailto:technical@novusbio.com)

#### Publications: 1

Protocols, Publications, Related Products, Reviews, Research Tools and Images at:  
[www.novusbio.com/NB100-68205](http://www.novusbio.com/NB100-68205)

Updated 9/9/2025 v.20.1

Earn rewards for product  
reviews and publications.

Submit a publication at [www.novusbio.com/publications](http://www.novusbio.com/publications)

Submit a review at [www.novusbio.com/reviews/destination/NB100-68205](http://www.novusbio.com/reviews/destination/NB100-68205)



**NB100-68205**

CTR9 Antibody - BSA Free

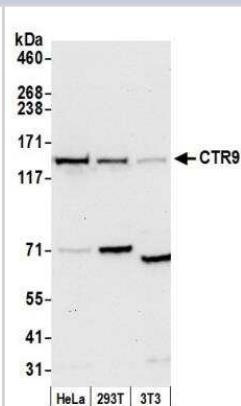
Product Information	
Unit Size	100 ul
Concentration	1.0 mg/ml
Storage	Store at 4C. Do not freeze.
Clonality	Polyclonal
Preservative	0.09% Sodium Azide
Isotype	IgG
Purity	Immunogen affinity purified
Buffer	Tris-Citrate/Phosphate (pH 7.0 - 8.0)
Target Molecular Weight	133.5 kDa

Product Description	
Description	Novus Biologicals Rabbit CTR9 Antibody - BSA Free (NB100-68205) is a polyclonal antibody validated for use in IHC, WB and IP. Anti-CTR9 Antibody: Cited in 1 publication. All Novus Biologicals antibodies are covered by our 100% guarantee.
Host	Rabbit
Gene ID	9646
Gene Symbol	CTR9
Species	Human, Mouse
Immunogen	The immunogen recognized by this antibody maps to a region between residue 1123 and 1173 of human Paf1/RNA polymerase II complex component homolog CTR9 using the numbering given in entry NP_055448.1 (GeneID 9646).

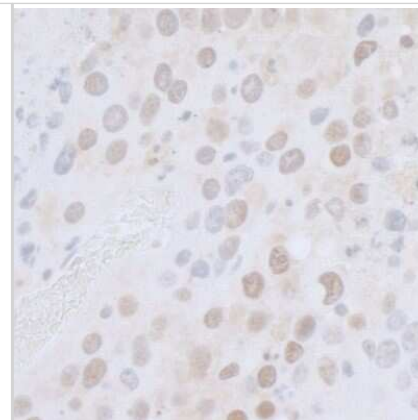
Product Application Details	
Applications	Western Blot, Immunohistochemistry-Paraffin, Immunohistochemistry, Immunoprecipitation
Recommended Dilutions	Western Blot 1:2000-1:10000, Immunohistochemistry 1:1000 - 1:5000, Immunoprecipitation 2-5 ug/mg lysate, Immunohistochemistry-Paraffin 1:250
Application Notes	Epitope retrieval with citrate buffer pH6.0 is recommended for FFPE tissue sections.

**Images**

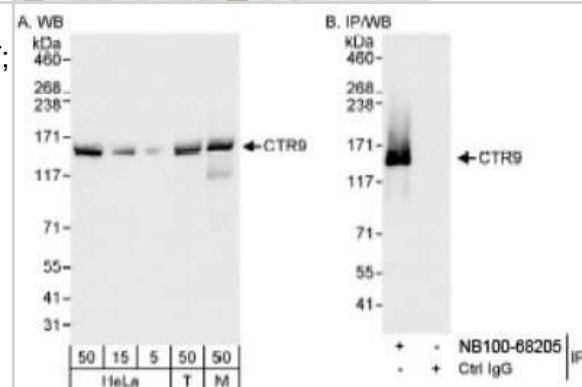
Western Blot: CTR9 Antibody [NB100-68205] - Detection of Human and Mouse CTR9 by Western Blot. Samples: Whole cell lysate (50 ug) from HeLa, 293T, and mouse NIH3T3 cells prepared using NETN lysis buffer. Antibody: Affinity purified rabbit anti-CTR9 antibody NB100-68205 used for WB at 0.1 ug/ml. Detection: Chemiluminescence with an exposure time of 30 seconds.



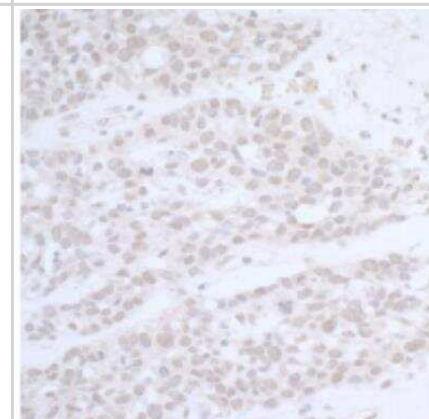
Immunohistochemistry: CTR9 Antibody [NB100-68205] - Sample: FFPE section of mouse renal cell carcinoma. Antibody: Affinity purified rabbit anti-CTR9 used at a dilution of 1:5,000 (0.2ug/ml). Detection: DAB. Counterstain: Hematoxylin (blue).



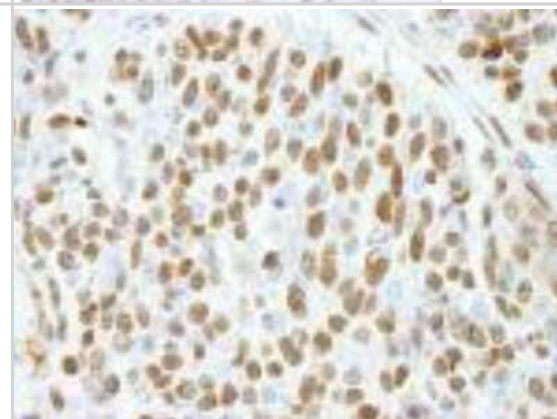
Western Blot: CTR9 Antibody [NB100-68205] - Whole cell lysate from HeLa (5, 15 and 50 mcg for WB; 1 mg for IP, 20% of IP loaded), 293T (T; 50 mcg) and mouse NIH3T3 (M; 50 mcg) cells. NB100-68205 used for WB at 0.04 mcg/ml (A) and 0.1 mcg/ml (B) and used for IP at 3 mcg/mg lysate.



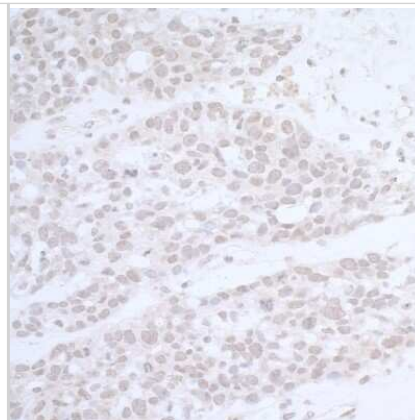
Immunohistochemistry-Paraffin: CTR9 Antibody [NB100-68205] - FFPE section of human ovarian carcinoma. Antibody: Affinity purified rabbit anti-CTR9 used at a dilution of 1:5,000 (0.2 ug/ml). Detection: DAB. Counterstain: Hematoxylin (blue).



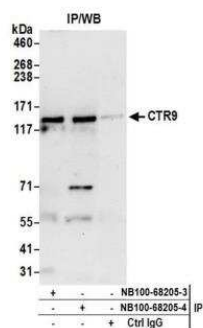
Immunohistochemistry-Paraffin: CTR9 Antibody [NB100-68205] - FFPE section of human breast carcinoma. Affinity purified rabbit anti-CTR9 used at a dilution of 1:250.



Immunohistochemistry: CTR9 Antibody [NB100-68205] - Sample: FFPE section of human ovarian carcinoma. Antibody: Affinity purified rabbit anti-CTR9 used at a dilution of 1:5,000 (0.2ug/ml). Detection: DAB. Counterstain: Hematoxylin (blue).



Immunoprecipitation: CTR9 Antibody [NB100-68205] - Detection of human CTR9 by western blot of immunoprecipitates. Samples: Whole cell lysate (0.5 or 1.0 mg per IP reaction; 20% of IP loaded) from HeLa cells prepared using NETN lysis buffer. Antibodies: Affinity purified rabbit anti-CTR9 antibody NB100-68205 (lot NB100-68205-4) used for IP at 6 ug per reaction. CTR9 was also immunoprecipitated by a previous lot of this antibody (lot NB100-68205-3). For blotting immunoprecipitated CTR9, NB100-68205 was used at 1 ug/ml. Detection: Chemiluminescence with an exposure time of 30 seconds.



## Publications

Gaballa A, Gebhardt-Wolf A, Krenz B et Al. PAF1c links S-phase progression to immune evasion and MYC function in pancreatic carcinoma Nat Commun 2024-02-16 [PMID: 38365788]



### **Novus Biologicals USA**

10730 E. Briarwood Avenue  
Centennial, CO 80112  
USA  
Phone: 303.730.1950  
Toll Free: 1.888.506.6887  
Fax: 303.730.1966  
nb-customerservice@bio-techne.com

### **Bio-Techne Canada**

21 Canmotor Ave  
Toronto, ON M8Z 4E6  
Canada  
Phone: 905.827.6400  
Toll Free: 855.668.8722  
Fax: 905.827.6402  
canada.inquires@bio-techne.com

### **Bio-Techne Ltd**

19 Barton Lane  
Abingdon Science Park  
Abingdon, OX14 3NB, United Kingdom  
Phone: (44) (0) 1235 529449  
Free Phone: 0800 37 34 15  
Fax: (44) (0) 1235 533420  
info.EMEA@bio-techne.com

### **General Contact Information**

www.novusbio.com  
Technical Support: nb-technical@bio-techne.com  
Orders: nb-customerservice@bio-techne.com  
General: novus@novusbio.com

### **Products Related to NB100-68205**

---

NBL1-09582	CTR9 Overexpression Lysate
NBP2-33376H	Blue Marker Antibody (6F4-F6) [HRP]
HAF008	Goat anti-Rabbit IgG Secondary Antibody [HRP]
NB7160	Goat anti-Rabbit IgG (H+L) Secondary Antibody [HRP]
NBP2-24891	Rabbit IgG Isotype Control

---

### **Limitations**

This product is for research use only and is not approved for use in humans or in clinical diagnosis. Primary Antibodies are guaranteed for 1 year from date of receipt.

For more information on our 100% guarantee, please visit [www.novusbio.com/guarantee](http://www.novusbio.com/guarantee)

Earn gift cards/discounts by submitting a review: [www.novusbio.com/reviews/submit/NB100-68205](http://www.novusbio.com/reviews/submit/NB100-68205)

Earn gift cards/discounts by submitting a publication using this product:  
[www.novusbio.com/publications](http://www.novusbio.com/publications)

