

Product Datasheet

Insulysin/IDE Antibody NB100-68148

Unit Size: 0.1 mg

Store at -20C. Avoid freeze-thaw cycles.

www.novusbio.com



technical@novusbio.com

Publications: 1

Protocols, Publications, Related Products, Reviews, Research Tools and Images at:
www.novusbio.com/NB100-68148

Updated 10/23/2024 v.20.1

Earn rewards for product
reviews and publications.

Submit a publication at www.novusbio.com/publications

Submit a review at www.novusbio.com/reviews/destination/NB100-68148



NB100-68148**Insulysin/IDE Antibody**

Product Information	
Unit Size	0.1 mg
Concentration	0.5 mg/ml
Storage	Store at -20C. Avoid freeze-thaw cycles.
Clonality	Polyclonal
Preservative	0.02% Sodium Azide
Isotype	IgG
Purity	Immunogen affinity purified
Buffer	Tris saline (20 mM Tris pH 7.3, 150 mM NaCl), 0.5% BSA
Product Description	
Host	Goat
Gene ID	3416
Gene Symbol	IDE
Species	Human
Specificity/Sensitivity	This antibody is expected to recognize both reported isoforms (NP_004960.1 and NP_001159418.1).
Immunogen	Peptide with sequence C-QQYNFDRDNTTE corresponding to internal region according to NP_004960.1, NP_001159418.1.
Product Application Details	
Applications	Western Blot, Immunohistochemistry, Immunohistochemistry-Paraffin, Peptide ELISA
Recommended Dilutions	Western Blot 0.1 - 0.3 ug/mL, Immunohistochemistry 3 - 6 ug/mL, Immunohistochemistry-Paraffin 2.5 ug/mL, Peptide ELISA Detection limit 1:32000
Application Notes	WB: Approx. 110-120 kDa band observed in K562 lysates (calculated MW of 118 kDa band according to NP_004960.1).

Images

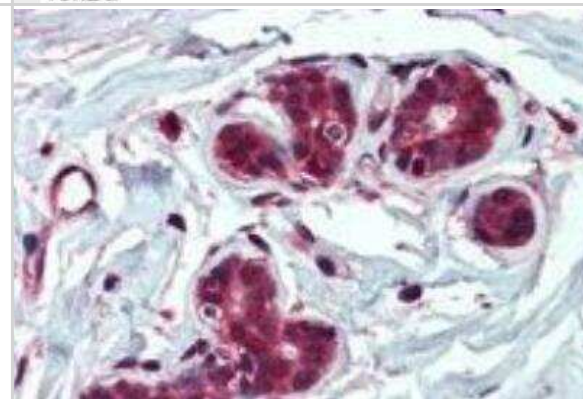
Western Blot: Insulysin/IDE Antibody [NB100-68148] - K562 cell lysate (35 ug protein in RIPA buffer). Antibody at 0.1 ug/mL. Detected by chemiluminescence.

250kDa
150kDa
100kDa
75kDa
50kDa
37kDa

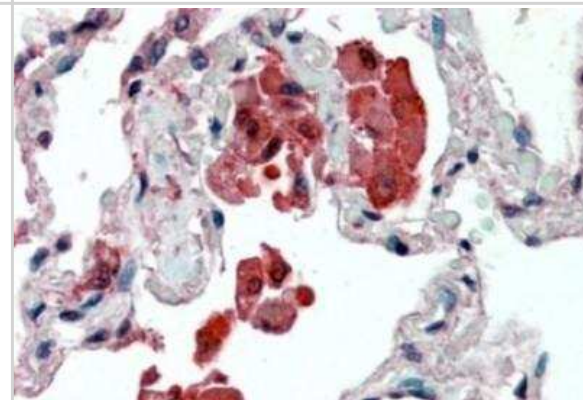
25kDa
20kDa

15kDa

Immunohistochemistry-Paraffin: Insulysin/IDE Antibody [NB100-68148] - Human Breast tissue. Antibody at 2.5 ug/mL. Steamed antigen retrieval with citrate buffer (pH 6), AP-staining.



Immunohistochemistry-Paraffin: Insulysin/IDE Antibody [NB100-68148] - Human Lung tissue. Antibody at 2.5 ug/mL. Steamed antigen retrieval with citrate buffer pH 6, AP-staining.



Publications

Zhao Z, Xiang Z, Haroutunian V et al. Insulin degrading enzyme activity selectively decreases in the hippocampal formation of cases at high risk to develop Alzheimer's disease. Neurobiol Aging 2007-06-01 [PMID: 16769157]



Novus Biologicals USA

10730 E. Briarwood Avenue
Centennial, CO 80112
USA
Phone: 303.730.1950
Toll Free: 1.888.506.6887
Fax: 303.730.1966
nb-customerservice@bio-techne.com

Bio-Techne Canada

21 Canmotor Ave
Toronto, ON M8Z 4E6
Canada
Phone: 905.827.6400
Toll Free: 855.668.8722
Fax: 905.827.6402
canada.inquires@bio-techne.com

Bio-Techne Ltd

19 Barton Lane
Abingdon Science Park
Abingdon, OX14 3NB, United Kingdom
Phone: (44) (0) 1235 529449
Free Phone: 0800 37 34 15
Fax: (44) (0) 1235 533420
info.EMEA@bio-techne.com

General Contact Information

www.novusbio.com
Technical Support: nb-technical@bio-techne.com
Orders: nb-customerservice@bio-techne.com
General: novus@novusbio.com

Products Related to NB100-68148

NBL1-11816	Insulysin/IDE Overexpression Lysate
HAF017	Rabbit anti-Goat IgG Secondary Antibody [HRP (Horseradish Peroxidase)]
HAF109	Donkey anti-Goat IgG Secondary Antibody [HRP (Horseradish Peroxidase)]
NB410-28088-1mg	Goat IgG Isotype Control

Limitations

This product is for research use only and is not approved for use in humans or in clinical diagnosis. Primary Antibodies are guaranteed for 1 year from date of receipt.

For more information on our 100% guarantee, please visit www.novusbio.com/guarantee

Earn gift cards/discounts by submitting a review: www.novusbio.com/reviews/submit/NB100-68148

Earn gift cards/discounts by submitting a publication using this product:
www.novusbio.com/publications



