

Product Datasheet

TCP1-eta Antibody (PK/16/8/a)

NB100-66571

Unit Size: 0.05 mg

Store at 4C short term. Aliquot and store at -20C long term. Avoid freeze-thaw cycles.

www.novusbio.com



technical@novusbio.com

Protocols, Publications, Related Products, Reviews, Research Tools and Images at:
www.novusbio.com/NB100-66571

Updated 10/23/2024 v.20.1

Earn rewards for product
reviews and publications.

Submit a publication at www.novusbio.com/publications

Submit a review at www.novusbio.com/reviews/destination/NB100-66571



NB100-66571

TCP1-eta Antibody (PK/16/8/a)

Product Information

Unit Size	0.05 mg
Concentration	1.0 mg/ml
Storage	Store at 4C short term. Aliquot and store at -20C long term. Avoid freeze-thaw cycles.
Clonality	Monoclonal
Clone	PK/16/8/a
Preservative	0.09% Sodium Azide
Isotype	IgG2a
Purity	Protein G purified
Buffer	PBS

Product Description

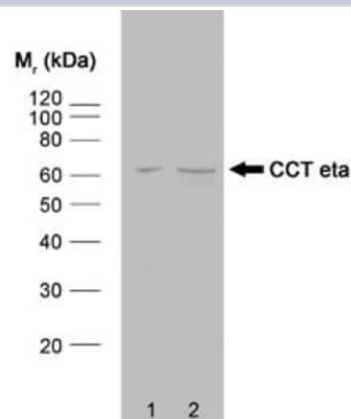
Host	Rat
Gene ID	10574
Gene Symbol	CCT7
Reactivity Notes	Cross reacts with Mouse, Human, Bovine and Rabbit.
Specificity/Sensitivity	NB100-66571 recognizes the eta polypeptide of the CCT chaperonin molecule complex. The intact CCT complex is composed of eight polypeptides in a double-ring structure. CCT is important within cells in aiding the folding of proteins including actin, tubulin and the VHL tumour suppressor protein.
Immunogen	Made to CCT ETA

Product Application Details

Applications	Western Blot, Immunohistochemistry, Immunohistochemistry-Paraffin
Recommended Dilutions	Western Blot 1:500, Immunohistochemistry 1:10-1:500, Immunohistochemistry-Paraffin 1:100
Application Notes	This product requires antigen retrieval using heat treatment prior to staining of paraffin sections. In WB detects a band of approximately 60kD in HeLa cell lysates.

Images

Western Blot: TCP1-eta Antibody (PK/16/8/a) [NB100-66571] - Western blot analysis of HeLa whole cell lysate (1) and HeLa heat stressed whole cell lysate (2) probed with RAT ANTI CCT ETA followed by F(ab')₂ RABBIT ANTI RAT IgG:HRP.





Novus Biologicals USA

10730 E. Briarwood Avenue
Centennial, CO 80112
USA
Phone: 303.730.1950
Toll Free: 1.888.506.6887
Fax: 303.730.1966
nb-customerservice@bio-techne.com

Bio-Techne Canada

21 Canmotor Ave
Toronto, ON M8Z 4E6
Canada
Phone: 905.827.6400
Toll Free: 855.668.8722
Fax: 905.827.6402
canada.inquires@bio-techne.com

Bio-Techne Ltd

19 Barton Lane
Abingdon Science Park
Abingdon, OX14 3NB, United Kingdom
Phone: (44) (0) 1235 529449
Free Phone: 0800 37 34 15
Fax: (44) (0) 1235 533420
info.EMEA@bio-techne.com

General Contact Information

www.novusbio.com
Technical Support: nb-technical@bio-techne.com
Orders: nb-customerservice@bio-techne.com
General: novus@novusbio.com

Limitations

This product is for research use only and is not approved for use in humans or in clinical diagnosis. Primary Antibodies are guaranteed for 1 year from date of receipt.

For more information on our 100% guarantee, please visit www.novusbio.com/guarantee

Earn gift cards/discounts by submitting a review: www.novusbio.com/reviews/submit/NB100-66571

Earn gift cards/discounts by submitting a publication using this product:
www.novusbio.com/publications

