

# Product Datasheet

## **RHCE Antibody (BRIC69) [mFluor Violet 500 SE] NB100-65887MFV500**

Unit Size: 0.1 ml

Store at 4C in the dark.

[www.novusbio.com](http://www.novusbio.com)



[technical@novusbio.com](mailto:technical@novusbio.com)

Protocols, Publications, Related Products, Reviews, Research Tools and Images at:  
[www.novusbio.com/NB100-65887MFV500](http://www.novusbio.com/NB100-65887MFV500)

Updated 7/11/2023 v.20.1

**Earn rewards for product  
reviews and publications.**

Submit a publication at [www.novusbio.com/publications](http://www.novusbio.com/publications)

Submit a review at [www.novusbio.com/reviews/destination/NB100-65887MFV500](http://www.novusbio.com/reviews/destination/NB100-65887MFV500)



**NB100-65887MFV500**

RHCE Antibody (BRIC69) [mFluor Violet 500 SE]

**Product Information**

<b>Unit Size</b>	0.1 ml
<b>Concentration</b>	Please see the vial label for concentration. If unlisted please contact technical services.
<b>Storage</b>	Store at 4C in the dark.
<b>Clonality</b>	Monoclonal
<b>Clone</b>	BRIC69
<b>Preservative</b>	0.05% Sodium Azide
<b>Isotype</b>	IgG1
<b>Conjugate</b>	mFluor Violet 500 SE
<b>Purity</b>	Protein A or G purified
<b>Buffer</b>	50mM Sodium Borate

**Product Description**

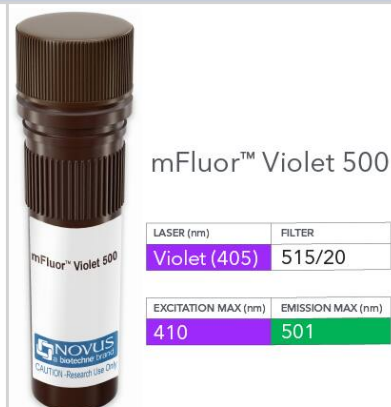
<b>Host</b>	Mouse
<b>Gene ID</b>	6006
<b>Gene Symbol</b>	RHCE
<b>Species</b>	Human
<b>Reactivity Notes</b>	Reacts with Human.
<b>Specificity/Sensitivity</b>	Recognizes human erythrocytes of normal Rh types but does not recognize Rh null erythrocytes. NB100-65887 reacts with 31kD and 35-52kD proteins which were designated CD240DCE at the 7th leucocyte typing workshop.
<b>Immunogen</b>	Human erythrocytes
<b>Notes</b>	mFluor(TM) is a trademark of AAT Bioquest, Inc. This conjugate is made on demand. Actual recovery may vary from the stated volume of this product. The volume will be greater than or equal to the unit size stated on the datasheet.

**Product Application Details**

<b>Applications</b>	Flow Cytometry, Immunoprecipitation
<b>Recommended Dilutions</b>	Flow Cytometry, Immunoprecipitation
<b>Application Notes</b>	Optimal dilution of this antibody should be experimentally determined.

**Images**

RHCE Antibody (BRIC69) [mFluor Violet 500 SE] - Vial of mFluor Violet 500 conjugated antibody. mFluor Violet 500 is optimally excited at 410 nm by the Violet laser (405 nm) and has an emission maximum of 501 nm.





### **Novus Biologicals USA**

10730 E. Briarwood Avenue  
Centennial, CO 80112  
USA  
Phone: 303.730.1950  
Toll Free: 1.888.506.6887  
Fax: 303.730.1966  
novus@novusbio.com

### **Bio-Techne Canada**

21 Canmotor Ave  
Toronto, ON M8Z 4E6  
Canada  
Phone: 905.827.6400  
Toll Free: 855.668.8722  
Fax: 905.827.6402  
canada.inquires@bio-techne.com

### **Bio-Techne Ltd**

19 Barton Lane  
Abingdon Science Park  
Abingdon, OX14 3NB, United Kingdom  
Phone: (44) (0) 1235 529449  
Free Phone: 0800 37 34 15  
Fax: (44) (0) 1235 533420  
info.EMEA@bio-techne.com

### **General Contact Information**

www.novusbio.com  
Technical Support: technical@novusbio.com  
Orders: orders@novusbio.com  
General: novus@novusbio.com

### **Products Related to NB100-65887MFV500**

---

NBP3-17923PEP	RHCE Recombinant Protein Antigen
7268-CT-100	CTLA-4 [Unconjugated]
NBL1-15345	RHCE Overexpression Lysate
NB100-524	NOD2 Antibody (2D9) - BSA Free

---

### **Limitations**

This product is for research use only and is not approved for use in humans or in clinical diagnosis. Primary Antibodies are guaranteed for 1 year from date of receipt.

For more information on our 100% guarantee, please visit [www.novusbio.com/guarantee](http://www.novusbio.com/guarantee)

Earn gift cards/discounts by submitting a review: [www.novusbio.com/reviews/submit/NB100-65887MFV500](http://www.novusbio.com/reviews/submit/NB100-65887MFV500)

Earn gift cards/discounts by submitting a publication using this product:  
[www.novusbio.com/publications](http://www.novusbio.com/publications)

