

Product Datasheet

Endoglin/CD105 Antibody (SN6) [PerCP] NB100-65601PCP

Unit Size: 0.1 ml

Store at 4C in the dark.

www.novusbio.com



technical@novusbio.com

Protocols, Publications, Related Products, Reviews, Research Tools and Images at:
www.novusbio.com/NB100-65601PCP

Updated 10/23/2024 v.20.1

Earn rewards for product
reviews and publications.

Submit a publication at www.novusbio.com/publications

Submit a review at www.novusbio.com/reviews/destination/NB100-65601PCP



NB100-65601PCP

Endoglin/CD105 Antibody (SN6) [PerCP]

Product Information	
Unit Size	0.1 ml
Concentration	Please see the vial label for concentration. If unlisted please contact technical services.
Storage	Store at 4C in the dark.
Clonality	Monoclonal
Clone	SN6
Preservative	0.05% Sodium Azide
Isotype	IgG1
Conjugate	PerCP
Purity	Protein G purified
Buffer	PBS

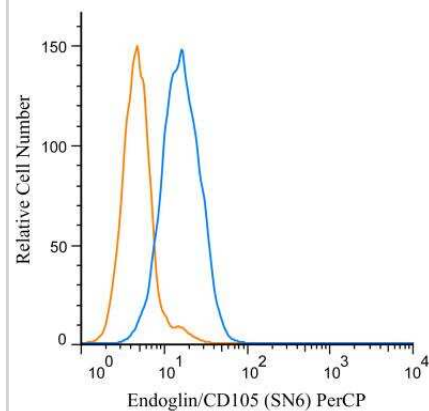
Product Description	
Description	This conjugate is made on demand. Actual recovery may vary from the stated volume of this product. The volume will be greater than or equal to the unit size stated on the datasheet.
Host	Mouse
Gene ID	2022
Gene Symbol	ENG
Species	Human
Reactivity Notes	Cross reacts with Horse, Cynomolgus Monkey, Rhesus Monkey, Monkey.
Marker	Neo-endothelial Cells Marker
Specificity/Sensitivity	Recognizes the human CD105 cell surface antigen, a glycoprotein homodimer of 95kD subunits. CD105 is also known as endoglin, and is expressed by endothelial cells, activated monocytes and some leukemia cells.
Immunogen	Partially purified cell membrane antigens from fresh leukemia cells

Product Application Details	
Applications	Western Blot, Flow Cytometry, Immunohistochemistry, Immunohistochemistry-Frozen, Immunoprecipitation
Recommended Dilutions	Western Blot, Flow Cytometry, Immunohistochemistry, Immunoprecipitation, Immunohistochemistry-Frozen



Images

Flow Cytometry: Endoglin/CD105 Antibody (SN6) [PerCP] [NB100-65601PCP] - A cell surface stain was performed on HeLa cells with Endoglin/CD105 antibody (SN6) NB100-65601PCP (blue) and a matched isotype control NBP2-27287AF647 (orange). Cells were incubated in an antibody dilution of 5 ug/mL for 20 minutes at room temperature. Both antibodies were conjugated to Peridinin-Chlorophyll-Protein complex.





Novus Biologicals USA

10730 E. Briarwood Avenue
Centennial, CO 80112
USA
Phone: 303.730.1950
Toll Free: 1.888.506.6887
Fax: 303.730.1966
nb-customerservice@bio-techne.com

Bio-Techne Canada

21 Canmotor Ave
Toronto, ON M8Z 4E6
Canada
Phone: 905.827.6400
Toll Free: 855.668.8722
Fax: 905.827.6402
canada.inquires@bio-techne.com

Bio-Techne Ltd

19 Barton Lane
Abingdon Science Park
Abingdon, OX14 3NB, United Kingdom
Phone: (44) (0) 1235 529449
Free Phone: 0800 37 34 15
Fax: (44) (0) 1235 533420
info.EMEA@bio-techne.com

General Contact Information

www.novusbio.com
Technical Support: nb-technical@bio-techne.com
Orders: nb-customerservice@bio-techne.com
General: novus@novusbio.com

Products Related to NB100-65601PCP

NBP1-97005PCP	Mouse IgG1 Isotype Control (MG1) [PerCP]
NB100-65601PE	Endoglin/CD105 Antibody (SN6) [PE]
NBP1-91212PEP	Endoglin/CD105 Recombinant Protein Antigen
DVE00	VEGF [HRP]

Limitations

This product is for research use only and is not approved for use in humans or in clinical diagnosis. Primary Antibodies are guaranteed for 1 year from date of receipt.

For more information on our 100% guarantee, please visit www.novusbio.com/guarantee

Earn gift cards/discounts by submitting a review: www.novusbio.com/reviews/submit/NB100-65601PCP

Earn gift cards/discounts by submitting a publication using this product:
www.novusbio.com/publications

