

# Product Datasheet

## Endoglin/CD105 Antibody (SN6) - BSA Free NB100-65601

Unit Size: 0.1 mg

Store at 4C short term. Aliquot and store at -20C long term. Avoid freeze-thaw cycles.

[www.novusbio.com](http://www.novusbio.com)



[technical@novusbio.com](mailto:technical@novusbio.com)

### Publications: 1

Protocols, Publications, Related Products, Reviews, Research Tools and Images at:  
[www.novusbio.com/NB100-65601](http://www.novusbio.com/NB100-65601)

Updated 2/21/2025 v.20.1

Earn rewards for product  
reviews and publications.

Submit a publication at [www.novusbio.com/publications](http://www.novusbio.com/publications)

Submit a review at [www.novusbio.com/reviews/destination/NB100-65601](http://www.novusbio.com/reviews/destination/NB100-65601)



**NB100-65601**

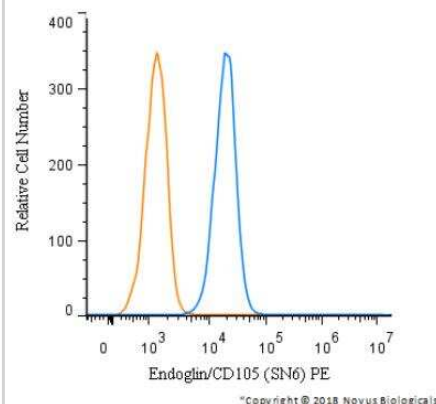
Endoglin/CD105 Antibody (SN6) - BSA Free

Product Information	
Unit Size	0.1 mg
Concentration	1 mg/ml
Storage	Store at 4C short term. Aliquot and store at -20C long term. Avoid freeze-thaw cycles.
Clonality	Monoclonal
Clone	SN6
Preservative	0.09% Sodium Azide
Isotype	IgG1
Purity	Protein G purified
Buffer	PBS
Product Description	
Host	Mouse
Gene ID	2022
Gene Symbol	ENG
Species	Human
Reactivity Notes	Predicted cross-reactivities: Cynomolgus monkey, Equine, Primate, Rhesus Monkey
Marker	Neo-endothelial Cells Marker
Specificity/Sensitivity	Recognizes the human CD105 cell surface antigen, a glycoprotein homodimer of 95kD subunits. CD105 is also known as endoglin, and is expressed by endothelial cells, activated monocytes and some leukemia cells.
Immunogen	Partially purified cell membrane antigens from fresh leukemia cells
Product Application Details	
Applications	Western Blot, Flow Cytometry, Immunohistochemistry, Immunohistochemistry-Frozen, Immunoprecipitation
Recommended Dilutions	Western Blot 1:100 - 1:2000, Flow Cytometry 1:50, Immunohistochemistry 1:10 - 1:500, Immunoprecipitation 1:10 - 1:500, Immunohistochemistry-Frozen 1:10 - 1:500
Application Notes	The epitope recognised by this antibody is reported to be sensitive to formaldehyde fixation and tissue processing. The use of acetone fixation for frozen sections is recommended.

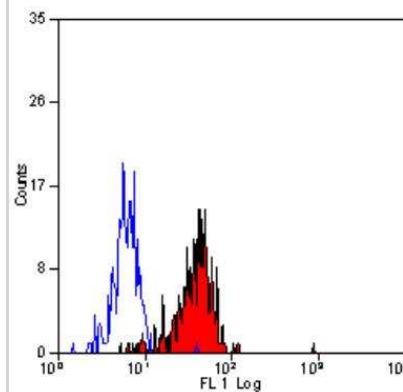


## Images

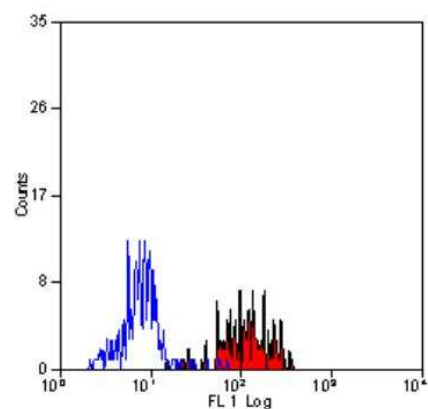
Flow Cytometry: Endoglin/CD105 Antibody (SN6) [NB100-65601] - A surface stain was performed on HeLa cells with Endoglin/CD105 Antibody (SN6) NB100-65601PE and a matched isotype control. Cells were incubated in an antibody dilution of 2.5 ug/mL for 20 minutes at room temperature. Both antibodies were conjugated to Phycoerythrin.



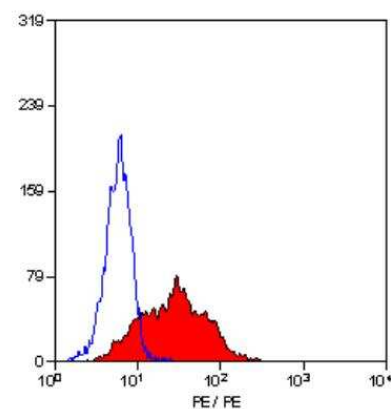
Flow Cytometry: Endoglin/CD105 Antibody (SN6) [NB100-65601] - Staining of human peripheral blood monocytes with Mouse anti Human CD105:Alexa Fluor 488



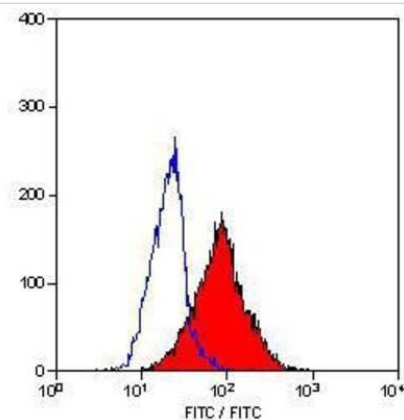
Flow Cytometry: Endoglin/CD105 Antibody (SN6) [NB100-65601] - Staining of human peripheral blood monocytes with Mouse anti Human CD105:Alexa Fluor 647



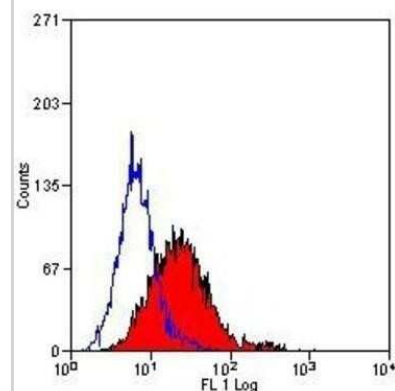
Flow Cytometry: Endoglin/CD105 Antibody (SN6) [NB100-65601] - Staining of KG1 cells with Mouse anti Human CD105RPE



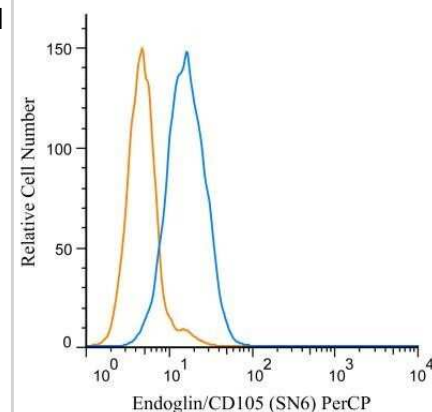
Flow Cytometry: Endoglin/CD105 Antibody (SN6) [NB100-65601] - Staining of KG1 cells with Mouse anti Human CD105



Flow Cytometry: Endoglin/CD105 Antibody (SN6) [NB100-65601] - Analysis using the FITC conjugate of NB100-65601. Staining of KG1 cells.



Flow Cytometry: Endoglin/CD105 Antibody (SN6) [NB100-65601] - A cell surface stain was performed on HeLa cells with Endoglin/CD105 antibody (SN6) NB100-65601PCP (blue) and a matched isotype control NBP2-27287AF647 (orange). Cells were incubated in an antibody dilution of 5 ug/mL for 20 minutes at room temperature. Both antibodies were conjugated to Peridinin-Chlorophyll-Protein complex.



## Publications

Cavalcanti BN. Pulp biology: aggression repair. Thesis. 2014-01-01 (WB, Human)

### Details:

Endoglin/CD105 antibody used for WB on lysates of unselected pulp cell populations (uDPC) and selected dental pulp stem cells (sDPC) isolated from a single extracted third molar of human patient (Figure 2B)



### **Novus Biologicals USA**

10730 E. Briarwood Avenue  
Centennial, CO 80112  
USA  
Phone: 303.730.1950  
Toll Free: 1.888.506.6887  
Fax: 303.730.1966  
nb-customerservice@bio-techne.com

### **Bio-Techne Canada**

21 Canmotor Ave  
Toronto, ON M8Z 4E6  
Canada  
Phone: 905.827.6400  
Toll Free: 855.668.8722  
Fax: 905.827.6402  
canada.inquires@bio-techne.com

### **Bio-Techne Ltd**

19 Barton Lane  
Abingdon Science Park  
Abingdon, OX14 3NB, United Kingdom  
Phone: (44) (0) 1235 529449  
Free Phone: 0800 37 34 15  
Fax: (44) (0) 1235 533420  
info.EMEA@bio-techne.com

### **General Contact Information**

www.novusbio.com  
Technical Support: nb-technical@bio-techne.com  
Orders: nb-customerservice@bio-techne.com  
General: novus@novusbio.com

### **Products Related to NB100-65601**

---

NBL1-10266	Endoglin/CD105 Overexpression Lysate
HAF007	Goat anti-Mouse IgG Secondary Antibody [HRP]
NB720-B	Rabbit anti-Mouse IgG (H+L) Secondary Antibody [Biotin]
NBP1-97005-0.5mg	Mouse IgG1 Isotype Control (MG1)

---

### **Limitations**

This product is for research use only and is not approved for use in humans or in clinical diagnosis. Primary Antibodies are guaranteed for 1 year from date of receipt.

For more information on our 100% guarantee, please visit [www.novusbio.com/guarantee](http://www.novusbio.com/guarantee)

Earn gift cards/discounts by submitting a review: [www.novusbio.com/reviews/submit/NB100-65601](http://www.novusbio.com/reviews/submit/NB100-65601)

Earn gift cards/discounts by submitting a publication using this product:  
[www.novusbio.com/publications](http://www.novusbio.com/publications)

