

Product Datasheet

L-Selectin/CD62L Antibody (FMC46) - BSA Free NB100-65388

Unit Size: 0.1 mg

Store at 4C short term. Aliquot and store at -20C long term. Avoid freeze-thaw cycles.

www.novusbio.com



technical@novusbio.com

Publications: 1

Protocols, Publications, Related Products, Reviews, Research Tools and Images at:
www.novusbio.com/NB100-65388

Updated 2/21/2025 v.20.1

Earn rewards for product
reviews and publications.

Submit a publication at www.novusbio.com/publications

Submit a review at www.novusbio.com/reviews/destination/NB100-65388



NB100-65388

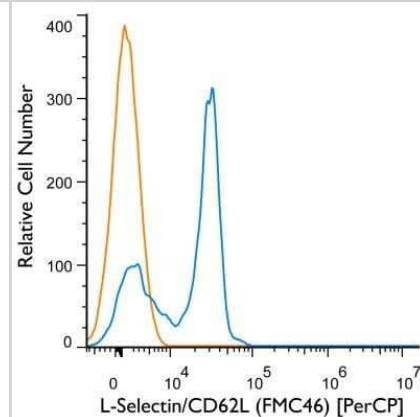
L-Selectin/CD62L Antibody (FMC46) - BSA Free

Product Information	
Unit Size	0.1 mg
Concentration	1.0 mg/ml
Storage	Store at 4C short term. Aliquot and store at -20C long term. Avoid freeze-thaw cycles.
Clonality	Monoclonal
Clone	FMC46
Preservative	0.09% Sodium Azide
Isotype	IgG2b
Purity	Protein A purified
Buffer	PBS
Product Description	
Host	Mouse
Gene ID	6402
Gene Symbol	SELL
Species	Human
Reactivity Notes	Predicted cross-reactivities: Cynomolgus monkey, Dog, Bovine, Rhesus Monkey
Specificity/Sensitivity	NB100-65388 recognizes human CD62L, also known as L-selectin, a 74-95kDa member of the selectin family of adhesion receptors, which acts as a ligand for both CD62-P (P-selectin) and CD62E (E-selectin). Human CD62L is constitutively expressed on most leucocytes including monocytes, granulocytes, lymphocytes, NK cells, bone marrow myeloid progenitor cells and on a subset of thymocytes. CD62L plays an important role in leucocyte tethering and rolling on the endothelial cell surface and for the homing of naive lymphocytes to lymph nodes and Peyer's patches via HEV. Neutrophils require a constant supply of this molecule on the cell surface for migration into peripheral tissues and adhesion to activated endothelium at sites of inflammation, where CD62L is rapidly shed as soluble L-selectin, but surface expression still remains. The expression of CD62L is down regulated on lymphocytes and neutrophils by PMA stimulation.
Immunogen	PHA stimulated lymphoblasts
Product Application Details	
Applications	Flow Cytometry, Immunohistochemistry, Immunohistochemistry-Frozen, Immunohistochemistry-Paraffin, Immunoprecipitation
Recommended Dilutions	Flow Cytometry 1:50-1:100, Immunohistochemistry 1:10-1:500, Immunoprecipitation 1:10-1:500, Immunohistochemistry-Paraffin, Immunohistochemistry-Frozen 1:10-1:500

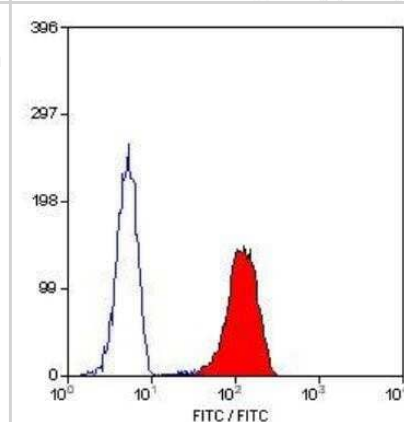


Images

Flow Cytometry: L-Selectin/CD62L Antibody (FMC46) [NB100-65388] - Flow Cytometry: L-Selectin/CD62L Antibody (FMC46) [PerCP] [NB100-65388PCP] - A cell surface stain was performed on human peripheral blood lymphocytes with L-Selectin/CD62L (FMC46) antibody NB100-65388PCP (blue) and a matched isotype control NBP2-27231PCP (orange). Cells were incubated in an antibody dilution of 5 ug/mL for 20 minutes at room temperature. Both antibodies were conjugated to Peridinin-Chlorophyll-Protein complex. Image using the PerCP form of this antibody.



Flow Cytometry: L-Selectin/CD62L Antibody (FMC46) [NB100-65388] - Staining of human peripheral blood granulocytes with Mouse anti Human CD62L:FITC



Publications

Thakur N, Evans H, Abdelsalam K et al. Bovine viral diarrhea virus compromises Neutrophil's functions in strain dependent manner Microbial pathogenesis 2020-09-22 [PMID: 32976968] (Flow-CS, Bovine)



Novus Biologicals USA

10730 E. Briarwood Avenue
Centennial, CO 80112
USA
Phone: 303.730.1950
Toll Free: 1.888.506.6887
Fax: 303.730.1966
nb-customerservice@bio-techne.com

Bio-Techne Canada

21 Canmotor Ave
Toronto, ON M8Z 4E6
Canada
Phone: 905.827.6400
Toll Free: 855.668.8722
Fax: 905.827.6402
canada.inquires@bio-techne.com

Bio-Techne Ltd

19 Barton Lane
Abingdon Science Park
Abingdon, OX14 3NB, United Kingdom
Phone: (44) (0) 1235 529449
Free Phone: 0800 37 34 15
Fax: (44) (0) 1235 533420
info.EMEA@bio-techne.com

General Contact Information

www.novusbio.com
Technical Support: nb-technical@bio-techne.com
Orders: nb-customerservice@bio-techne.com
General: novus@novusbio.com

Products Related to NB100-65388

HAF007	Goat anti-Mouse IgG Secondary Antibody [HRP]
NB720-B	Rabbit anti-Mouse IgG (H+L) Secondary Antibody [Biotin]
NBP2-27231	Mouse IgG2b Isotype Control (MPC-11)
NB100-65388PE	L-Selectin/CD62L Antibody (FMC46) [PE]

Limitations

This product is for research use only and is not approved for use in humans or in clinical diagnosis. Primary Antibodies are guaranteed for 1 year from date of receipt.

For more information on our 100% guarantee, please visit www.novusbio.com/guarantee

Earn gift cards/discounts by submitting a review: www.novusbio.com/reviews/submit/NB100-65388

Earn gift cards/discounts by submitting a publication using this product:
www.novusbio.com/publications

