

# Product Datasheet

## CD1b Antibody (CC20) - BSA Free NB100-65315

Unit Size: 0.125 mg

Store at 4C short term. Aliquot and store at -20C long term. Avoid freeze-thaw cycles.

[www.novusbio.com](http://www.novusbio.com)



[technical@novusbio.com](mailto:technical@novusbio.com)

Protocols, Publications, Related Products, Reviews, Research Tools and Images at:  
[www.novusbio.com/NB100-65315](http://www.novusbio.com/NB100-65315)

Updated 9/9/2025 v.20.1

Earn rewards for product  
reviews and publications.

Submit a publication at [www.novusbio.com/publications](http://www.novusbio.com/publications)

Submit a review at [www.novusbio.com/reviews/destination/NB100-65315](http://www.novusbio.com/reviews/destination/NB100-65315)



**NB100-65315**

CD1b Antibody (CC20) - BSA Free

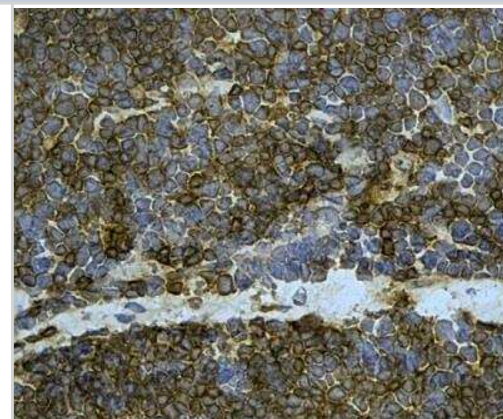
Product Information	
Unit Size	0.125 mg
Concentration	1.0 mg/ml
Storage	Store at 4C short term. Aliquot and store at -20C long term. Avoid freeze-thaw cycles.
Clonality	Monoclonal
Clone	CC20
Preservative	0.09% Sodium Azide
Isotype	IgG2a
Purity	Protein A purified
Buffer	PBS

Product Description	
Description	Novus Biologicals Mouse CD1b Antibody (CC20) - BSA Free (NB100-65315) is a monoclonal antibody validated for use in IHC, Flow and IP. All Novus Biologicals antibodies are covered by our 100% guarantee.
Host	Mouse
Gene ID	910
Gene Symbol	CD1B
Species	Bovine
Reactivity Notes	Predicted cross-reactivities: Sheep, Equine, Goat, Dog, Feline
Specificity/Sensitivity	Recognizes the bovine CD1w2 cell surface antigen, a glycoprotein heterodimer of 12kD and 46kD. CD1w2 is expressed by cortical thymocytes and a minority of medullary thymocytes, with a pattern similar to antibodies of the CD1b cluster in humans.
Immunogen	Made to Bovine CD1w2

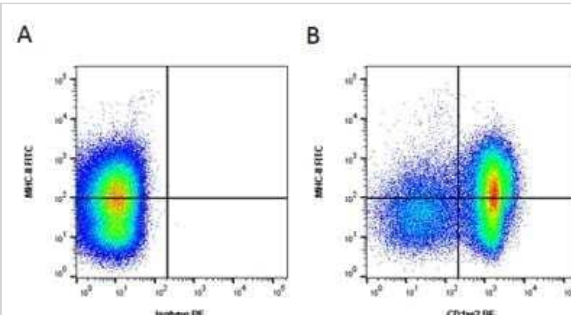
Product Application Details	
Applications	Flow Cytometry, Immunohistochemistry, Immunohistochemistry-Frozen, Immunoprecipitation
Recommended Dilutions	Flow Cytometry 1:25-1:50, Immunohistochemistry 1:10-1:500, Immunoprecipitation 1:10-1:500, Immunohistochemistry-Frozen 1:10-1:500

**Images**

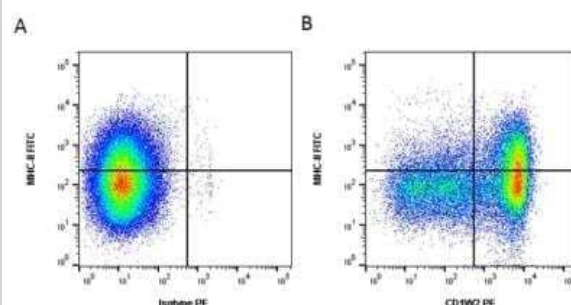
Immunohistochemistry: CD1b Antibody (CC20) [NB100-65315] - Detection of Mouse anti Bovine CD1w2 in an analysis on acetone-fixed frozen bovine thymus using the Histar detection system, original magnification x60.



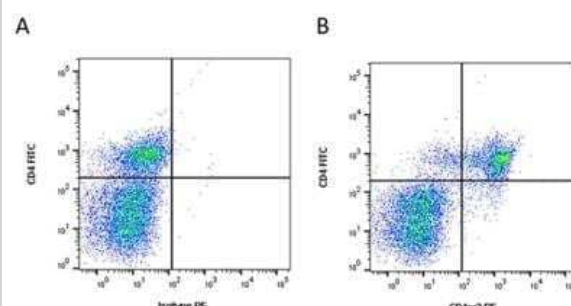
Flow Cytometry: CD1b Antibody (CC20) [NB100-65315] - Figure A. FITC conjugated Mouse anti Bovine MHC Class II Monomorphic Antibody and Mouse IgG2a isotype control conjugated with Rabbit F(ab')<sub>2</sub> anti Mouse IgG:RPE Antibody. Figure B. FITC conjugated Mouse anti Bovine MHC Class II Monomorphic Antibody and Mouse anti Bovine CD1w2 Antibody conjugated with Rabbit F(ab')<sub>2</sub> anti Mouse IgG:RPE Antibody.



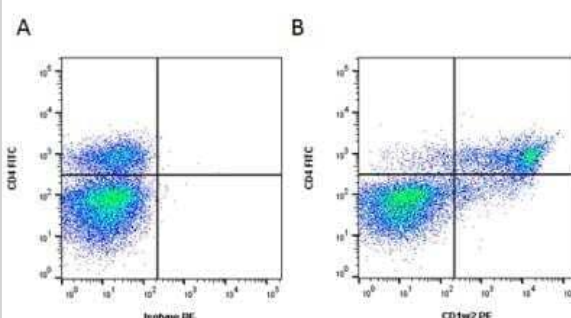
Flow Cytometry: CD1b Antibody (CC20) [NB100-65315] - Figure A. FITC conjugated Mouse anti Bovine MHC Class II Monomorphic Antibody and RPE conjugated Mouse IgG2a isotype control. Figure B. FITC conjugated Mouse anti Bovine MHC Class II Monomorphic Antibody and RPE conjugated Mouse anti Bovine CD1w2 Antibody. All experiments performed on bovine thymocytes in the presence of 10% bovine serum and gated on live, single cell thymocytes.



Flow Cytometry: CD1b Antibody (CC20) [NB100-65315] - Figure A. FITC conjugated Mouse anti Bovine CD4 Antibody and Mouse IgG2a isotype control conjugated with Rabbit F(ab')<sub>2</sub> anti Mouse IgG:RPE Antibody. Figure B. FITC conjugated Mouse anti Bovine CD4 Antibody and Mouse anti Bovine CD1w2 Antibody conjugated with Rabbit F(ab')<sub>2</sub> anti Mouse IgG:RPE Antibody.



Flow Cytometry: CD1b Antibody (CC20) [NB100-65315] - Figure A. FITC conjugated Mouse anti Bovine CD4 Antibody and RPE conjugated Mouse IgG2a isotype control. Figure B. FITC conjugated Mouse anti Bovine CD4 Antibody and RPE conjugated Mouse anti Bovine CD1w2 Antibody.





### **Novus Biologicals USA**

10730 E. Briarwood Avenue  
Centennial, CO 80112  
USA  
Phone: 303.730.1950  
Toll Free: 1.888.506.6887  
Fax: 303.730.1966  
nb-customerservice@bio-techne.com

### **Bio-Techne Canada**

21 Canmotor Ave  
Toronto, ON M8Z 4E6  
Canada  
Phone: 905.827.6400  
Toll Free: 855.668.8722  
Fax: 905.827.6402  
canada.inquires@bio-techne.com

### **Bio-Techne Ltd**

19 Barton Lane  
Abingdon Science Park  
Abingdon, OX14 3NB, United Kingdom  
Phone: (44) (0) 1235 529449  
Free Phone: 0800 37 34 15  
Fax: (44) (0) 1235 533420  
info.EMEA@bio-techne.com

### **General Contact Information**

[www.novusbio.com](http://www.novusbio.com)  
Technical Support: nb-technical@bio-techne.com  
Orders: nb-customerservice@bio-techne.com  
General: novus@novusbio.com

### **Products Related to NB100-65315**

HAF007	Goat anti-Mouse IgG Secondary Antibody [HRP]
NB720-B	Rabbit anti-Mouse IgG (H+L) Secondary Antibody [Biotin]
NBP1-96778	Mouse IgG2a Isotype Control (M2A)
NB100-65315UV	CD1b Antibody (CC20) [DyLight 350]

### **Limitations**

This product is for research use only and is not approved for use in humans or in clinical diagnosis. Primary Antibodies are guaranteed for 1 year from date of receipt.

For more information on our 100% guarantee, please visit [www.novusbio.com/guarantee](http://www.novusbio.com/guarantee)

Earn gift cards/discounts by submitting a review: [www.novusbio.com/reviews/submit/NB100-65315](http://www.novusbio.com/reviews/submit/NB100-65315)

Earn gift cards/discounts by submitting a publication using this product:  
[www.novusbio.com/publications](http://www.novusbio.com/publications)

