

Product Datasheet

Enolase 1 Antibody NB100-65252

Unit Size: 0.5 ml

Store at 4C short term. Aliquot and store at -20C long term. Avoid freeze-thaw cycles.

www.novusbio.com



technical@novusbio.com

Publications: 4

Protocols, Publications, Related Products, Reviews, Research Tools and Images at:
www.novusbio.com/NB100-65252

Updated 12/11/2024 v.20.1

Earn rewards for product
reviews and publications.

Submit a publication at www.novusbio.com/publications

Submit a review at www.novusbio.com/reviews/destination/NB100-65252



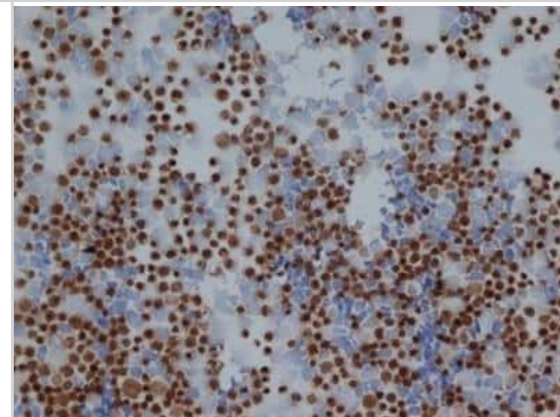
NB100-65252

Enolase 1 Antibody

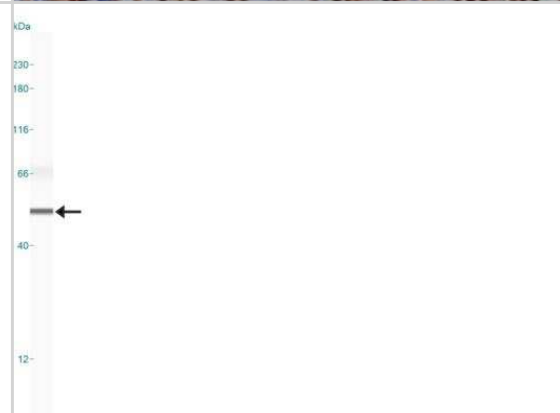
Product Information	
Unit Size	0.5 ml
Concentration	5 mg/ml
Storage	Store at 4C short term. Aliquot and store at -20C long term. Avoid freeze-thaw cycles.
Clonality	Polyclonal
Preservative	0.09% Sodium Azide
Isotype	IgG
Purity	Protein G purified
Buffer	PBS
Product Description	
Host	Rabbit
Gene ID	2023
Gene Symbol	ENO1
Species	Human, Mouse, Bovine
Reactivity Notes	Bovine reactivity reported in scientific literature (PMID: 21051714). Use in Mouse reported in scientific literature (PMID:28495754).
Specificity/Sensitivity	This recognises human Non-neuronal enolase, and demonstrates less than 0.1% cross-reactivity with non-specific enolase. Non-neuronal enolase is a glycolytic enzyme composed of homodimeric alpha enolase subunits and is expressed in most human tissues. The gene coding for the 48kDa form of non-neuronal enolase also codes for a shorter 37kDa isoform, myc-binding protein 1 (MBP-1) lacking the N-terminal 93 amino acids of non-neuronal enolase.
Immunogen	Native human Enolase 1
Product Application Details	
Applications	Western Blot, Simple Western, ELISA, Immunocytochemistry/Immunofluorescence, Immunohistochemistry, Immunohistochemistry-Frozen, Immunohistochemistry-Paraffin
Recommended Dilutions	Western Blot 1:100 - 1:2000, Simple Western 1:5000, ELISA 1:100 - 1:2000, Immunohistochemistry 1:10 - 1:500, Immunocytochemistry/Immunofluorescence, Immunohistochemistry-Paraffin 1:25 - 1:100, Immunohistochemistry-Frozen 1:25 - 1:100
Application Notes	In Simple Western only 10 - 15 uL of the recommended dilution is used per data point. Separated by Size.

Images

Immunohistochemistry: Enolase 1 Antibody [NB100-65252] - Staining of Jurkat cells with rabbit anti human Enolase 1 .



Simple Western: Enolase 1 Antibody [NB100-65252] - Simple Western lane view shows a specific band for Enolase 1 in 0.2 mg/ml of HeLa lysate. This experiment was performed under reducing conditions using the 12-230 kDa separation system.



Publications

Schoepflin Z R, Silagi E S et al. PHD3 is a transcriptional coactivator of HIF-1 alpha in nucleus pulposus cells independent of the PKM2-JMJD5 axis. *FASEB J* 2017-01-09 [PMID: 28495754] (IF/IHC, Mouse)

David BT, Curtin JJ, Goldberg DC et al. Hypoxia Inducible Factor 1 alpha (HIF-1 alpha) counteracts the acute death of cells transplanted into the injured spinal cord eNeuro [PMID: 31488552] (WB)

Pan H, Strickland A, Madhu V et al. RNA binding protein HuR regulates extracellular matrix gene expression and pH homeostasis independent of controlling HIF-1a signaling in nucleus pulposus cells *Matrix Biol.* 2018-08-06 [PMID: 30092282] (WB)

Smith WC, Bolch S, Dugger DR et al. Interaction of arrestin with enolase1 in photoreceptors. *Invest Ophthalmol Vis Sci.* 2011-03-29 [PMID: 21051714] (WB, Bovine)



Novus Biologicals USA

10730 E. Briarwood Avenue
Centennial, CO 80112
USA
Phone: 303.730.1950
Toll Free: 1.888.506.6887
Fax: 303.730.1966
nb-customerservice@bio-techne.com

Bio-Techne Canada

21 Canmotor Ave
Toronto, ON M8Z 4E6
Canada
Phone: 905.827.6400
Toll Free: 855.668.8722
Fax: 905.827.6402
canada.inquires@bio-techne.com

Bio-Techne Ltd

19 Barton Lane
Abingdon Science Park
Abingdon, OX14 3NB, United Kingdom
Phone: (44) (0) 1235 529449
Free Phone: 0800 37 34 15
Fax: (44) (0) 1235 533420
info.EMEA@bio-techne.com

General Contact Information

www.novusbio.com
Technical Support: nb-technical@bio-
techne.com
Orders: nb-customerservice@bio-techne.com
General: novus@novusbio.com

Limitations

This product is for research use only and is not approved for use in humans or in clinical diagnosis. Primary Antibodies are guaranteed for 1 year from date of receipt.

For more information on our 100% guarantee, please visit www.novusbio.com/guarantee

Earn gift cards/discounts by submitting a review: www.novusbio.com/reviews/submit/NB100-65252

Earn gift cards/discounts by submitting a publication using this product:
www.novusbio.com/publications

