

# Product Datasheet

## Aminopeptidase N/CD13 Antibody (ER-BMDM1) [FITC] NB100-64843F

Unit Size: 0.125 ml

Store at 4C in the dark.

[www.novusbio.com](http://www.novusbio.com)



[technical@novusbio.com](mailto:technical@novusbio.com)

Protocols, Publications, Related Products, Reviews, Research Tools and Images at:  
[www.novusbio.com/NB100-64843F](http://www.novusbio.com/NB100-64843F)

Updated 8/24/2023 v.20.1

Earn rewards for product  
reviews and publications.

Submit a publication at [www.novusbio.com/publications](http://www.novusbio.com/publications)

Submit a review at [www.novusbio.com/reviews/destination/NB100-64843F](http://www.novusbio.com/reviews/destination/NB100-64843F)



**NB100-64843F****Aminopeptidase N/CD13 Antibody (ER-BMDM1) [FITC]**

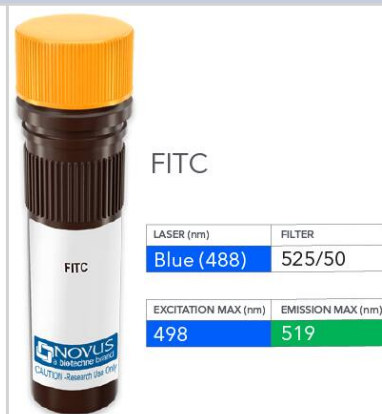
Product Information	
Unit Size	0.125 ml
Concentration	Please see the vial label for concentration. If unlisted please contact technical services.
Storage	Store at 4C in the dark.
Clonality	Monoclonal
Clone	ER-BMDM1
Preservative	0.05% Sodium Azide
Isotype	IgG2a
Conjugate	FITC
Purity	Protein G purified
Buffer	PBS

Product Description	
Host	Rat
Gene ID	290
Gene Symbol	ANPEP
Species	Mouse
Specificity/Sensitivity	NB100-64843 recognizes the murine homologue of human CD13.
Immunogen	Aminopeptidase N/CD13 Antibody (ER-BMDM1) made from Balb/c bone marrow derived macrophages.

Product Application Details	
Applications	Flow Cytometry, Immunohistochemistry, Immunohistochemistry-Frozen, Immunohistochemistry-Paraffin
Recommended Dilutions	Flow Cytometry, Immunohistochemistry, Immunohistochemistry-Paraffin, Immunohistochemistry-Frozen
Application Notes	Optimal dilution of this antibody should be experimentally determined.

**Images**

Aminopeptidase N/CD13 Antibody (ER-BMDM1) [FITC] [NB100-64843F]  
 - Vial of FITC conjugated antibody. FITC is optimally excited at 498 nm by the Blue laser (488 nm) and has an emission maximum of 519 nm.





### **Novus Biologicals USA**

10730 E. Briarwood Avenue  
Centennial, CO 80112  
USA

Phone: 303.730.1950  
Toll Free: 1.888.506.6887  
Fax: 303.730.1966  
novus@novusbio.com

### **Bio-Techne Canada**

21 Canmotor Ave  
Toronto, ON M8Z 4E6  
Canada

Phone: 905.827.6400  
Toll Free: 855.668.8722  
Fax: 905.827.6402  
canada.inquires@bio-techne.com

### **Bio-Techne Ltd**

19 Barton Lane  
Abingdon Science Park  
Abingdon, OX14 3NB, United Kingdom

Phone: (44) (0) 1235 529449  
Free Phone: 0800 37 34 15  
Fax: (44) (0) 1235 533420  
info.EMEA@bio-techne.com

### **General Contact Information**

www.novusbio.com  
Technical Support: technical@novusbio.com  
Orders: orders@novusbio.com  
General: novus@novusbio.com

### **Products Related to NB100-64843F**

---

NBP2-33855PEP	Aminopeptidase N/CD13 Recombinant Protein Antigen
210-TA-005	TNF-alpha [Unconjugated]
3815-ZN-010	Aminopeptidase N/CD13 [Unconjugated]
DC140	CD14 [HRP]

---

### **Limitations**

This product is for research use only and is not approved for use in humans or in clinical diagnosis. Primary Antibodies are guaranteed for 1 year from date of receipt.

For more information on our 100% guarantee, please visit [www.novusbio.com/guarantee](http://www.novusbio.com/guarantee)

Earn gift cards/discounts by submitting a review: [www.novusbio.com/reviews/submit/NB100-64843F](http://www.novusbio.com/reviews/submit/NB100-64843F)

Earn gift cards/discounts by submitting a publication using this product:  
[www.novusbio.com/publications](http://www.novusbio.com/publications)

