

# Product Datasheet

## CD44 Antibody (5035-41.1D) [FITC] NB100-63801-100ug

Unit Size: 100 ug

Store at 4C short term. Aliquot and store at -20C long term. Avoid freeze-thaw cycles.

[www.novusbio.com](http://www.novusbio.com)



[technical@novusbio.com](mailto:technical@novusbio.com)

Protocols, Publications, Related Products, Reviews, Research Tools and Images at:  
[www.novusbio.com/NB100-63801](http://www.novusbio.com/NB100-63801)

Updated 10/23/2024 v.20.1

Earn rewards for product  
reviews and publications.

Submit a publication at [www.novusbio.com/publications](http://www.novusbio.com/publications)

Submit a review at [www.novusbio.com/reviews/destination/NB100-63801](http://www.novusbio.com/reviews/destination/NB100-63801)



**NB100-63801-100ug**

CD44 Antibody (5035-41.1D) [FITC]

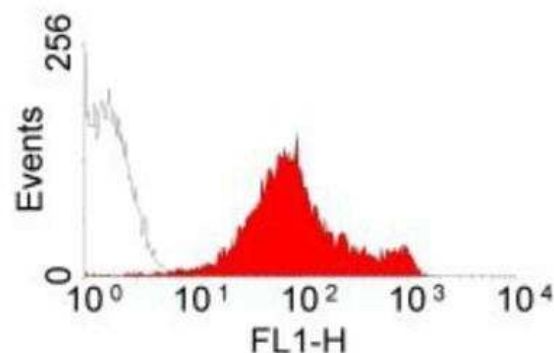
Product Information	
Unit Size	100 ug
Concentration	0.1 mg/ml
Storage	Store at 4C short term. Aliquot and store at -20C long term. Avoid freeze-thaw cycles.
Clonality	Monoclonal
Clone	5035-41.1D
Preservative	0.09% Sodium Azide
Isotype	IgG1
Conjugate	FITC
Purity	Protein G purified
Buffer	PBS

Product Description	
Host	Mouse
Gene ID	960
Gene Symbol	CD44
Species	Mouse
Reactivity Notes	Please note that this antibody is reactive to Mouse and derived from the same host, Mouse. Additional Mouse on Mouse blocking steps may be required for IHC and ICC experiments. Please contact Technical Support for more information. Human reactivity reported in scientific literature (PMID:32901011)
Marker	Cell Membrane Marker
Specificity/Sensitivity	This recognizes the following strains of mice:- C57BL/6, C57BL/10, C57/L, C58A, AKR, 129, SJL, NZB, C3H, CE, CBA/H.
Immunogen	Spleen cells from B6PL-Ly-2a / Ly-3a B6-Ly-1a mice

Product Application Details	
Applications	Flow Cytometry
Recommended Dilutions	Flow Cytometry 1:10-1:1000
Application Notes	For Flow Cytometry: Use 10 ul of the suggested working dilution to label 10 <sup>6</sup> cells or 100 ul whole blood.

**Images**

Flow Cytometry: CD44 Antibody (5035-41.1D) [FITC] [NB100-63801] - Staining of mouse spleen cells with MOUSE ANTI MOUSE CD44:FITC





### Novus Biologicals USA

10730 E. Briarwood Avenue  
Centennial, CO 80112  
USA  
Phone: 303.730.1950  
Toll Free: 1.888.506.6887  
Fax: 303.730.1966  
nb-customerservice@bio-techne.com

### Bio-Techne Canada

21 Canmotor Ave  
Toronto, ON M8Z 4E6  
Canada  
Phone: 905.827.6400  
Toll Free: 855.668.8722  
Fax: 905.827.6402  
canada.inquires@bio-techne.com

### Bio-Techne Ltd

19 Barton Lane  
Abingdon Science Park  
Abingdon, OX14 3NB, United Kingdom  
Phone: (44) (0) 1235 529449  
Free Phone: 0800 37 34 15  
Fax: (44) (0) 1235 533420  
info.EMEA@bio-techne.com

### General Contact Information

www.novusbio.com  
Technical Support: nb-technical@bio-techne.com  
Orders: nb-customerservice@bio-techne.com  
General: novus@novusbio.com

### Products Related to NB100-63801-100ug

---

NBP1-96849	Mouse IgG1 Isotype Control (MG1) [FITC]
NBP1-84578PEP	CD44 Recombinant Protein Antigen
210-TA-005	TNF-alpha [Unconjugated]
3660-CD-050	CD44 [Unconjugated]

---

### Limitations

This product is for research use only and is not approved for use in humans or in clinical diagnosis. Primary Antibodies are guaranteed for 1 year from date of receipt.

For more information on our 100% guarantee, please visit [www.novusbio.com/guarantee](http://www.novusbio.com/guarantee)

Earn gift cards/discounts by submitting a review: [www.novusbio.com/reviews/submit/NB100-63801](http://www.novusbio.com/reviews/submit/NB100-63801)

Earn gift cards/discounts by submitting a publication using this product:

[www.novusbio.com/publications](http://www.novusbio.com/publications)

