

Product Datasheet

Integrin beta 1/CD29 Antibody (12G10) [Alexa Fluor® 488] NB100-63255AF488

Unit Size: 0.1 ml

Store at 4C in the dark.

www.novusbio.com



technical@novusbio.com

Protocols, Publications, Related Products, Reviews, Research Tools and Images at:
www.novusbio.com/NB100-63255AF488

Updated 10/23/2024 v.20.1

Earn rewards for product
reviews and publications.

Submit a publication at www.novusbio.com/publications

Submit a review at www.novusbio.com/reviews/destination/NB100-63255AF488



NB100-63255AF488

Integrin beta 1/CD29 Antibody (12G10) [Alexa Fluor® 488]

| Product Information | |
|---------------------|---------------------------------------------------------------------------------------------|
| Unit Size | 0.1 ml |
| Concentration | Please see the vial label for concentration. If unlisted please contact technical services. |
| Storage | Store at 4C in the dark. |
| Clonality | Monoclonal |
| Clone | 12G10 |
| Preservative | 0.05% Sodium Azide |
| Isotype | IgG1 |
| Conjugate | Alexa Fluor 488 |
| Purity | Protein G purified |
| Buffer | 50mM Sodium Borate |

| Product Description | |
|-------------------------|----------------------------------------------------------------------------------------------------------------------------------------------------------------------------------------------------------------------------------------------------------------------------------------------------------------------------------------------------------------------------------------------------------------------------------------------------------------------------------------------------------------------------------------------------------------------------------------------------------------------------------------------------------------------------------------------------------------------------------------------------------------------------------------------------------------------------------------------------------------------------------------------------------------------------------------------------------------------------------------------------------------------------------------------------------------------------------------------------------------------------------------------------------------------------------------------------------------------------------------------------------------------------------------------------------------------------------------------------|
| Host | Mouse |
| Gene ID | 3688 |
| Gene Symbol | ITGB1 |
| Species | Human |
| Marker | Stem Cell Marker |
| Specificity/Sensitivity | NB100-63255 recognises the human beta1 integrin. This has been shown to bind to a ligand induced binding site, binding being increased in the presence of fibronectin ligand. This also enhances alpha 5 - beta 1 - fibronectin interactions. |
| Immunogen | Purified human beta1 integrin preparation from HT1080 fibrosarcoma cell extract |
| Notes | Alexa Fluor (R) products are provided under an intellectual property license from Life Technologies Corporation. The purchase of this product conveys to the buyer the non-transferable right to use the purchased product and components of the product only in research conducted by the buyer (whether the buyer is an academic or for-profit entity). The sale of this product is expressly conditioned on the buyer not using the product or its components, or any materials made using the product or its components, in any activity to generate revenue, which may include, but is not limited to use of the product or its components: (i) in manufacturing; (ii) to provide a service, information, or data in return for payment; (iii) for therapeutic, diagnostic or prophylactic purposes; or (iv) for resale, regardless of whether they are resold for use in research. For information on purchasing a license to this product for purposes other than as described above, contact Life Technologies Corporation, 5791 Van Allen Way, Carlsbad, CA 92008 USA or outlicensing@lifetech.com . This conjugate is made on demand. Actual recovery may vary from the stated volume of this product. The volume will be greater than or equal to the unit size stated on the datasheet. |

| Product Application Details | |
|-----------------------------|-----------------------------------------------------------------------------------------------------------------------------------------------------|
| Applications | Western Blot, ELISA, Flow Cytometry, Immunocytochemistry/Immunofluorescence, Immunohistochemistry, Immunohistochemistry-Frozen, Immunoprecipitation |

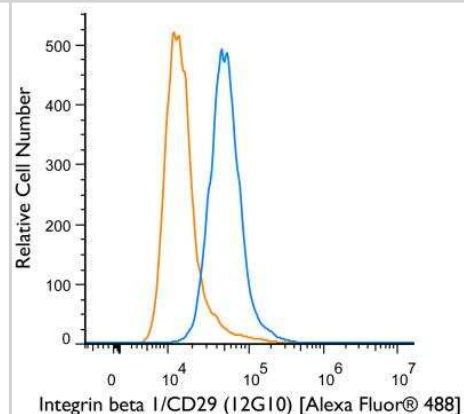


Recommended Dilutions

Western Blot, Flow Cytometry, ELISA, Immunohistochemistry, Immunocytochemistry/ Immunofluorescence, Immunoprecipitation, Immunohistochemistry-Frozen

Images

Flow Cytometry: Integrin beta 1/CD29 Antibody (12G10) [Alexa Fluor 488] [NB100-63255AF488] - A cell surface stain was performed on A549 cells with Integrin beta 1/CD29 (12G10) antibody NB100-63255AF488 (blue) and a matched isotype control NBP1-97005AF488 (orange). Cells were incubated in an antibody dilution of 5 $\mu\text{g}/\text{mL}$ for 20 minutes at room temperature. Both antibodies were conjugated to Alexa Fluor 488.





Novus Biologicals USA

10730 E. Briarwood Avenue
Centennial, CO 80112
USA
Phone: 303.730.1950
Toll Free: 1.888.506.6887
Fax: 303.730.1966
nb-customerservice@bio-techne.com

Bio-Techne Canada

21 Canmotor Ave
Toronto, ON M8Z 4E6
Canada
Phone: 905.827.6400
Toll Free: 855.668.8722
Fax: 905.827.6402
canada.inquires@bio-techne.com

Bio-Techne Ltd

19 Barton Lane
Abingdon Science Park
Abingdon, OX14 3NB, United Kingdom
Phone: (44) (0) 1235 529449
Free Phone: 0800 37 34 15
Fax: (44) (0) 1235 533420
info.EMEA@bio-techne.com

General Contact Information

www.novusbio.com
Technical Support: nb-technical@bio-techne.com
Orders: nb-customerservice@bio-techne.com
General: novus@novusbio.com

Products Related to NB100-63255AF488

| | |
|------------------|----------------------------------------------------------|
| DDXCM01A488 | Mouse IgG1 Isotype Control [Alexa Fluor® 488] |
| NB100-63255AF647 | Integrin beta 1/CD29 Antibody (12G10) [Alexa Fluor® 647] |
| NBP2-59570-50ug | Recombinant Human Integrin beta 1/CD29 His Protein |
| 210-TA-005 | TNF-alpha [Unconjugated] |

Limitations

This product is for research use only and is not approved for use in humans or in clinical diagnosis. Primary Antibodies are guaranteed for 1 year from date of receipt.

For more information on our 100% guarantee, please visit www.novusbio.com/guarantee

Earn gift cards/discounts by submitting a review: www.novusbio.com/reviews/submit/NB100-63255AF488

Earn gift cards/discounts by submitting a publication using this product:
www.novusbio.com/publications

