

Product Datasheet

KAT3B/p300 Antibody (RW105) [PE] NB100-616PE-0.1ml

Unit Size: 0.1 ml

Store at 4C in the dark.

www.novusbio.com



technical@novusbio.com

Protocols, Publications, Related Products, Reviews, Research Tools and Images at:
www.novusbio.com/NB100-616PE

Updated 10/23/2024 v.20.1

Earn rewards for product
reviews and publications.

Submit a publication at www.novusbio.com/publications

Submit a review at www.novusbio.com/reviews/destination/NB100-616PE



NB100-616PE-0.1ml

KAT3B/p300 Antibody (RW105) [PE]

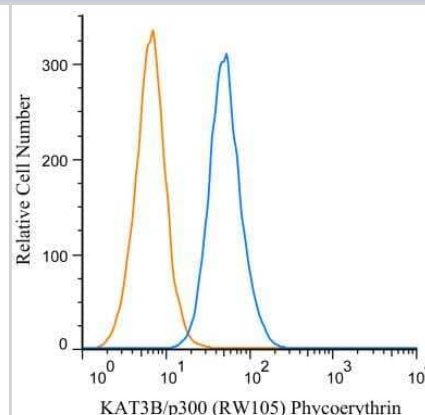
Product Information	
Unit Size	0.1 ml
Concentration	Please see the vial label for concentration. If unlisted please contact technical services.
Storage	Store at 4C in the dark.
Clonality	Monoclonal
Clone	RW105
Preservative	0.05% Sodium Azide
Isotype	IgG1 Kappa
Conjugate	PE
Purity	Protein G purified
Buffer	PBS

Product Description	
Host	Mouse
Gene ID	2033
Gene Symbol	EP300
Species	Human, Mouse, Rat, Mustelid, Primate
Reactivity Notes	Mink.
Specificity/Sensitivity	This is specific for p300 protein. This recognizes residues 1921-2023.
Immunogen	Fusion protein containing residues 1572-2371 of human KAT3B/p300. [UniProt# Q0947]

Product Application Details	
Applications	Western Blot, Electron Microscopy, Flow Cytometry, Flow (Intracellular), Immunocytochemistry/ Immunofluorescence, In vitro assay, Immunoprecipitation, Chromatin Immunoprecipitation (ChIP), Knockdown Validated
Recommended Dilutions	Western Blot, Flow Cytometry, Immunocytochemistry/ Immunofluorescence, Immunoprecipitation, In vitro assay, Electron Microscopy, Flow (Intracellular), Chromatin Immunoprecipitation (ChIP), Knockdown Validated
Application Notes	Optimal dilution of this antibody should be experimentally determined.

Images

Flow Cytometry: KAT3B/p300 Antibody (RW105) [PE] [NB100-616PE] - An intracellular stain was performed on RAW 246.7 cells with KAT3B/p300 antibody (RW105) NB100-616PE (blue) and a matched isotype control NBP2-27287PE (orange). Cells were fixed with 4% PFA and then permeabilized with 0.1% saponin. Cells were incubated in an antibody dilution of 2 ug/mL for 30 minutes at room temperature. Both antibodies were conjugated to Phycoerythrin.



**Novus Biologicals USA**

10730 E. Briarwood Avenue
Centennial, CO 80112
USA
Phone: 303.730.1950
Toll Free: 1.888.506.6887
Fax: 303.730.1966
nb-customerservice@bio-techne.com

Bio-Techne Canada

21 Canmotor Ave
Toronto, ON M8Z 4E6
Canada
Phone: 905.827.6400
Toll Free: 855.668.8722
Fax: 905.827.6402
canada.inquires@bio-techne.com

Bio-Techne Ltd

19 Barton Lane
Abingdon Science Park
Abingdon, OX14 3NB, United Kingdom
Phone: (44) (0) 1235 529449
Free Phone: 0800 37 34 15
Fax: (44) (0) 1235 533420
info.EMEA@bio-techne.com

General Contact Information

www.novusbio.com
Technical Support: nb-technical@bio-techne.com
Orders: nb-customerservice@bio-techne.com
General: novus@novusbio.com

Products Related to NB100-616PE-0.1ml

NBP1-43319PE-0.5ml	Mouse IgG1 Kappa Isotype Control (P3.6.2.8.1) [PE]
NB100-616APC-0.1ml	KAT3B/p300 Antibody (RW105) [Allophycocyanin]
H00002033-Q01-10ug	Recombinant Human KAT3B/p300 GST (N-Term) Protein
NBP2-29661-1Kit	Human, Mouse, Rat RelA/NFkB p65 ELISA Kit (Colorimetric)

Limitations

This product is for research use only and is not approved for use in humans or in clinical diagnosis. Primary Antibodies are guaranteed for 1 year from date of receipt.

For more information on our 100% guarantee, please visit www.novusbio.com/guarantee

Earn gift cards/discounts by submitting a review: www.novusbio.com/reviews/submit/NB100-616PE

Earn gift cards/discounts by submitting a publication using this product:
www.novusbio.com/publications

