

Product Datasheet

Caveolin-1 Antibody (7C8) [Allophycocyanin] NB100-615APC

Unit Size: 0.1 ml

Store at 4C in the dark.

www.novusbio.com



technical@novusbio.com

Protocols, Publications, Related Products, Reviews, Research Tools and Images at:
www.novusbio.com/NB100-615APC

Updated 10/23/2024 v.20.1

Earn rewards for product
reviews and publications.

Submit a publication at www.novusbio.com/publications

Submit a review at www.novusbio.com/reviews/destination/NB100-615APC



NB100-615APC

Caveolin-1 Antibody (7C8) [Allophycocyanin]

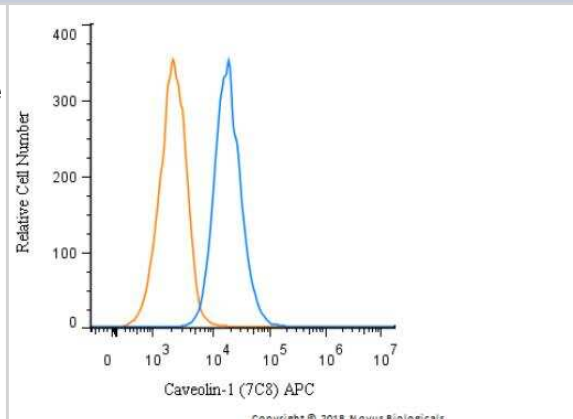
Product Information	
Unit Size	0.1 ml
Concentration	Please see the vial label for concentration. If unlisted please contact technical services.
Storage	Store at 4C in the dark.
Clonality	Monoclonal
Clone	7C8
Preservative	0.05% Sodium Azide
Isotype	IgG2b
Conjugate	Allophycocyanin
Purity	Protein A purified
Buffer	PBS

Product Description	
Host	Mouse
Gene ID	857
Gene Symbol	CAV1
Species	Human, Mouse, Rat, Sheep
Marker	Caveolae Marker, Endosome Marker
Specificity/Sensitivity	This is specific for caveolin alpha and beta proteins.
Immunogen	Intracellular membrane protein-containing vesicles (containing GLUT4) from rat adipocytes

Product Application Details	
Applications	Western Blot, Flow Cytometry, Immunoblotting, Immunocytochemistry/Immunofluorescence, Immunohistochemistry, Immunohistochemistry-Frozen, Immunohistochemistry-Paraffin, Immunoprecipitation
Recommended Dilutions	Western Blot, Flow Cytometry, Immunohistochemistry, Immunocytochemistry/Immunofluorescence, Immunoprecipitation, Immunohistochemistry-Paraffin, Immunohistochemistry-Frozen, Immunoblotting
Application Notes	Optimal dilution of this antibody should be experimentally determined.

Images

Flow Cytometry: Caveolin-1 Antibody (7C8) [Allophycocyanin] [NB100-615APC] - An intracellular stain was performed on HeLa cells with Caveolin-1 Antibody (7C8) NB100-615APC (blue) and a matched isotype control (orange). Cells were fixed with 4% PFA and then permeabilized with 0.1% saponin. Cells were incubated in an antibody dilution of 1 ug/mL for 30 minutes at room temperature. Both antibodies were conjugated to allophycocyanin.





Novus Biologicals USA

10730 E. Briarwood Avenue
Centennial, CO 80112
USA
Phone: 303.730.1950
Toll Free: 1.888.506.6887
Fax: 303.730.1966
nb-customerservice@bio-techne.com

Bio-Techne Canada

21 Canmotor Ave
Toronto, ON M8Z 4E6
Canada
Phone: 905.827.6400
Toll Free: 855.668.8722
Fax: 905.827.6402
canada.inquires@bio-techne.com

Bio-Techne Ltd

19 Barton Lane
Abingdon Science Park
Abingdon, OX14 3NB, United Kingdom
Phone: (44) (0) 1235 529449
Free Phone: 0800 37 34 15
Fax: (44) (0) 1235 533420
info.EMEA@bio-techne.com

General Contact Information

www.novusbio.com
Technical Support: nb-technical@bio-techne.com
Orders: nb-customerservice@bio-techne.com
General: novus@novusbio.com

Products Related to NB100-615APC

IC0041A	Mouse IgG2b Isotype Control (133303) [Allophycocyanin]
NB100-615G	Caveolin-1 Antibody (7C8) [DyLight 488]
H00000857-P01-10ug	Recombinant Human Caveolin-1 GST (N-Term) Protein
236-EG-200	EGF [Unconjugated]

Limitations

This product is for research use only and is not approved for use in humans or in clinical diagnosis. Primary Antibodies are guaranteed for 1 year from date of receipt.

For more information on our 100% guarantee, please visit www.novusbio.com/guarantee

Earn gift cards/discounts by submitting a review: www.novusbio.com/reviews/submit/NB100-615APC

Earn gift cards/discounts by submitting a publication using this product:
www.novusbio.com/publications

