

Product Datasheet

Caveolin-1 Antibody (7C8) [Alexa Fluor® 488] NB100-615AF488

Unit Size: 0.1 ml

Store at 4C in the dark.

www.novusbio.com



technical@novusbio.com

Publications: 1

Protocols, Publications, Related Products, Reviews, Research Tools and Images at:
www.novusbio.com/NB100-615AF488

Updated 10/23/2024 v.20.1

Earn rewards for product
reviews and publications.

Submit a publication at www.novusbio.com/publications

Submit a review at www.novusbio.com/reviews/destination/NB100-615AF488



NB100-615AF488

Caveolin-1 Antibody (7C8) [Alexa Fluor® 488]

Product Information	
Unit Size	0.1 ml
Concentration	Please see the vial label for concentration. If unlisted please contact technical services.
Storage	Store at 4C in the dark.
Clonality	Monoclonal
Clone	7C8
Preservative	0.05% Sodium Azide
Isotype	IgG2b
Conjugate	Alexa Fluor 488
Purity	Protein A purified
Buffer	50mM Sodium Borate

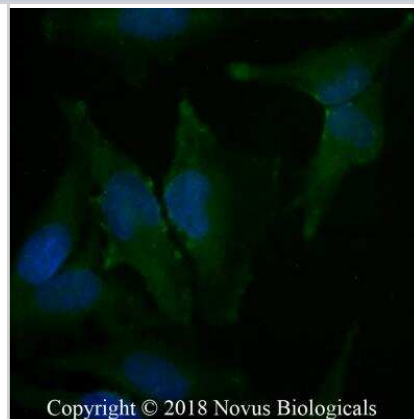
Product Description	
Host	Mouse
Gene ID	857
Gene Symbol	CAV1
Species	Human, Mouse, Rat, Sheep
Marker	Caveolae Marker, Endosome Marker
Specificity/Sensitivity	This is specific for caveolin alpha and beta proteins.
Immunogen	Intracellular membrane protein-containing vesicles (containing GLUT4) from rat adipocytes
Notes	Alexa Fluor (R) products are provided under an intellectual property license from Life Technologies Corporation. The purchase of this product conveys to the buyer the non-transferable right to use the purchased product and components of the product only in research conducted by the buyer (whether the buyer is an academic or for-profit entity). The sale of this product is expressly conditioned on the buyer not using the product or its components, or any materials made using the product or its components, in any activity to generate revenue, which may include, but is not limited to use of the product or its components: (i) in manufacturing; (ii) to provide a service, information, or data in return for payment; (iii) for therapeutic, diagnostic or prophylactic purposes; or (iv) for resale, regardless of whether they are resold for use in research. For information on purchasing a license to this product for purposes other than as described above, contact Life Technologies Corporation, 5791 Van Allen Way, Carlsbad, CA 92008 USA or outlicensing@lifetech.com . This conjugate is made on demand. Actual recovery may vary from the stated volume of this product. The volume will be greater than or equal to the unit size stated on the datasheet.

Product Application Details	
Applications	Western Blot, Flow Cytometry, Immunoblotting, Immunocytochemistry/Immunofluorescence, Immunohistochemistry, Immunohistochemistry-Frozen, Immunohistochemistry-Paraffin, Immunoprecipitation
Recommended Dilutions	Western Blot, Flow Cytometry, Immunohistochemistry, Immunocytochemistry/Immunofluorescence, Immunoprecipitation, Immunohistochemistry-Paraffin, Immunohistochemistry-Frozen, Immunoblotting
Application Notes	Optimal dilution of this antibody should be experimentally determined.



Images

Immunocytochemistry/Immunofluorescence: Caveolin-1 Antibody (7C8) [Alexa Fluor® 488] [NB100-615AF488] - HeLa cells were fixed for 10 minutes using 10% formalin and then permeabilized for 5 minutes using 1X PBS + 0.05% Triton-X100. The cells were incubated with anti-Caveolin-1 [7C8] conjugated to Alexa Fluor 488 [NB100-615AF488] at 20 ug/ml for 1 hour at room temperature. Nuclei were counterstained with DAPI (Blue). Cells were imaged using a 40X objective.



Publications

Li Z, Scott MJ, Fan EK et al. Tissue damage negatively regulates LPS-induced macrophage necroptosis Cell Death Differ. 2016-09-01 [PMID: 26943325] (WB, ICC/IF, Mouse)

Details:

Citation used the Alexa Fluor 488 format of this antibody.



Novus Biologicals USA

10730 E. Briarwood Avenue
Centennial, CO 80112
USA
Phone: 303.730.1950
Toll Free: 1.888.506.6887
Fax: 303.730.1966
nb-customerservice@bio-techne.com

Bio-Techne Canada

21 Canmotor Ave
Toronto, ON M8Z 4E6
Canada
Phone: 905.827.6400
Toll Free: 855.668.8722
Fax: 905.827.6402
canada.inquires@bio-techne.com

Bio-Techne Ltd

19 Barton Lane
Abingdon Science Park
Abingdon, OX14 3NB, United Kingdom
Phone: (44) (0) 1235 529449
Free Phone: 0800 37 34 15
Fax: (44) (0) 1235 533420
info.EMEA@bio-techne.com

General Contact Information

www.novusbio.com
Technical Support: nb-technical@bio-techne.com
Orders: nb-customerservice@bio-techne.com
General: novus@novusbio.com

Products Related to NB100-615AF488

IC0041G	Mouse IgG2b Isotype Control (133303) [Alexa Fluor® 488]
NB100-615AF647	Caveolin-1 Antibody (7C8) [Alexa Fluor® 647]
H00000857-P01-10ug	Recombinant Human Caveolin-1 GST (N-Term) Protein
236-EG-200	EGF [Unconjugated]

Limitations

This product is for research use only and is not approved for use in humans or in clinical diagnosis. Primary Antibodies are guaranteed for 1 year from date of receipt.

For more information on our 100% guarantee, please visit www.novusbio.com/guarantee

Earn gift cards/discounts by submitting a review: www.novusbio.com/reviews/submit/NB100-615AF488

Earn gift cards/discounts by submitting a publication using this product:
www.novusbio.com/publications

