

Product Datasheet

CPSF6 Antibody NB100-61596

Unit Size: 0.1 ml

Store at 4C. Do not freeze.

www.novusbio.com



technical@novusbio.com

Publications: 3

Protocols, Publications, Related Products, Reviews, Research Tools and Images at:
www.novusbio.com/NB100-61596

Updated 9/9/2025 v.20.1

Earn rewards for product
reviews and publications.

Submit a publication at www.novusbio.com/publications

Submit a review at www.novusbio.com/reviews/destination/NB100-61596



NB100-61596

CPSF6 Antibody

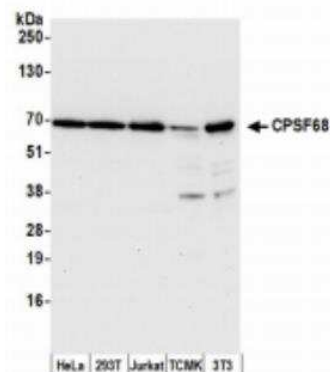
Product Information	
Unit Size	0.1 ml
Concentration	0.2 mg/ml
Storage	Store at 4C. Do not freeze.
Clonality	Polyclonal
Preservative	0.09% Sodium Azide
Isotype	IgG
Purity	Immunogen affinity purified
Buffer	TBS and 0.1% BSA

Product Description	
Description	Novus Biologicals Rabbit CPSF6 Antibody (NB100-61596) is a polyclonal antibody validated for use in IHC, WB, ICC/IF, Simple Western and IP. Anti-CPSF6 Antibody: Cited in 3 publications. All Novus Biologicals antibodies are covered by our 100% guarantee.
Host	Rabbit
Gene ID	11052
Gene Symbol	CPSF6
Species	Human, Mouse
Reactivity Notes	Orangutan (100%), X. laevis (100%).
Immunogen	The immunogen recognized by this antibody maps to a region between residue 1 and 50 of human cleavage and polyadenylation specific factor 6, 68kDa using the numbering given in entry NP_008938.1 (GeneID 11052).

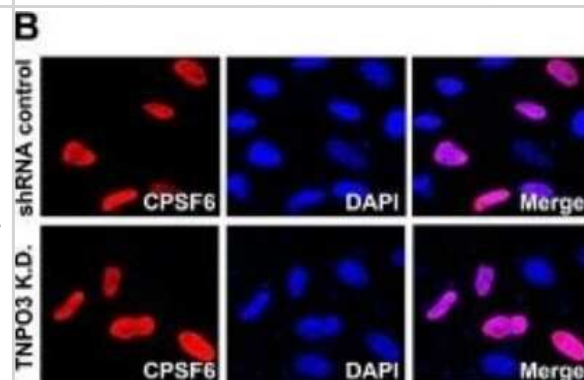
Product Application Details	
Applications	Western Blot, Simple Western, Immunohistochemistry-Paraffin, Immunocytochemistry/ Immunofluorescence, Immunohistochemistry, Immunoprecipitation
Recommended Dilutions	Western Blot 1:2000-1:10000, Simple Western 1:40, Immunohistochemistry 1:200 -1:1000, Immunocytochemistry/ Immunofluorescence 1:50 to 1:500, Immunoprecipitation 2-10 ug/mg lysate, Immunohistochemistry-Paraffin 1:200 - 1:1000
Application Notes	Use in ICC/IF was reported in the scientific literature (PMID: 23622145). In Simple Western only 10 - 15 uL of the recommended dilution is used per data point. See Simple Western Antibody Database for Simple Western validation: Tested in HeLa lysate 0.5 mg/mL, separated by Size, antibody dilution of 1:40, apparent MW was 57 kDa. Separated by Size-Wes, Sally Sue/Peggy Sue. Epitope retrieval with citrate buffer pH 6.0 is recommended for FFPE tissue sections.

Images

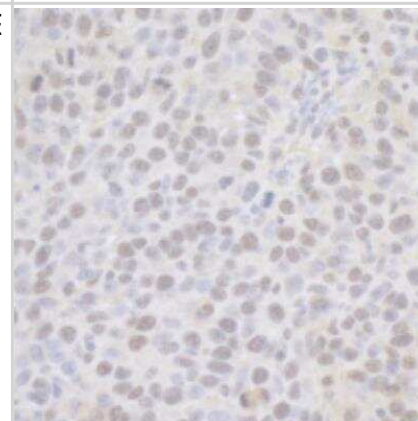
Western Blot: CPSF6 Antibody [NB100-61596] - Whole cell lysate (15 ug) from HeLa, 293T, Jurkat, mouse TCMK-1, and mouse NIH3T3 cells prepared using NETN lysis buffer. Antibody: Affinity purified rabbit antiCPSF68 antibody used for WB at 0.1 ug/ml. Detection: Chemiluminescence with an exposure time of 10 seconds.



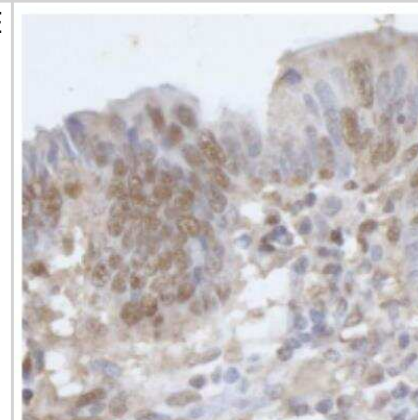
Immunocytochemistry/Immunofluorescence: CPSF6 Antibody [NB100-61596] - TNPO3 K.D. and shRNA control HeLa cells were transiently transfected using constructs expressing FLAG-tagged CPSF6. Twenty-four hours post-transfection cells were fixed and immunostained using anti-FLAG antibodies. The nuclear compartment was labeled using DAPI. Image collected and cropped by CiteAb from the following publication ([//pubmed.ncbi.nlm.nih.gov/23622145/](https://pubmed.ncbi.nlm.nih.gov/23622145/)) licensed under a CC-BY license.



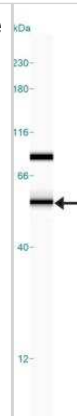
Immunohistochemistry-Paraffin: CPSF6 Antibody [NB100-61596] - FFPE section of mouse renal cell carcinoma. Antibody: Affinity purified rabbit anti-CPSF68 used at a dilution of 1:200 (1ug/ml). Detection: DAB



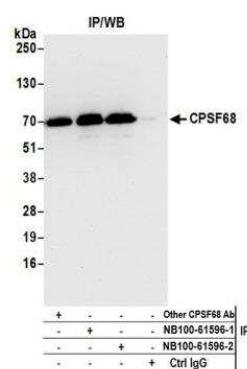
Immunohistochemistry-Paraffin: CPSF6 Antibody [NB100-61596] - FFPE section of human colon carcinoma. Antibody: Affinity purified rabbit anti-CPSF68 used at a dilution of 1:200 (1ug/ml). Detection: DAB



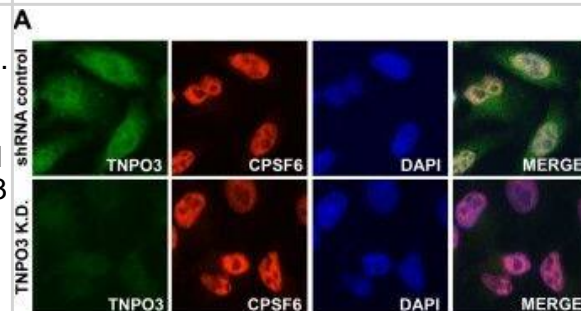
Simple Western: CPSF6 Antibody [NB100-61596] - Simple Western lane view shows a specific band for CPSF6 in 0.5 mg/ml of HeLa lysate. This experiment was performed under reducing conditions using the 12-230 kDa separation system.



Immunoprecipitation: CPSF6 Antibody [NB100-61596] - Detection of human CPSF68 by western blot of immunoprecipitates. Samples: Whole cell lysate (1.0 mg per IP reaction; 20% of IP loaded) from HeLa cells prepared using NETN lysis buffer. Antibodies: Affinity purified rabbit anti-CPSF68 antibody NB100-61596 (lot NB100-61596-2) used for IP at 3 ug per reaction. CPSF68 was also immunoprecipitated by a previous lot of this antibody (lot NB100-61596-1) and another rabbit anti-CPSF68 antibody. For blotting immunoprecipitated CPSF68, NB100-61596 was used at 0.4 ug/ml. Detection: Chemiluminescence with an exposure time of 10 seconds.



Immunocytochemistry/ Immunofluorescence: CPSF6 Antibody [NB100-61596] - Depletion of TNPO3 does not change the localization of CPSF6. (A) TNPO3 K.D. & shRNA control HeLa cells were fixed & stained using specific antibodies against CPSF6 (red), ASF/SF2 (red) & TNPO3 (green), as described in Methods. The nuclear compartment was labeled using DAPI. Image quantification is shown in Additional file 1. (B) TNPO3 K.D. & shRNA control HeLa cells were transiently transfected using constructs expressing FLAG-tagged CPSF6 or ASF/SF2. Twenty-four hours post-transfection cells were fixed & immunostained using anti-FLAG antibodies. The nuclear compartment was labeled using DAPI. Image quantification is shown in Additional file 2. Similar results were obtained in three independent experiments & a representative experiment is shown. Image collected & cropped by CiteAb from the following publication (<https://retrovirology.biomedcentral.com/articles/10.1186/1742-4690-10-46>), licensed under a CC-BY license. Not internally tested by Novus Biologicals.



Publications

Saito A, Henning MS, Serrao E et al. The capsid-CPSF6 interaction is dispensable for HIV-1 replication in primary cells but is selected during virus passage in vivo. *J. Virol.* 2016-06-15 [PMID: 27307565] (Human)

Henning MS, Dubose BN, Burse MJ, Yamashita M. In vivo functions of CPSF6 for HIV-1 as revealed by HIV-1 capsid evolution in HLA-B27-positive subjects. *PLoS Pathog.* 2014-01-01 [PMID: 24415937] (WB, Human)

Fricke T, Valle-Casuso JC, White TE et al. The ability of TNPO3-depleted cells to inhibit HIV-1 infection requires CPSF6. *Retrovirology* 2013-04-26 [PMID: 23622145] (ICC/IF, Human)



Novus Biologicals USA

10730 E. Briarwood Avenue
Centennial, CO 80112
USA
Phone: 303.730.1950
Toll Free: 1.888.506.6887
Fax: 303.730.1966
nb-customerservice@bio-techne.com

Bio-Techne Canada

21 Canmotor Ave
Toronto, ON M8Z 4E6
Canada
Phone: 905.827.6400
Toll Free: 855.668.8722
Fax: 905.827.6402
canada.inquires@bio-techne.com

Bio-Techne Ltd

19 Barton Lane
Abingdon Science Park
Abingdon, OX14 3NB, United Kingdom
Phone: (44) (0) 1235 529449
Free Phone: 0800 37 34 15
Fax: (44) (0) 1235 533420
info.EMEA@bio-techne.com

General Contact Information

www.novusbio.com
Technical Support: nb-technical@bio-techne.com
Orders: nb-customerservice@bio-techne.com
General: novus@novusbio.com

Products Related to NB100-61596

NBP2-33376H	Blue Marker Antibody (6F4-F6) [HRP]
HAF008	Goat anti-Rabbit IgG Secondary Antibody [HRP]
NB7160	Goat anti-Rabbit IgG (H+L) Secondary Antibody [HRP]
NBP2-24891	Rabbit IgG Isotype Control

Limitations

This product is for research use only and is not approved for use in humans or in clinical diagnosis. Primary Antibodies are guaranteed for 1 year from date of receipt.

For more information on our 100% guarantee, please visit www.novusbio.com/guarantee

Earn gift cards/discounts by submitting a review: www.novusbio.com/reviews/submit/NB100-61596

Earn gift cards/discounts by submitting a publication using this product:
www.novusbio.com/publications

