

# Product Datasheet

## GTF3C5 Antibody NB100-60435

Unit Size: 0.1 ml

Store at 4C. Do not freeze.

[www.novusbio.com](http://www.novusbio.com)



[technical@novusbio.com](mailto:technical@novusbio.com)

Protocols, Publications, Related Products, Reviews, Research Tools and Images at:  
[www.novusbio.com/NB100-60435](http://www.novusbio.com/NB100-60435)

Updated 10/23/2024 v.20.1

Earn rewards for product  
reviews and publications.

Submit a publication at [www.novusbio.com/publications](http://www.novusbio.com/publications)

Submit a review at [www.novusbio.com/reviews/destination/NB100-60435](http://www.novusbio.com/reviews/destination/NB100-60435)



**NB100-60435**

## GTF3C5 Antibody

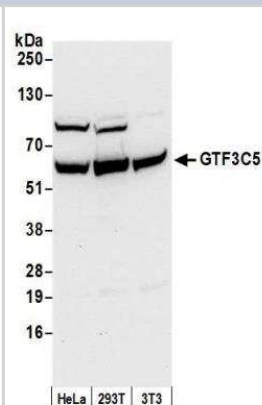
Product Information	
Unit Size	0.1 ml
Concentration	0.2 mg/ml
Storage	Store at 4C. Do not freeze.
Clonality	Polyclonal
Preservative	0.09% Sodium Azide
Isotype	IgG
Purity	Immunogen affinity purified
Buffer	TBS and 0.1% BSA

Product Description	
Host	Rabbit
Gene ID	9328
Gene Symbol	GTF3C5
Species	Human, Mouse
Immunogen	The immunogen recognized by this antibody maps to a region between residue 469 and 519 of human general transcription factor 3C polypeptide 5 (Transcription factor IIIC 63 kDa subunit) using the numbering given in entry NP_036219.1 (GeneID 9328).

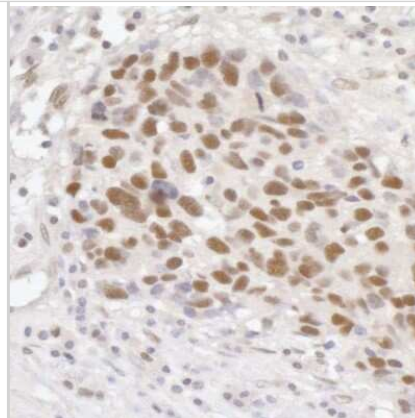
Product Application Details	
Applications	Western Blot, Immunohistochemistry, Immunohistochemistry-Paraffin, Immunoprecipitation
Recommended Dilutions	Western Blot 1:100-1:2000, Immunohistochemistry, Immunoprecipitation 1:10-1:500, Immunohistochemistry-Paraffin 1:10-1:500

**Images**

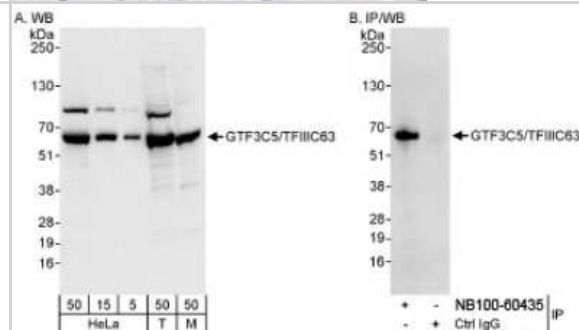
Western Blot: GTF3C5 Antibody [NB100-60435] - Detection of human and mouse GTF3C5 by western blot. Samples: Whole cell lysate (50 ug) from HeLa, HEK293T, and mouse NIH 3T3 cells prepared using NETN lysis buffer. Antibody: Affinity purified rabbit anti-GTF3C5 antibody NB100-60435 used for WB at 0.1 ug/ml. Detection: Chemiluminescence with an exposure time of 10 seconds.



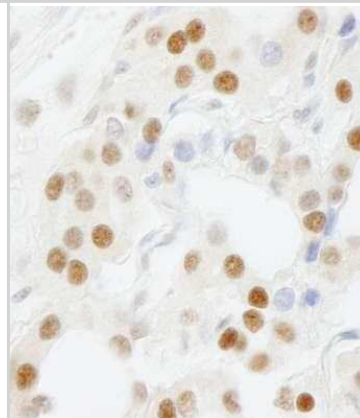
Immunohistochemistry: GTF3C5 Antibody [NB100-60435] - Detection of human GTF3C5/TFIIIC63 by immunohistochemistry. Sample: FFPE section of human breast carcinoma. Antibody: Affinity purified rabbit anti-GTF3C5/TFIIIC63 (NB100-60435). Detection: DAB



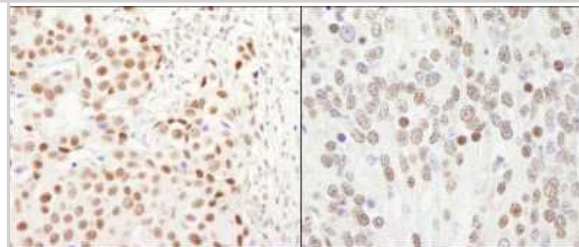
Western Blot: GTF3C5 Antibody [NB100-60435] - Whole cell lysate from HeLa (5, 15 and 50 ug for WB; 1 mg for IP, 20% of IP loaded), 293T (T; 50 ug), and mouse NIH3T3 (M; 50 ug) cells. NB100-60435 used for WB at 0.04 ug/ml (A) and 1 ug/ml (B) and used for IP at 3 ug/mg lysate.



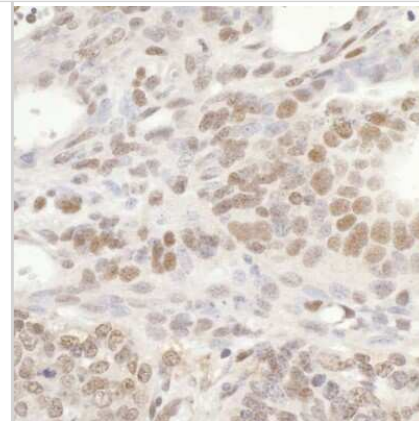
Immunohistochemistry-Paraffin: GTF3C5 Antibody [NB100-60435] - FFPE section of human thyroid carcinoma. Antibody dilution of 1:500.



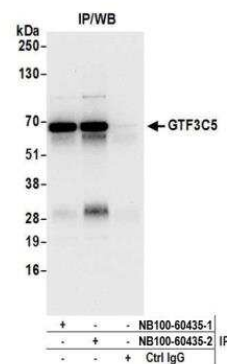
Immunohistochemistry: GTF3C5 Antibody [NB100-60435] - Sample: FFPE section of human breast carcinoma (left) and mouse teratoma (right). Antibody: Affinity purified rabbit anti-GTF3C5/TFIIIC63 used at a dilution of 1:500 (0.4ug/ml). Detection: DAB



Immunohistochemistry: GTF3C5 Antibody [NB100-60435] - Detection of mouse GTF3C5/TFIIIC63 by immunohistochemistry. Sample: FFPE section of mouse teratoma. Antibody: Affinity purified rabbit anti-GTF3C5/TFIIIC63 (NB100-60435). Detection: DAB



Immunoprecipitation: GTF3C5 Antibody [NB100-60435] - Detection of human GTF3C5 by western blot of immunoprecipitates. Samples: Whole cell lysate (0.5 or 1.0 mg per IP reaction; 20% of IP loaded) from HEK293T cells prepared using NETN lysis buffer. Antibodies: Affinity purified rabbit anti-GTF3C5 antibody NB100-60435 (lot NB100-60435-2) used for IP at 6 ug per reaction. GTF3C5 was also immunoprecipitated by a previous lot of this antibody (lot NB100-60435-1). For blotting immunoprecipitated GTF3C5, NB100-60435 was used at 0.4 ug/ml. Detection: Chemiluminescence with an exposure time of 10 seconds.





### **Novus Biologicals USA**

10730 E. Briarwood Avenue  
Centennial, CO 80112  
USA  
Phone: 303.730.1950  
Toll Free: 1.888.506.6887  
Fax: 303.730.1966  
nb-customerservice@bio-techne.com

### **Bio-Techne Canada**

21 Canmotor Ave  
Toronto, ON M8Z 4E6  
Canada  
Phone: 905.827.6400  
Toll Free: 855.668.8722  
Fax: 905.827.6402  
canada.inquires@bio-techne.com

### **Bio-Techne Ltd**

19 Barton Lane  
Abingdon Science Park  
Abingdon, OX14 3NB, United Kingdom  
Phone: (44) (0) 1235 529449  
Free Phone: 0800 37 34 15  
Fax: (44) (0) 1235 533420  
info.EMEA@bio-techne.com

### **General Contact Information**

www.novusbio.com  
Technical Support: nb-technical@bio-techne.com  
Orders: nb-customerservice@bio-techne.com  
General: novus@novusbio.com

### **Products Related to NB100-60435**

---

NBL1-11396	GTF3C5 Overexpression Lysate
HAF008	Goat anti-Rabbit IgG Secondary Antibody [HRP]
NB7160	Goat anti-Rabbit IgG (H+L) Secondary Antibody [HRP]
NBP2-24891	Rabbit IgG Isotype Control

---

### **Limitations**

This product is for research use only and is not approved for use in humans or in clinical diagnosis. Primary Antibodies are guaranteed for 1 year from date of receipt.

For more information on our 100% guarantee, please visit [www.novusbio.com/guarantee](http://www.novusbio.com/guarantee)

Earn gift cards/discounts by submitting a review: [www.novusbio.com/reviews/submit/NB100-60435](http://www.novusbio.com/reviews/submit/NB100-60435)

Earn gift cards/discounts by submitting a publication using this product:  
[www.novusbio.com/publications](http://www.novusbio.com/publications)

