

Product Datasheet

Cdc20 Antibody - BSA Free

NB100-59827

Unit Size: 100 ul

Store at 4C. Do not freeze.

www.novusbio.com



technical@novusbio.com

Publications: 2

Protocols, Publications, Related Products, Reviews, Research Tools and Images at:
www.novusbio.com/NB100-59827

Updated 2/21/2025 v.20.1

Earn rewards for product
reviews and publications.

Submit a publication at www.novusbio.com/publications

Submit a review at www.novusbio.com/reviews/destination/NB100-59827



NB100-59827

Cdc20 Antibody - BSA Free

Product Information	
Unit Size	100 ul
Concentration	1.0 mg/ml
Storage	Store at 4C. Do not freeze.
Clonality	Polyclonal
Preservative	0.09% Sodium Azide
Isotype	IgG
Purity	Immunogen affinity purified
Buffer	Tris-Citrate/Phosphate (pH 7.0 - 8.0)
Target Molecular Weight	55 kDa

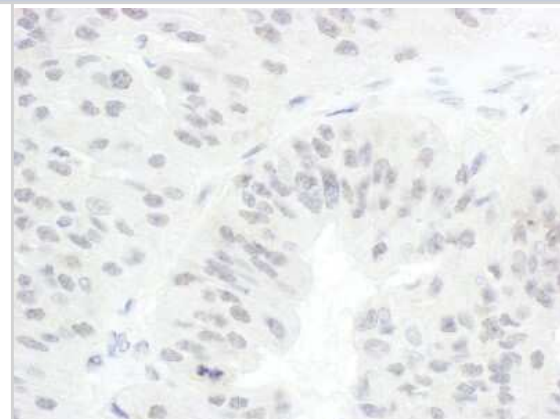
Product Description	
Host	Rabbit
Gene ID	991
Gene Symbol	CDC20
Species	Human
Immunogen	The immunogen recognized by this antibody maps to a region between residue 50 and 100 of human cell division cycle 20 using the numbering given in entry NP_001246.2 (GeneID 991).

Product Application Details	
Applications	Immunohistochemistry, Immunohistochemistry-Paraffin, Immunoprecipitation, Western Blot (Negative)
Recommended Dilutions	Immunohistochemistry 1:200- 1:1000, Immunoprecipitation 2-10 ug/mg lysate, Immunohistochemistry-Paraffin 1:200- 1:1000, Western Blot (Negative)
Application Notes	Epitope retrieval with Tris-EDTA pH9.0 is recommended.

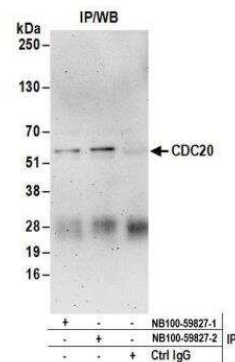


Images

Immunohistochemistry-Paraffin: Cdc20 Antibody [NB100-59827] - Section of human ovarian carcinoma. Antibody: Affinity purified rabbit anti-CDC20 used at a dilution of 1:500 (2ug/ml). Detection: DAB.



Immunoprecipitation: Cdc20 Antibody [NB100-59827] - Detection of human CDC20 by western blot of immunoprecipitates. Samples: Whole cell lysate (1 mg for IP; 20% of IP loaded) from HeLa cells. Antibodies: Affinity purified rabbit anti-CDC20 antibody NB100-59827 (lot 2) used for IP at 6 ug/mg lysate. CDC20 was also immunoprecipitated by a previous lot (lot 1) of this antibody. For blotting immunoprecipitated CDC20, NB100-59827 was used at 1 ug/ml. Detection: Chemiluminescence with an exposure time of 3 minutes.



Publications

Matsumura F, Yamakita Y, Yamashiro S et al. Myosin phosphatase-targeting subunit 1 controls chromatid segregation. *J Biol Chem* 2011-03-01 [PMID: 21252232]

Ahlskog JK, Bjork JK, Elsing AN et al. Anaphase-promoting complex/cyclosome participates in the acute response to protein-damaging stress. *Mol Cell Biol* 2010-12-01 [PMID: 20937767]



Novus Biologicals USA

10730 E. Briarwood Avenue
Centennial, CO 80112
USA
Phone: 303.730.1950
Toll Free: 1.888.506.6887
Fax: 303.730.1966
nb-customerservice@bio-techne.com

Bio-Techne Canada

21 Canmotor Ave
Toronto, ON M8Z 4E6
Canada
Phone: 905.827.6400
Toll Free: 855.668.8722
Fax: 905.827.6402
canada.inquires@bio-techne.com

Bio-Techne Ltd

19 Barton Lane
Abingdon Science Park
Abingdon, OX14 3NB, United Kingdom
Phone: (44) (0) 1235 529449
Free Phone: 0800 37 34 15
Fax: (44) (0) 1235 533420
info.EMEA@bio-techne.com

General Contact Information

www.novusbio.com
Technical Support: nb-technical@bio-techne.com
Orders: nb-customerservice@bio-techne.com
General: novus@novusbio.com

Products Related to NB100-59827

NBL1-08992	Cdc20 Overexpression Lysate
HAF008	Goat anti-Rabbit IgG Secondary Antibody [HRP]
NB7160	Goat anti-Rabbit IgG (H+L) Secondary Antibody [HRP]
NBP2-24891	Rabbit IgG Isotype Control

Limitations

This product is for research use only and is not approved for use in humans or in clinical diagnosis. Primary Antibodies are guaranteed for 1 year from date of receipt.

For more information on our 100% guarantee, please visit www.novusbio.com/guarantee

Earn gift cards/discounts by submitting a review: www.novusbio.com/reviews/submit/NB100-59827

Earn gift cards/discounts by submitting a publication using this product:
www.novusbio.com/publications

