

Product Datasheet

EGFR Antibody - BSA Free

NB100-596

Unit Size: 100 ul

Store at 4C. Do not freeze.

www.novusbio.com



technical@novusbio.com

Publications: 1

Protocols, Publications, Related Products, Reviews, Research Tools and Images at:
www.novusbio.com/NB100-596

Updated 2/21/2025 v.20.1

Earn rewards for product
reviews and publications.

Submit a publication at www.novusbio.com/publications

Submit a review at www.novusbio.com/reviews/destination/NB100-596



NB100-596

EGFR Antibody - BSA Free

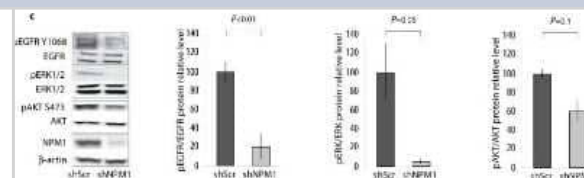
Product Information	
Unit Size	100 ul
Concentration	1.0 mg/ml
Storage	Store at 4C. Do not freeze.
Clonality	Polyclonal
Preservative	0.09% Sodium Azide
Isotype	IgG
Purity	Immunogen affinity purified
Buffer	Tris-Citrate/Phosphate (pH 7.0 - 8.0)

Product Description	
Description	This antibody can be used as the primary antibody in a PLA assay with the following as complementing antibodies:NB200-171
Host	Rabbit
Gene ID	1956
Gene Symbol	EGFR
Species	Human, Mouse
Immunogen	A synthetic peptide which maps to a region between residues 1150 and the C-terminus (residue 1210) of human Epidermal Growth Factor Receptor using the numbering given in Swiss-Prot entry P00533 (GeneID 1956).
Notes	This antibody can be used as the primary antibody in a PLA assay with the following as complementing antibodies:NB200-171

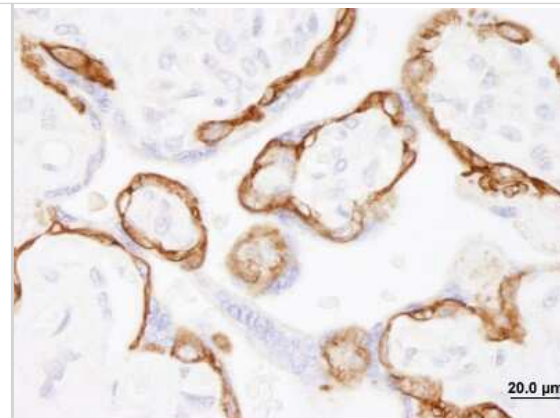
Product Application Details	
Applications	Western Blot, Simple Western, Immunohistochemistry, Immunohistochemistry-Paraffin, Immunoprecipitation
Recommended Dilutions	Western Blot 1:10000 - 1:25000, Simple Western, Immunohistochemistry 1:500 - 1:2000, Immunoprecipitation 2 - 10 ug/mg lysate, Immunohistochemistry-Paraffin 1:500 - 1:2000
Application Notes	Epitope retrieval with citrate buffer pH6.0 is recommended for FFPE tissue sections. See Simple Western Antibody Database for Simple Western validation: Tested in HeLa cell line; separated by size; antibody dilution of 1:100.

Images

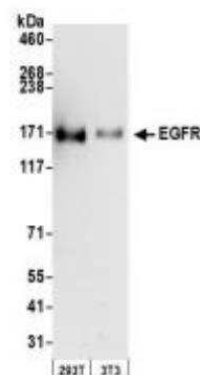
Western Blot: EGFR Antibody [NB100-596] - NPM1 knockdown decreases EGF expression. NPM1 controls activation of the EGF/EGFR pathway downstream effectors. Proteins, extracted from shScr and shNPM1 LNCaP cells cultured in RPMI 1640 10%FBS, were electrophoresed by SDS-PAGE. Transferred membranes were immunoblotted with indicated antibodies. Histograms show the band quantification reported to the beta-actin level. Blots are representative of three independent experiments with consistent results. Data are representative of at least three independent experiments and are expressed as the mean +/- SD. Image collected and cropped by CiteAb from the following publication (<https://dx.plos.org/10.1371/journal.pone.0096293>), licensed under a CC-BY license.



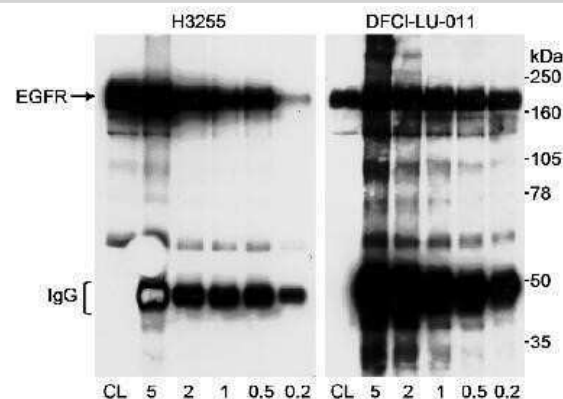
Immunohistochemistry-Paraffin: EGFR Antibody [NB100-596] - Section of human placenta. Antibody: Affinity purified rabbit anti-EGFR used at a dilution of 1:1,000 (1ug/ml). Detection: DAB.



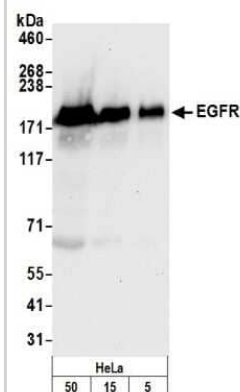
Western Blot: EGFR Antibody [NB100-596] - EGF R/ErbB1 Antibody [NB100-596] - Whole cell lysate (50 ug) from 293T and mouse NIH3T3 cells prepared using NETN lysis buffer. Antibody: Affinity purified rabbit anti-EGFR antibody used for WB at 0.04 ug/ml. Detection: Chemiluminescence with an exposure time of 30 seconds.



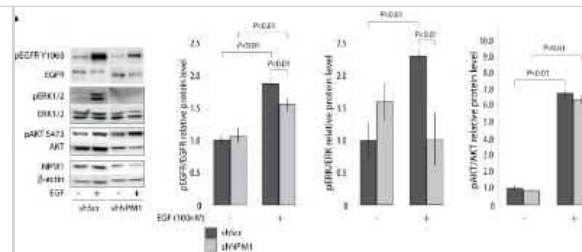
Western Blot: EGFR Antibody [NB100-596] - Detection of Human EGFR on HeLa whole cell lysate using NB100-596.



Western Blot: EGFR Antibody [NB100-596] - Detection of Human EGFR by Western Blot. Samples: Whole cell lysate (5, 15 and 50 ug) from HeLa cells prepared using NETN lysis buffer. Antibody: Affinity purified rabbit anti-EGFR antibody NB100-596 used for WB at 0.04 ug/ml. Detection: Chemiluminescence with an exposure time of 10 seconds.



Western Blot: EGFR Antibody [NB100-596] - NPM1 knockdown in prostate cancer cells reduces proliferation and migration capacities by inhibiting the EGF/EGFR pathway activity. (a) NPM1 down-regulation inhibits EGF induced ERK1/2 pathway activity. shScr and shNPM1 LNCaP cells were treated with 100 nM EGF and phosphorylation of the EGF/EGFR pathway effectors was analyzed using Western Blotting. Histograms show the band quantification reported to the beta-actin level. The blot is representative of three independent experiments with consistent results. Image collected and cropped by CiteAb from the following publication (<https://dx.plos.org/10.1371/journal.pone.0096293>), licensed under a CC-BY license.



Publications

Loubeau G, Boudra R, Maquaire S et al. NPM1 Silencing Reduces Tumour Growth and MAPk Signalling in Prostate Cancer Cells. PLoS ONE. 2014-05-06 [PMID: 24796332] (WB, Human)



Novus Biologicals USA

10730 E. Briarwood Avenue
Centennial, CO 80112
USA
Phone: 303.730.1950
Toll Free: 1.888.506.6887
Fax: 303.730.1966
nb-customerservice@bio-techne.com

Bio-Techne Canada

21 Canmotor Ave
Toronto, ON M8Z 4E6
Canada
Phone: 905.827.6400
Toll Free: 855.668.8722
Fax: 905.827.6402
canada.inquires@bio-techne.com

Bio-Techne Ltd

19 Barton Lane
Abingdon Science Park
Abingdon, OX14 3NB, United Kingdom
Phone: (44) (0) 1235 529449
Free Phone: 0800 37 34 15
Fax: (44) (0) 1235 533420
info.EMEA@bio-techne.com

General Contact Information

www.novusbio.com
Technical Support: nb-technical@bio-techne.com
Orders: nb-customerservice@bio-techne.com
General: novus@novusbio.com

Products Related to NB100-596

HAF008	Goat anti-Rabbit IgG Secondary Antibody [HRP]
NB7160	Goat anti-Rabbit IgG (H+L) Secondary Antibody [HRP]
NBP2-24891	Rabbit IgG Isotype Control
NBP1-84814PEP	EGFR Recombinant Protein Antigen

Limitations

This product is for research use only and is not approved for use in humans or in clinical diagnosis. Primary Antibodies are guaranteed for 1 year from date of receipt.

For more information on our 100% guarantee, please visit www.novusbio.com/guarantee

Earn gift cards/discounts by submitting a review: www.novusbio.com/reviews/submit/NB100-596

Earn gift cards/discounts by submitting a publication using this product:
www.novusbio.com/publications

