

Product Datasheet

SHP-1 Antibody NB100-58968

Unit Size: 0.1 mg

Store at -20C. Avoid freeze-thaw cycles.

www.novusbio.com



technical@novusbio.com

Publications: 1

Protocols, Publications, Related Products, Reviews, Research Tools and Images at:
www.novusbio.com/NB100-58968

Updated 10/23/2024 v.20.1

Earn rewards for product
reviews and publications.

Submit a publication at www.novusbio.com/publications

Submit a review at www.novusbio.com/reviews/destination/NB100-58968



NB100-58968

SHP-1 Antibody

Product Information	
Unit Size	0.1 mg
Concentration	0.5 mg/ml
Storage	Store at -20C. Avoid freeze-thaw cycles.
Clonality	Polyclonal
Preservative	0.02% Sodium Azide
Isotype	IgG
Purity	Immunogen affinity purified
Buffer	Tris saline (20 mM Tris pH 7.3, 150 mM NaCl), 0.5% BSA

Product Description	
Host	Goat
Gene ID	5777
Gene Symbol	PTPN6
Species	Human, Mouse, Rat
Specificity/Sensitivity	This antibody is expected to recognize both reported isoforms (NP_536858.1 and NP_002822.2). Please note this antibody was designed using the mouse sequence, which differs by 1 amino acid from the human sequence.
Immunogen	Peptide with sequence C-KASRTSSKHKEE corresponding to internal region according to NP_002822.2.

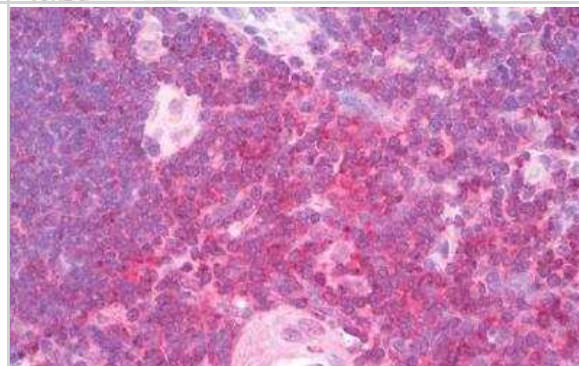
Product Application Details	
Applications	Western Blot, Immunohistochemistry, Immunohistochemistry-Paraffin, Peptide ELISA
Recommended Dilutions	Western Blot 0.01 - 0.1 ug/mL, Immunohistochemistry, Immunohistochemistry-Paraffin 5 ug/mL, Peptide ELISA Detection limit 1:128000
Application Notes	Western blot: Approx 70 kDa band observed in Human Liver and Mouse Thymus lysates and approx 70-75 kDa in Rat Thymus lysates (calculated MW of 67.6 kDa according to Human NP_536858.1 and Mouse NP_038573.2, and 69.6kDa according to Rat NP_446360.1).

Images

Western Blot: SHP-1 Antibody [NB100-58968] - Staining of Mouse Thymus lysate (A) with antibody at 0.01 ug/mL and Rat Thymus lysate with antibody at 0.1 ug/mL (B). 35 ug protein in RIPA buffer. Detected by chemiluminescence.



Immunohistochemistry-Paraffin: SHP-1 Antibody [NB100-58968] - Staining of paraffin embedded Human Thyroid. Antibody at 5 ug/mL. Steamed antigen retrieval with citrate buffer pH 6, AP-staining.



Western Blot: SHP-1 Antibody [NB100-58968] - Staining of Human Liver lysate (35 ug protein in RIPA buffer). Antibody at 0.1 ug/mL. Primary incubation was 1 hour. Detected by chemiluminescence.



Publications

Dubois MJ, Bergeron S, Kim HJ et al. The SHP-1 protein tyrosine phosphatase negatively modulates glucose homeostasis. *Nat Med* 2006-05-01 [PMID: 16617349]



Novus Biologicals USA

10730 E. Briarwood Avenue
Centennial, CO 80112
USA
Phone: 303.730.1950
Toll Free: 1.888.506.6887
Fax: 303.730.1966
nb-customerservice@bio-techne.com

Bio-Techne Canada

21 Canmotor Ave
Toronto, ON M8Z 4E6
Canada
Phone: 905.827.6400
Toll Free: 855.668.8722
Fax: 905.827.6402
canada.inquires@bio-techne.com

Bio-Techne Ltd

19 Barton Lane
Abingdon Science Park
Abingdon, OX14 3NB, United Kingdom
Phone: (44) (0) 1235 529449
Free Phone: 0800 37 34 15
Fax: (44) (0) 1235 533420
info.EMEA@bio-techne.com

General Contact Information

www.novusbio.com
Technical Support: nb-technical@bio-techne.com
Orders: nb-customerservice@bio-techne.com
General: novus@novusbio.com

Products Related to NB100-58968

NB820-59232	Human Liver Whole Tissue Lysate (Adult Whole Normal)
HAF017	Rabbit anti-Goat IgG Secondary Antibody [HRP (Horseradish Peroxidase)]
HAF109	Donkey anti-Goat IgG Secondary Antibody [HRP (Horseradish Peroxidase)]
NB410-28088-1mg	Goat IgG Isotype Control

Limitations

This product is for research use only and is not approved for use in humans or in clinical diagnosis. Primary Antibodies are guaranteed for 1 year from date of receipt.

For more information on our 100% guarantee, please visit www.novusbio.com/guarantee

Earn gift cards/discounts by submitting a review: www.novusbio.com/reviews/submit/NB100-58968

Earn gift cards/discounts by submitting a publication using this product:
www.novusbio.com/publications



