

# Product Datasheet

## PCM1 Antibody NB100-58828

Unit Size: 0.1 ml

Store at 4C. Do not freeze.

[www.novusbio.com](http://www.novusbio.com)



[technical@novusbio.com](mailto:technical@novusbio.com)

### Publications: 3

Protocols, Publications, Related Products, Reviews, Research Tools and Images at:  
[www.novusbio.com/NB100-58828](http://www.novusbio.com/NB100-58828)

Updated 10/23/2024 v.20.1

Earn rewards for product  
reviews and publications.

Submit a publication at [www.novusbio.com/publications](http://www.novusbio.com/publications)

Submit a review at [www.novusbio.com/reviews/destination/NB100-58828](http://www.novusbio.com/reviews/destination/NB100-58828)



**NB100-58828**

PCM1 Antibody

Product Information	
Unit Size	0.1 ml
Concentration	0.2 mg/ml
Storage	Store at 4C. Do not freeze.
Clonality	Polyclonal
Preservative	0.09% Sodium Azide
Isotype	IgG
Purity	Immunogen affinity purified
Buffer	TBS and 0.1% BSA

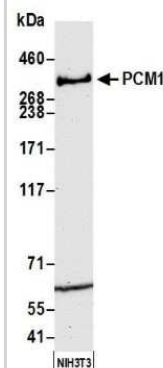
Product Description	
Host	Rabbit
Gene ID	5108
Gene Symbol	PCM1
Species	Human, Mouse
Immunogen	The immunogen recognized by this antibody maps to a region between residue 1925 and 1975 of human pericentriolar material 1 using the numbering given in entry NP_006188.2 (GenelD 5108).

Product Application Details	
Applications	Western Blot, Immunoprecipitation
Recommended Dilutions	Western Blot, Immunoprecipitation 2-5 mcg/mg lysate

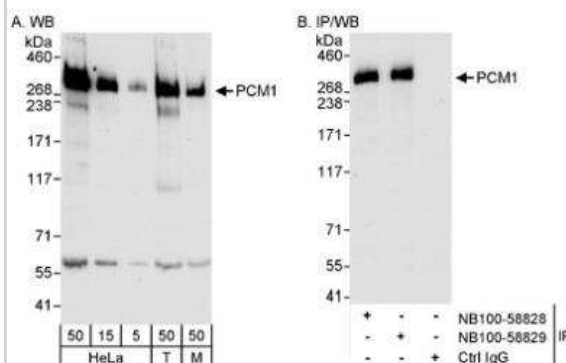


## Images

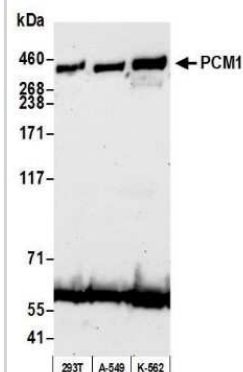
**Western Blot: PCM1 Antibody [NB100-58828] - Detection of mouse PCM1 by western blot.** Samples: Whole cell lysate (50 ug) from NIH 3T3 cells prepared using NETN lysis buffer. Antibody: Affinity purified rabbit anti-PCM1 antibody NB100-58828 used for WB at 0.1 ug/ml. Detection: Chemiluminescence with an exposure time of 3 minutes.



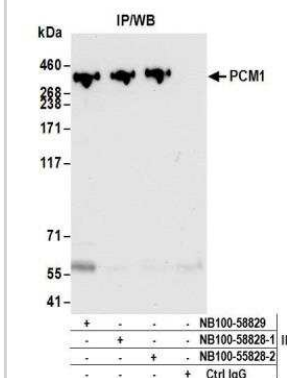
**Western Blot: PCM1 Antibody [NB100-58828] - Detection of Human and Mouse PCM1 on HeLa whole cell lysate using NB100-58828.** PCM1 was also immunoprecipitated by rabbit anti-PCM1 antibody NB100-58829.



**Western Blot: PCM1 Antibody [NB100-58828] - Detection of human PCM1 by western blot.** Samples: Whole cell lysate (50 ug) from HEK293T, A-549, and K-562 cells prepared using NETN lysis buffer. Antibody: Affinity purified rabbit anti-PCM1 antibody NB100-58828 used for WB at 0.1 ug/ml. Detection: Chemiluminescence with an exposure time of 75 seconds.



**Immunoprecipitation: PCM1 Antibody [NB100-58828] - Detection of human PCM1 by western blot of immunoprecipitates.** Samples: Whole cell lysate (1.0 mg per IP reaction; 20% of IP loaded) from HEK293T cells prepared using NETN lysis buffer. Antibodies: Affinity purified rabbit anti-PCM1 antibody NB100-58828 (lot NB100-58828-2) used for IP at 6 ug per reaction. PCM1 was also immunoprecipitated by a previous lot of this antibody (lot NB100-58828-1) and rabbit anti-PCM1 antibody NB100-58829. For blotting immunoprecipitated PCM1, NB100-58828 was used at 0.1 ug/ml. Detection: Chemiluminescence with an exposure time of 10 seconds.



## Publications

Kuriyama R, Bettencourt-Dias M, Hoffmann I et al. Gamma-tubulin-containing abnormal centrioles are induced by insufficient Plk4 in human HCT116 colorectal cancer cells. J Cell Sci 2009-06-01 [PMID: 19454482]

Chakravarthy B, Menard M, Brown L et al. A synthetic peptide corresponding to a region of the human pericentriolar material 1 (PCM-1) protein binds beta-amyloid (Abeta1-42 ) oligomers J Neurochem 2013-02-22 [PMID: 23432034] (WB, IP, Mouse)

Moynihan KL, Pooley R, Miller PM et al. Murine CENP-F regulates centrosomal microtubule nucleation and interacts with Hook2 at the centrosome. Mol Biol Cell. 20(22):4790-803. 2009-11-01 [PMID: 19793914]





### **Novus Biologicals USA**

10730 E. Briarwood Avenue  
Centennial, CO 80112  
USA  
Phone: 303.730.1950  
Toll Free: 1.888.506.6887  
Fax: 303.730.1966  
nb-customerservice@bio-techne.com

### **Bio-Techne Canada**

21 Canmotor Ave  
Toronto, ON M8Z 4E6  
Canada  
Phone: 905.827.6400  
Toll Free: 855.668.8722  
Fax: 905.827.6402  
canada.inquires@bio-techne.com

### **Bio-Techne Ltd**

19 Barton Lane  
Abingdon Science Park  
Abingdon, OX14 3NB, United Kingdom  
Phone: (44) (0) 1235 529449  
Free Phone: 0800 37 34 15  
Fax: (44) (0) 1235 533420  
info.EMEA@bio-techne.com

### **General Contact Information**

www.novusbio.com  
Technical Support: nb-technical@bio-techne.com  
Orders: nb-customerservice@bio-techne.com  
General: novus@novusbio.com

### **Products Related to NB100-58828**

HAF008	Goat anti-Rabbit IgG Secondary Antibody [HRP]
NB7160	Goat anti-Rabbit IgG (H+L) Secondary Antibody [HRP]
NBP2-24891	Rabbit IgG Isotype Control
H00005108-P01-10ug	Recombinant Human PCM1 GST (N-Term) Protein

### **Limitations**

This product is for research use only and is not approved for use in humans or in clinical diagnosis. Primary Antibodies are guaranteed for 1 year from date of receipt.

For more information on our 100% guarantee, please visit [www.novusbio.com/guarantee](http://www.novusbio.com/guarantee)

Earn gift cards/discounts by submitting a review: [www.novusbio.com/reviews/submit/NB100-58828](http://www.novusbio.com/reviews/submit/NB100-58828)

Earn gift cards/discounts by submitting a publication using this product:  
[www.novusbio.com/publications](http://www.novusbio.com/publications)

