

Product Datasheet

Filamin A Antibody NB100-58812

Unit Size: 0.1 ml

Store at 4C. Do not freeze.

www.novusbio.com



technical@novusbio.com

Publications: 3

Protocols, Publications, Related Products, Reviews, Research Tools and Images at:
www.novusbio.com/NB100-58812

Updated 10/23/2024 v.20.1

Earn rewards for product
reviews and publications.

Submit a publication at www.novusbio.com/publications

Submit a review at www.novusbio.com/reviews/destination/NB100-58812



NB100-58812**Filamin A Antibody**

Product Information	
Unit Size	0.1 ml
Concentration	0.2 mg/ml
Storage	Store at 4C. Do not freeze.
Clonality	Polyclonal
Preservative	0.09% Sodium Azide
Isotype	IgG
Purity	Immunogen affinity purified
Buffer	TBS and 0.1% BSA

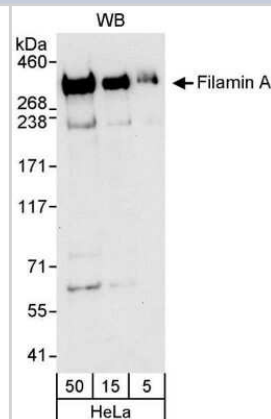
Product Description	
Host	Rabbit
Gene ID	2316
Gene Symbol	FLNA
Species	Human
Immunogen	The immunogen recognized by this antibody maps to a region between residue 400 and 450 of human Filamin A using the numbering given in entry NP_001447.1 (GeneID 2316).

Product Application Details	
Applications	Western Blot, Immunohistochemistry, Immunohistochemistry-Paraffin, Immunoprecipitation (Negative)
Recommended Dilutions	Western Blot 1:2000-1:10000, Immunohistochemistry 1:500 - 1:2000, Immunohistochemistry-Paraffin 1:10-1:500, Immunoprecipitation (Negative)
Application Notes	Epitope retrieval with citrate buffer pH6.0 is recommended for FFPE tissue sections.

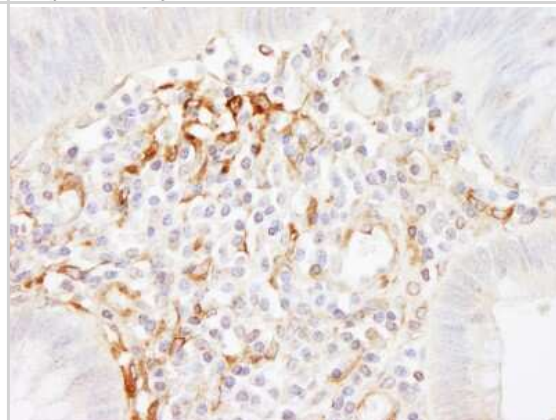


Images

Western Blot: Filamin A Antibody [NB100-58812] - Whole cell lysate (5, 15 and 50 ug for WB) from HeLa cells. Antibody used for WB at 0.04 ug/ml.



Immunohistochemistry-Paraffin: Filamin A Antibody [NB100-58812] - Sample: FFPE section of human colon carcinoma. Antibody: Affinity purified rabbit anti-Filamin A used at a dilution of 1:1,000 (0.2ug/ml). Detection: DAB



Publications

Bolgi O, Silva-Garcia M, Ross B et al. Dipeptidyl peptidase 9 triggers BRCA2 degradation and promotes DNA damage repair EMBO reports 2022-08-01 [PMID: 35912982] (WB, KD, Human)

Details:
Appendix Figure S1, 1:500

Justa-Schuch D, Silva-Garcia M, Pilla E et al. DPP9 is a novel component of the N-end rule pathway targeting the tyrosine kinase Syk. Elife. 2016-09-10 [PMID: 27614019] (Human)

Thoms HC, Loveridge CJ, Simpson J et al. Nucleolar targeting of RelA(p65) is regulated by COMMD1-dependent ubiquitination. Cancer Res 2010-01-01 [PMID: 20048074]



Novus Biologicals USA

10730 E. Briarwood Avenue
Centennial, CO 80112
USA
Phone: 303.730.1950
Toll Free: 1.888.506.6887
Fax: 303.730.1966
nb-customerservice@bio-techne.com

Bio-Techne Canada

21 Canmotor Ave
Toronto, ON M8Z 4E6
Canada
Phone: 905.827.6400
Toll Free: 855.668.8722
Fax: 905.827.6402
canada.inquires@bio-techne.com

Bio-Techne Ltd

19 Barton Lane
Abingdon Science Park
Abingdon, OX14 3NB, United Kingdom
Phone: (44) (0) 1235 529449
Free Phone: 0800 37 34 15
Fax: (44) (0) 1235 533420
info.EMEA@bio-techne.com

General Contact Information

www.novusbio.com
Technical Support: nb-technical@bio-
techne.com
Orders: nb-customerservice@bio-techne.com
General: novus@novusbio.com

Products Related to NB100-58812

HAF008	Goat anti-Rabbit IgG Secondary Antibody [HRP]
NB7160	Goat anti-Rabbit IgG (H+L) Secondary Antibody [HRP]
NBP2-24891	Rabbit IgG Isotype Control
H00002316-P01-10ug	Recombinant Human Filamin A GST (N-Term) Protein

Limitations

This product is for research use only and is not approved for use in humans or in clinical diagnosis. Primary Antibodies are guaranteed for 1 year from date of receipt.

For more information on our 100% guarantee, please visit www.novusbio.com/guarantee

Earn gift cards/discounts by submitting a review: www.novusbio.com/reviews/submit/NB100-58812

Earn gift cards/discounts by submitting a publication using this product:
www.novusbio.com/publications

