

# Product Datasheet

## CHAF1B Antibody NB100-57523

Unit Size: 0.1 ml

Store at 4C. Do not freeze.

[www.novusbio.com](http://www.novusbio.com)



[technical@novusbio.com](mailto:technical@novusbio.com)

### Publications: 3

Protocols, Publications, Related Products, Reviews, Research Tools and Images at:  
[www.novusbio.com/NB100-57523](http://www.novusbio.com/NB100-57523)

Updated 9/9/2025 v.20.1

Earn rewards for product  
reviews and publications.

Submit a publication at [www.novusbio.com/publications](http://www.novusbio.com/publications)

Submit a review at [www.novusbio.com/reviews/destination/NB100-57523](http://www.novusbio.com/reviews/destination/NB100-57523)



**NB100-57523**

## CHAF1B Antibody

Product Information	
Unit Size	0.1 ml
Concentration	0.2 mg/ml
Storage	Store at 4C. Do not freeze.
Clonality	Polyclonal
Preservative	0.09% Sodium Azide
Isotype	IgG
Purity	Immunogen affinity purified
Buffer	TBS and 0.1% BSA

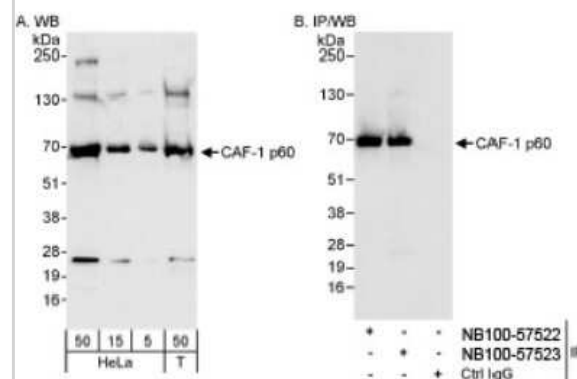
Product Description	
Description	Novus Biologicals Rabbit CHAF1B Antibody (NB100-57523) is a polyclonal antibody validated for use in IHC, WB and IP. Anti-CHAF1B Antibody: Cited in 3 publications. All Novus Biologicals antibodies are covered by our 100% guarantee.
Host	Rabbit
Gene ID	8208
Gene Symbol	CHAF1B
Species	Human
Immunogen	The immunogen recognized by this antibody maps to a region between residue 509 and the C-terminus (residue 559) of human chromatin assembly factor 1, subunit B (p60) using the numbering given in entry NP_005432.1 (GeneID 8208).

Product Application Details	
Applications	Western Blot, Immunohistochemistry-Paraffin, Immunohistochemistry, Immunoprecipitation
Recommended Dilutions	Western Blot 1:2000-1:10000, Immunohistochemistry, Immunoprecipitation 2-5 mcg/mg, Immunohistochemistry-Paraffin 1:10-1:500
Application Notes	Epitope retrieval with citrate buffer pH6.0 is recommended for FFPE tissue sections.

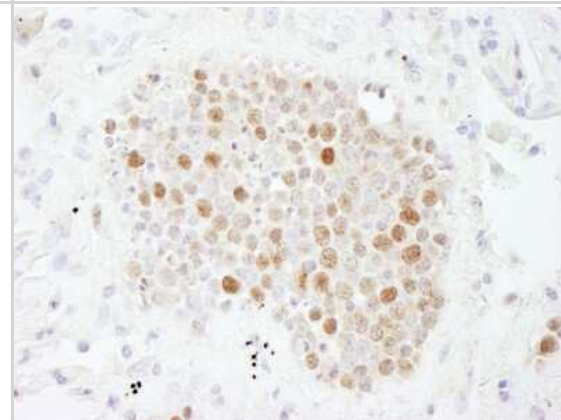


## Images

Samples: Whole cell lysate (1 mg for IP, 20% of IP loaded) from HeLa cells. Antibodies: Affinity purified rabbit anti-CAF-1 p60 antibody NB100-57523 was used for IP at 3 ug/mg lysate. CAF-1 p60 was also immunoprecipitated by rabbit anti-CAF-1 p60 antibody NB100-57523, which recognizes a downstream epitope. For blotting immunoprecipitated CAF-1 p60, NB100-57523 was used at 1 ug/ml. Detection: Chemiluminescence with an exposure time of 3 seconds.



Immunohistochemistry: CHAF1B Antibody [NB100-57523] - Sample: FFPE section of human small cell lung cancer. Antibody: Affinity purified rabbit anti-CAF-1 p60 used at a dilution of 1:200 (1ug/ml). Detection: DAB staining using Immunohistochemistry Accessory Kit.



## Publications

Lee K Y, Im J. S, et al. ASF1a Promotes Non-homologous End Joining Repair by Facilitating Phosphorylation of MDC1 by ATM at Double-Strand Breaks. *Mol Cell* 2017-10-05 [PMID: 28943310]

Azeroglu B, Khurana S, Wang SC et Al. Identification of modulators of the ALT pathway through a native FISH-based optical screen *Cell Rep* 2024-12-26 [PMID: 39729394]

Lee KY, Dutta A Chk1 promotes non-homologous end joining in G1 through direct phosphorylation of ASF1A *Cell reports* 2021-01-26 [PMID: 33503415] (IP, Human)



### **Novus Biologicals USA**

10730 E. Briarwood Avenue  
Centennial, CO 80112  
USA  
Phone: 303.730.1950  
Toll Free: 1.888.506.6887  
Fax: 303.730.1966  
nb-customerservice@bio-techne.com

### **Bio-Techne Canada**

21 Canmotor Ave  
Toronto, ON M8Z 4E6  
Canada  
Phone: 905.827.6400  
Toll Free: 855.668.8722  
Fax: 905.827.6402  
canada.inquires@bio-techne.com

### **Bio-Techne Ltd**

19 Barton Lane  
Abingdon Science Park  
Abingdon, OX14 3NB, United Kingdom  
Phone: (44) (0) 1235 529449  
Free Phone: 0800 37 34 15  
Fax: (44) (0) 1235 533420  
info.EMEA@bio-techne.com

### **General Contact Information**

www.novusbio.com  
Technical Support: nb-technical@bio-techne.com  
Orders: nb-customerservice@bio-techne.com  
General: novus@novusbio.com

### **Products Related to NB100-57523**

---

NBL1-09140	CHAF1B Overexpression Lysate
NBP2-33376H	Blue Marker Antibody (6F4-F6) [HRP]
HAF008	Goat anti-Rabbit IgG Secondary Antibody [HRP]
NB7160	Goat anti-Rabbit IgG (H+L) Secondary Antibody [HRP]
NBP2-24891	Rabbit IgG Isotype Control

---

### **Limitations**

This product is for research use only and is not approved for use in humans or in clinical diagnosis. Primary Antibodies are guaranteed for 1 year from date of receipt.

For more information on our 100% guarantee, please visit [www.novusbio.com/guarantee](http://www.novusbio.com/guarantee)

Earn gift cards/discounts by submitting a review: [www.novusbio.com/reviews/submit/NB100-57523](http://www.novusbio.com/reviews/submit/NB100-57523)

Earn gift cards/discounts by submitting a publication using this product:  
[www.novusbio.com/publications](http://www.novusbio.com/publications)

