

Product Datasheet

OSBPL5 Antibody NB100-57071

Unit Size: 0.1 mg

Store at -20C. Avoid freeze-thaw cycles.

www.novusbio.com



technical@novusbio.com

Publications: 3

Protocols, Publications, Related Products, Reviews, Research Tools and Images at:
www.novusbio.com/NB100-57071

Updated 10/23/2024 v.20.1

Earn rewards for product
reviews and publications.

Submit a publication at www.novusbio.com/publications

Submit a review at www.novusbio.com/reviews/destination/NB100-57071



NB100-57071**OSBPL5 Antibody****Product Information**

Unit Size	0.1 mg
Concentration	0.5 mg/ml
Storage	Store at -20C. Avoid freeze-thaw cycles.
Clonality	Polyclonal
Preservative	0.02% Sodium Azide
Isotype	IgG
Purity	Immunogen affinity purified
Buffer	Tris saline (20 mM Tris pH 7.3, 150 mM NaCl), 0.5% BSA

Product Description

Host	Goat
Gene ID	114879
Gene Symbol	OSBPL5
Species	Human, Mouse
Reactivity Notes	Mouse reactivity reported in scientific literature (PMID: 22241858).
Specificity/Sensitivity	This antibody is expected to recognise both reported isoforms. Variants (NP_663613.1; NP_001137535.1) encode the same isoform.
Immunogen	Peptide with sequence KEEAFLRRRFSLC corresponding to N-Terminus according to NP_065947.1, NP_663613.1, NP_001137535.1.

Product Application Details

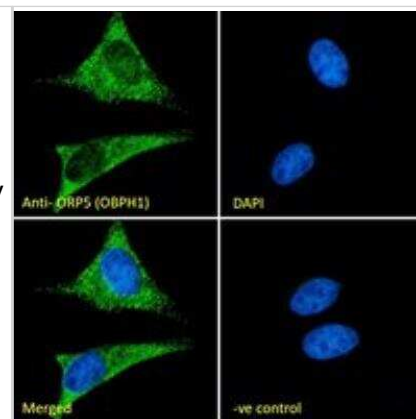
Applications	Western Blot, Flow Cytometry, Immunocytochemistry/ Immunofluorescence, Immunohistochemistry, Immunohistochemistry-Paraffin, Peptide ELISA
Recommended Dilutions	Western Blot 0.03 - 0.3 ug/ml, Flow Cytometry 10 ug/ml, Immunohistochemistry 5 ug/mL, Immunocytochemistry/ Immunofluorescence 10 ug/ml, Immunohistochemistry-Paraffin 5 ug/mL, Peptide ELISA Detection limit 1:32000
Application Notes	Western blot: Approx. 100kDa band observed in lysates of cell line Jurkat and in Rat Spleen lysates (calculated MW of 98.4kDa according to Human NP_065947.1 and 101.7kDa according to Rat NP_001015024.2)

Images

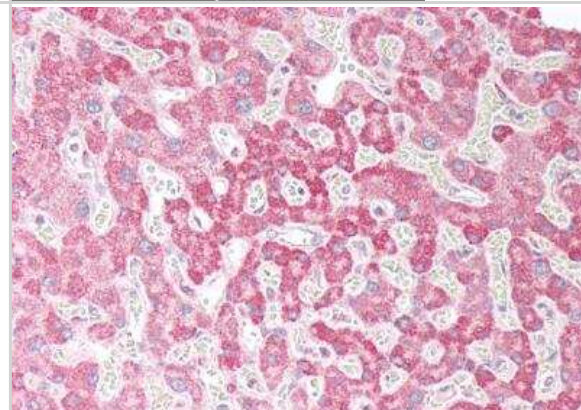
Western Blot: OSBPL5 Antibody [NB100-57071] - (0.1ug/ml) staining of Jurkat cell lysate (35ug protein in RIPA buffer). Detected by chemiluminescence.

250kDa
150kDa
100kDa
75kDa
50kDa
37kDa
25kDa
20kDa
15kDa

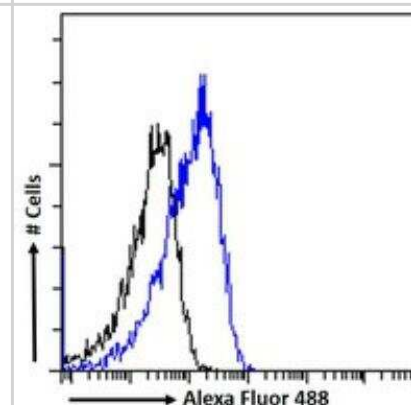
Immunocytochemistry/Immunofluorescence: OSBPL5 Antibody [NB100-57071] - Immunofluorescence analysis of paraformaldehyde fixed HeLa cells, permeabilized with 0.15% Triton. Primary incubation 1hr (10ug/ml) followed by Alexa Fluor 488 secondary antibody (2ug/ml), showing cytoplasmic staining. The nuclear stain is DAPI (blue). Negative control: Unimmunized goat IgG (10ug/ml) followed by Alexa Fluor 488 secondary antibody (2ug/ml).



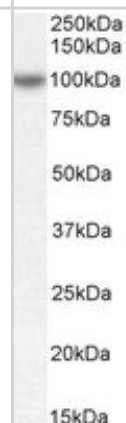
Immunohistochemistry-Paraffin: OSBPL5 Antibody [NB100-57071] - Staining of Human Liver. Antibody at 5 ug/mL. Steamed antigen retrieval with citrate buffer pH 6, AP-staining.



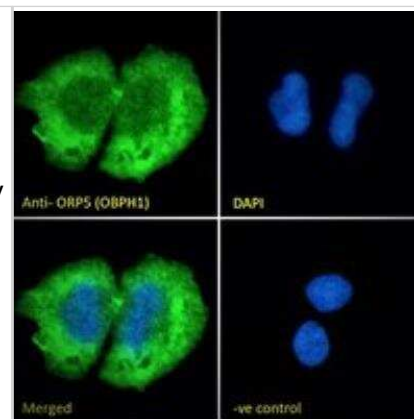
Flow Cytometry: OSBPL5 Antibody [NB100-57071] - Flow cytometric analysis of paraformaldehyde fixed HeLa cells (blue line), permeabilized with 0.5% Triton. Primary incubation 1hr (10ug/ml) followed by Alexa Fluor 488 secondary antibody (1ug/ml). IgG control: Unimmunized goat IgG (black line) followed by Alexa Fluor 488 secondary antibody.



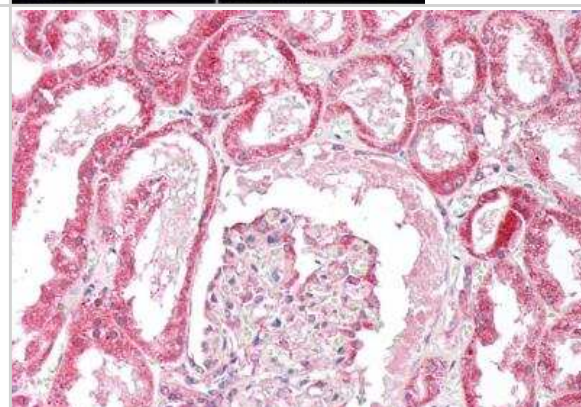
Western Blot: OSBPL5 Antibody [NB100-57071] - (0.3ug/ml) staining of Rat Spleen lysate (35ug protein in RIPA buffer). Detected by chemiluminescence.



Immunocytochemistry/Immunofluorescence: OSBPL5 Antibody [NB100-57071] - Immunofluorescence analysis of paraformaldehyde fixed U2OS cells, permeabilized with 0.15% Triton. Primary incubation 1hr (10ug/ml) followed by Alexa Fluor 488 secondary antibody (2ug/ml), showing cytoplasmic staining. The nuclear stain is DAPI (blue). Negative control: Unimmunized goat IgG (10ug/ml) followed by Alexa Fluor 488 secondary antibody (2ug/ml).



Immunohistochemistry-Paraffin: OSBPL5 Antibody [NB100-57071] - Staining of Human Kidney. Antibody at 5 ug/mL. Steamed antigen retrieval with citrate buffer pH 6, AP-staining.



Publications

Kattan WE, Chen W, Ma X et al. Targeting plasma membrane phosphatidylserine content to inhibit oncogenic KRAS function Life Sci Alliance. 2019-10-01 [PMID: 31451509]

Higashimoto K, Soejima H, Yatsuki H et al. Characterization and Imprinting Status of OBPH1/Obph1 Gene: Implications for an Extended Imprinting Domain in Human and Mouse. Genomics 2002-12-01 [PMID: 12504849]

Storey SM, McIntosh AL, Huang H et al. Intracellular cholesterol-binding proteins enhance HDL-mediated cholesterol uptake in cultured primary mouse hepatocytes Am J Physiol Gastrointest Liver Physiol 2012-04-15 [PMID: 22241858] (WB, Mouse)



Novus Biologicals USA

10730 E. Briarwood Avenue
Centennial, CO 80112
USA
Phone: 303.730.1950
Toll Free: 1.888.506.6887
Fax: 303.730.1966
nb-customerservice@bio-techne.com

Bio-Techne Canada

21 Canmotor Ave
Toronto, ON M8Z 4E6
Canada
Phone: 905.827.6400
Toll Free: 855.668.8722
Fax: 905.827.6402
canada.inquires@bio-techne.com

Bio-Techne Ltd

19 Barton Lane
Abingdon Science Park
Abingdon, OX14 3NB, United Kingdom
Phone: (44) (0) 1235 529449
Free Phone: 0800 37 34 15
Fax: (44) (0) 1235 533420
info.EMEA@bio-techne.com

General Contact Information

www.novusbio.com
Technical Support: nb-technical@bio-techne.com
Orders: nb-customerservice@bio-techne.com
General: novus@novusbio.com

Products Related to NB100-57071

NB820-59259	Human Spleen Whole Tissue Lysate (Adult Whole Normal)
HAF017	Rabbit anti-Goat IgG Secondary Antibody [HRP (Horseradish Peroxidase)]
HAF109	Donkey anti-Goat IgG Secondary Antibody [HRP (Horseradish Peroxidase)]
NB410-28088-1mg	Goat IgG Isotype Control

Limitations

This product is for research use only and is not approved for use in humans or in clinical diagnosis. Primary Antibodies are guaranteed for 1 year from date of receipt.

For more information on our 100% guarantee, please visit www.novusbio.com/guarantee

Earn gift cards/discounts by submitting a review: www.novusbio.com/reviews/submit/NB100-57071

Earn gift cards/discounts by submitting a publication using this product:
www.novusbio.com/publications



