

# Product Datasheet

## TLR2 Antibody (TL2.1) - Azide Free NB100-56726

Unit Size: 0.1 mg

Store at 4C short term. Aliquot and store at -20C long term. Avoid freeze-thaw cycles.

[www.novusbio.com](http://www.novusbio.com)



[technical@novusbio.com](mailto:technical@novusbio.com)

**Reviews: 2 Publications: 40**

Protocols, Publications, Related Products, Reviews, Research Tools and Images at:  
[www.novusbio.com/NB100-56726](http://www.novusbio.com/NB100-56726)

Updated 10/23/2024 v.20.1

**Earn rewards for product  
reviews and publications.**

Submit a publication at [www.novusbio.com/publications](http://www.novusbio.com/publications)

Submit a review at [www.novusbio.com/reviews/destination/NB100-56726](http://www.novusbio.com/reviews/destination/NB100-56726)



**NB100-56726**

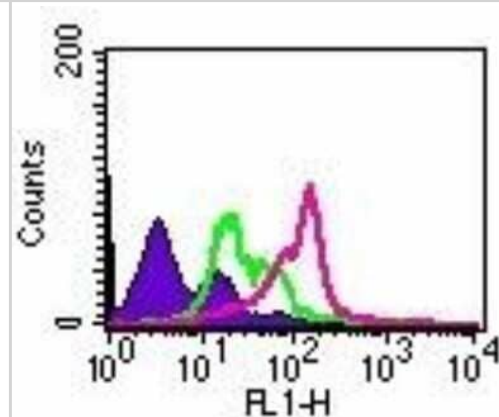
TLR2 Antibody (TL2.1) - Azide Free

<b>Product Information</b>	
<b>Unit Size</b>	0.1 mg
<b>Concentration</b>	Please see the vial label for concentration. If unlisted please contact technical services.
<b>Storage</b>	Store at 4C short term. Aliquot and store at -20C long term. Avoid freeze-thaw cycles.
<b>Clonality</b>	Monoclonal
<b>Clone</b>	TL2.1
<b>Preservative</b>	No Preservative
<b>Isotype</b>	IgG2a
<b>Purity</b>	Protein G purified
<b>Buffer</b>	Filter (0.2 micron) sterilized PBS
<b>Product Description</b>	
<b>Host</b>	Mouse
<b>Gene ID</b>	7097
<b>Gene Symbol</b>	TLR2
<b>Species</b>	Human, Mouse, Rat, Canine, Rabbit
<b>Immunogen</b>	This antibody was raised by immunizing mice with CHO cells transfected with human TLR2 cDNA (Flo et al, 2000). The hybridoma supernatants were selected by flow cytometry.
<b>Product Application Details</b>	
<b>Applications</b>	Western Blot, ELISA, Flow Cytometry, Flow (Cell Surface), Flow (Intracellular), Immunocytochemistry/ Immunofluorescence, Immunohistochemistry, Immunohistochemistry-Paraffin, In vitro assay, Immunoprecipitation, Block/Neutralize, CyTOF-ready
<b>Recommended Dilutions</b>	Western Blot reported in scientific literature (PMID 28546218), Flow Cytometry 1ul/1 million cells, ELISA reported in scientific literature (PMID 23629653), Immunohistochemistry, Immunocytochemistry/ Immunofluorescence 1:10 - 1:2000. Use reported in scientific literature (Mempel et al (2003)), Immunoprecipitation 1:10 - 1:500. Use reported in scientific literature (Flo et al (2000)), Immunohistochemistry-Paraffin reported in scientific literature (PMID 11160251), In vitro assay reported in scientific literature (PMID 24512642), Flow (Cell Surface) 1-2 ug/1 million cells, Flow (Intracellular), CyTOF-ready, Block/Neutralize reported in scientific literature (Flo et al (2000); PMID 24512642)
<b>Application Notes</b>	Flow (Cell Surface) reported in scientific literature (PMID 24836676)

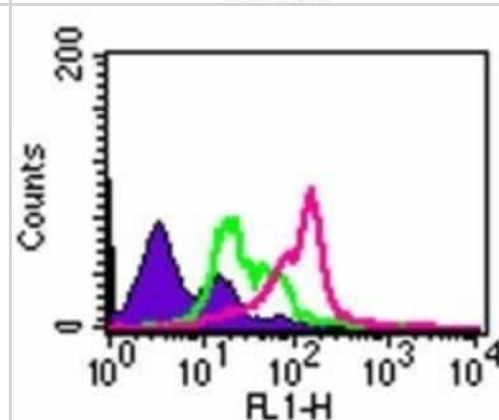


## Images

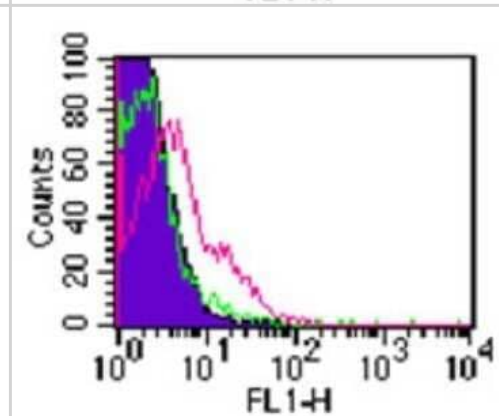
Flow Cytometry: TLR2 Antibody (TL2.1) - Azide Free [NB100-56726] - Analysis using Azide/BSA FREE version of NB100-56726. Intracellular flow analysis of TLR2 in  $1 \times 10^6$  PBMCs using 2  $\mu$ g of NB100-56722. Shaded histogram represents cells without antibody; green represents isotype control (Sigma, Cat. No. M5409); purple represents anti-TLR2 antibody.



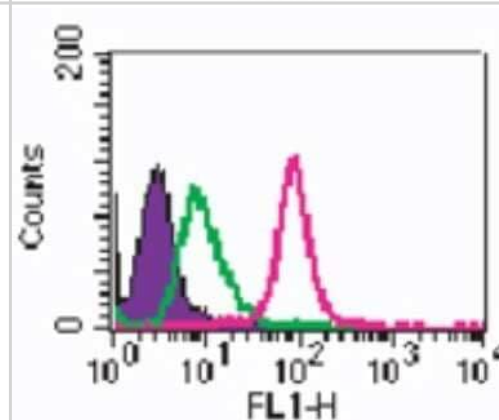
Flow Cytometry: TLR2 Antibody (TL2.1) - Azide Free [NB100-56726] - Intracellular analysis of TLR2 in  $10^6$  PBMs using 2  $\mu$ g of TLR2 antibody. Shaded histogram represents cells without antibody; green represents isotype control; red represents TLR2 antibody. goat anti-mouse IgG FITC secondary antibody was used in this test.



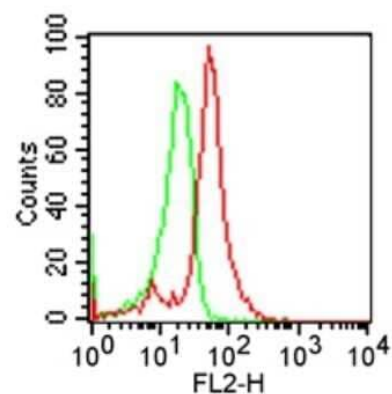
Flow Cytometry: TLR2 Antibody (TL2.1) - Azide Free [NB100-56726] - Analysis using the FITC conjugate of NB100-56726. Staining of TLR2 in  $10^6$  PBMCs (lymphocyte-gated) using 2  $\mu$ g of Mouse IgG2a Kappa, and red represents TLR2 antibody.



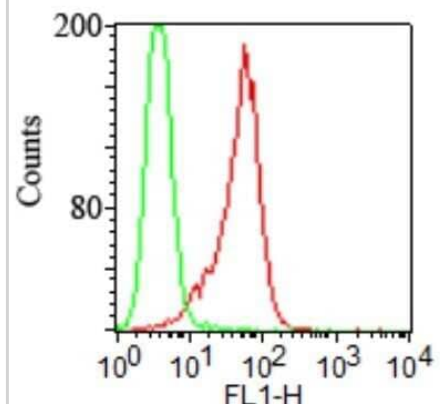
Flow Cytometry: TLR2 Antibody (TL2.1) - Azide Free [NB100-56726] - Analysis using the FITC conjugate of NB100-56726. Staining of TLR2 in  $10^6$  ThP1 cells using 2  $\mu$ g of this antibody. The closed histogram represents cells alone, green represents isotype control, red represents anti-TLR2 antibody.



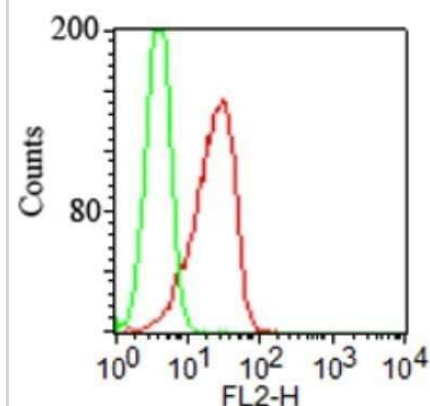
Flow (Intracellular): TLR2 Antibody (TL2.1) - Azide Free [NB100-56726] - Analysis using the PE conjugate of NB100-56726. Staining of TLR2 on PBMC using this antibody at 1 ug/10<sup>6</sup> cells. Green represents isotype control this antibody; red represents anti-TLR2 antibody.



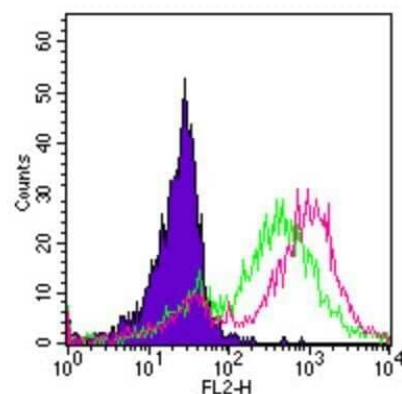
Flow (Cell Surface): TLR2 Antibody (TL2.1) - Azide Free [NB100-56726] - Analysis using the FITC conjugate of NB100-56726. Surface staining of stable HEK293/hTLR2 cells (IML-202, red) and vector control cells (IML-200, green) using TLR2 antibody at 1 ug/10<sup>6</sup> cells.



Flow (Cell Surface): TLR2 Antibody (TL2.1) - Azide Free [NB100-56726] - Analysis using the PE conjugate of NB100-56726. Staining of TLR2 on stable transfected cell line using this antibody at 1 ug/10<sup>6</sup> cells. Green represents isotype control; red represents anti-TLR2 antibody.



Flow Cytometry: TLR2 Antibody (TL2.1) - Azide Free [NB100-56726] - Analysis using Azide/BSA FREE version of NB100-56726. Cell surface flow analysis of TLR2 in 10<sup>6</sup> PBMCs using 1 ug of this antibody. Shaded histogram represents cells without antibody; green represents isotype control; red represents anti-TLR2 antibody.



## Publications

Tsai CC, Lin CR, Tsai HY et al. The immunologically active oligosaccharides isolated from wheatgrass modulate monocytes via Toll-like receptor-2 signaling J Biol Chem 2013-05-01 [PMID: 23629653]

Ji X, Zhang X et al The Heparin-Binding Hemagglutinin of *Nocardia cyriacigeorgica* GUH-2 Stimulates Inflammatory Cytokine Secretion Through Activation of Nuclear Factor  $\kappa$ B and Mitogen-Activated Protein Kinase Pathways via TLR4 *Front Cell Infect Microbiol* 2020-03-03 [PMID: 32117792] (WB, WB, Human)

**Details:**

Citation using the Azide Free version of this antibody.

The E, Yao Q, Zhang P et al. Mechanistic Roles of Matrilin-2 and Klotho in Modulating the Inflammatory Activity of Human Aortic Valve Cells Cells. [PMID: 32046115] (WB, Human)

Ji X, Zhang X, Li H et al. Nfa34810 facilitates *Nocardia farcinica* invasion of host cells and stimulates TNF-alpha secretion through activation of the NF-kappa B and MAPK pathways via TLR4 *Infect Immun*. [PMID: 31964749]

Li F, Song R, Ao L et al. ADAMTS5 Deficiency in Calcified Aortic Valves Is Associated With Elevated Pro-Osteogenic Activity in Valvular Interstitial Cells *Arterioscler thromb Vasc Biol* 2017-05-25 [PMID: 28546218] (WB, B/N, Human)

**Details:**

This reference used the Azide Free version of NB100-56722.

Tsai CC, Lin CR, Tsai HY et al. The immunologically active oligosaccharides isolated from wheatgrass modulate monocytes via Toll-like receptor-2 signaling *J Biol Chem*

**Details:**

This publication used the FITC conjugated form of this antibody (Cat# NB100-56058) and PE conjugated form of this antibody (Cat# NBP2-24909) and the Biotin conjugated form of this antibody (Cat# NB100-56056).

Klink M, Brzezinska M, Szulc I et al. Cholesterol oxidase is indispensable in the pathogenesis of *Mycobacterium tuberculosis* *PLoS One*. *PLoS One*. 2013-09-09 [PMID: 24039915] (B/N, Human)

**Details:**

This citation used the PE version of this antibody.

Brzezinska M, Szulc I, Brzostek A et al. The role of 3-ketosteroid 1(2)-dehydrogenase in the pathogenicity of *Mycobacterium tuberculosis*. *BMC Microbiol*. [PMID: 23425360] (B/N, Human)

**Details:**

Citation using the Azide Free form of this antibody.

Kasari Villu, Kurg Kristi, Margus Tonu et al. The *Escherichia coli* mqsR and ygiT genes encode a new toxin-antitoxin pair. *J Bacteriol*. [PMID: 20233923]

**Details:**

Citation using the Azide Free form of this antibody.

Kabisch R, Mejias-Luque R, Gerhard M, Prinz C. Involvement of Toll-Like Receptors on *Helicobacter pylori*-Induced Immunity. *PLoS ONE*. [PMID: 25153703] (B/N, Human)

**Details:**

Citation using the Azide Free form of this antibody.

Rydberg C, Mansson A, Uddman R et al. Toll-like receptor agonists induce inflammation and cell death in a model of head and neck squamous cell carcinomas. *Immunology*. 2009-09-01 [PMID: 19740321]

**Details:**

TLR2/CD282 PE (IMG-416D), TLR3/CD283 (IMG-315A), TLR3/CD283 (IMG-315D), TLR5 PE (IMG-663D), TLR5 (IMG-663). 1. IHC(paraffin): Human head and neck squamous (HNSCC) cell carcinomas showing keratinized cell carcinoma from the larynx stained with TLR2 (IMG-416A) and TLR5 antibodies (IMG-663A), Fig 1A, 1B, & 1C. 2. Flow (intracellular): TLR2 PE (IMG-416D), TLR3 PE (IMG-315D), and TLR5 PE (IMG-663D) antibodies were used in human bronchial epithelial (NL-20) and human pharyngeal squamous (Detroit-562) carcinoma cell line, Fig 2C.

Guzy C, Paclik D, Schirbel A et al. The probiotic Escherichia coli strain Nissle 1917 induces gammadelta T cell apoptosis via caspase- and FasL-dependent pathways. *Int Immunol*. 2008-07-01 [PMID: 18448456]

Details:

Antibodies cited [Flow (Cell Surface) (human PBMCs), Fig. 5]: 1. TLR2 FITC [IMG-416C] 2. TLR4 FITC [IMG-417C].

More publications at <http://www.novusbio.com/NB100-56726>





### **Novus Biologicals USA**

10730 E. Briarwood Avenue  
Centennial, CO 80112  
USA  
Phone: 303.730.1950  
Toll Free: 1.888.506.6887  
Fax: 303.730.1966  
nb-customerservice@bio-techne.com

### **Bio-Techne Canada**

21 Canmotor Ave  
Toronto, ON M8Z 4E6  
Canada  
Phone: 905.827.6400  
Toll Free: 855.668.8722  
Fax: 905.827.6402  
canada.inquires@bio-techne.com

### **Bio-Techne Ltd**

19 Barton Lane  
Abingdon Science Park  
Abingdon, OX14 3NB, United Kingdom  
Phone: (44) (0) 1235 529449  
Free Phone: 0800 37 34 15  
Fax: (44) (0) 1235 533420  
info.EMEA@bio-techne.com

### **General Contact Information**

www.novusbio.com  
Technical Support: nb-technical@bio-techne.com  
Orders: nb-customerservice@bio-techne.com  
General: novus@novusbio.com

### **Products Related to NB100-56726**

---

NBL1-16952	TLR2 Overexpression Lysate
NBP2-25297	Pam3CSK4, TLR1 and TLR2 Ligand
NBP2-29331	TIRAP (TLR2 and TLR4) Inhibitor Peptide Set
HAF007	Goat anti-Mouse IgG Secondary Antibody [HRP]
NB720-B	Rabbit anti-Mouse IgG (H+L) Secondary Antibody [Biotin]
NBP1-96778	Mouse IgG2a Isotype Control (M2A)

---

### **Limitations**

This product is for research use only and is not approved for use in humans or in clinical diagnosis. Primary Antibodies are guaranteed for 1 year from date of receipt.

For more information on our 100% guarantee, please visit [www.novusbio.com/guarantee](http://www.novusbio.com/guarantee)

Earn gift cards/discounts by submitting a review: [www.novusbio.com/reviews/submit/NB100-56726](http://www.novusbio.com/reviews/submit/NB100-56726)

Earn gift cards/discounts by submitting a publication using this product:  
[www.novusbio.com/publications](http://www.novusbio.com/publications)



