

# Product Datasheet

## CRHR2/CRF2 Antibody - BSA Free NB100-56485

Unit Size: 0.1 mg

Store at 4C short term. Aliquot and store at -20C long term. Avoid freeze-thaw cycles.

[www.novusbio.com](http://www.novusbio.com)



[technical@novusbio.com](mailto:technical@novusbio.com)

**Reviews: 1 Publications: 5**

Protocols, Publications, Related Products, Reviews, Research Tools and Images at:  
[www.novusbio.com/NB100-56485](http://www.novusbio.com/NB100-56485)

Updated 2/21/2025 v.20.1

**Earn rewards for product  
reviews and publications.**

Submit a publication at [www.novusbio.com/publications](http://www.novusbio.com/publications)

Submit a review at [www.novusbio.com/reviews/destination/NB100-56485](http://www.novusbio.com/reviews/destination/NB100-56485)



**NB100-56485**

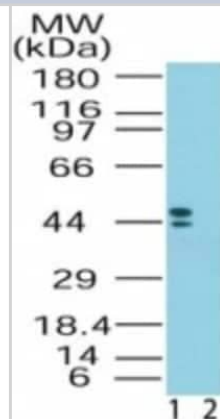
CRHR2/CRF2 Antibody - BSA Free

<b>Product Information</b>	
<b>Unit Size</b>	0.1 mg
<b>Concentration</b>	1.0 mg/ml
<b>Storage</b>	Store at 4C short term. Aliquot and store at -20C long term. Avoid freeze-thaw cycles.
<b>Clonality</b>	Polyclonal
<b>Preservative</b>	0.05% Sodium Azide
<b>Isotype</b>	IgG
<b>Purity</b>	Protein G purified
<b>Buffer</b>	PBS
<b>Product Description</b>	
<b>Host</b>	Rabbit
<b>Gene ID</b>	1395
<b>Gene Symbol</b>	CRHR2
<b>Species</b>	Human, Mouse, Rat, Bovine, Canine, Chicken, Mammal
<b>Reactivity Notes</b>	Mammal reactivity reported in scientific literature (PMID:33344730) 94% sequence identity with Rhesus monkey
<b>Specificity/Sensitivity</b>	There are three isoforms of CRHR2 in human: alpha is 411 amino acids, beta is 438 amino acids, and gamma is 397 amino acids.
<b>Immunogen</b>	A portion of amino acids 75-125 of human CRHR2 was used as the immunogen.
<b>Product Application Details</b>	
<b>Applications</b>	Western Blot, Simple Western, Immunocytochemistry/ Immunofluorescence
<b>Recommended Dilutions</b>	Western Blot 0.5-2 ug/ml, Simple Western 1:200, Immunocytochemistry/ Immunofluorescence

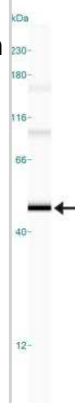


## Images

Western Blot: CRHR2/CRF2 Antibody [NB100-56485] - Analysis of CRHR2 in human brain lysate in the 1) absence and 2) presence of immunizing peptide using this antibody. Both of the isoforms detected by this antibody.



Simple Western: CRHR2/CRF2 Antibody [NB100-56485] - Shows a specific band for Corticotropin Releasing Factor 2 in 0.5 mg/ml of Human Brain lysate. This experiment was performed under reducing conditions using the 12-230 kDa separation system.



## Publications

Lee, JS;Kang, JY;Park, SY;Hwang, SJ;Bae, SJ;Son, CG; Central 5-HTergic hyperactivity induces myalgic encephalomyelitis/chronic fatigue syndrome (ME/CFS)-like pathophysiology *Journal of translational medicine* 2024-01-08 [PMID: 38191373]

M D, Cs M, Gn P et al. Social isolation alters behavior, the gut-immune-brain axis, and neurochemical circuits in male and female prairie voles *Neurobiology of Stress* 2020-11-01 [PMID: 33344730] (WB, Mammal)

### Details:

Prairie vole brain proteins were analyzed by Western blot analysis.

D'Costa S, Ayyadurai S, Gibson AJ et al. Mast Cell CRF2 Suppresses Mast Cell Degranulation and Limits the Severity of Anaphylaxis and Stress-Induced Intestinal Permeability. *J. Allergy Clin. Immunol.* 2018-11-12 [PMID: 30439403] (ICC/IF, Mouse)

Roh J, Shin SJ, Lee AN et al. RGS1 expression is associated with poor prognosis in multiple myeloma. *J Clin Pathol* 2016-07-21 [PMID: 27445341] (WB, Mouse)

Huang M, Kempuraj D, Papadopoulou N et al. Urocortin induces interleukin-6 release from rat cardiomyocytes through p38 MAP kinase, ERK and NF-kappaB activation. *J Mol Endocrinol.* 2009-05-01 [PMID: 19211730] (WB, Rat)

### Details:

WB (rat cardiomyocytes, cortex and cerebellum), Fig. 2c.



### **Novus Biologicals USA**

10730 E. Briarwood Avenue  
Centennial, CO 80112  
USA  
Phone: 303.730.1950  
Toll Free: 1.888.506.6887  
Fax: 303.730.1966  
nb-customerservice@bio-techne.com

### **Bio-Techne Canada**

21 Canmotor Ave  
Toronto, ON M8Z 4E6  
Canada  
Phone: 905.827.6400  
Toll Free: 855.668.8722  
Fax: 905.827.6402  
canada.inquires@bio-techne.com

### **Bio-Techne Ltd**

19 Barton Lane  
Abingdon Science Park  
Abingdon, OX14 3NB, United Kingdom  
Phone: (44) (0) 1235 529449  
Free Phone: 0800 37 34 15  
Fax: (44) (0) 1235 533420  
info.EMEA@bio-techne.com

### **General Contact Information**

www.novusbio.com  
Technical Support: nb-technical@bio-techne.com  
Orders: nb-customerservice@bio-techne.com  
General: novus@novusbio.com

### **Products Related to NB100-56485**

---

NB820-59177	Human Brain Whole Tissue Lysate (Adult Whole Normal)
HAF008	Goat anti-Rabbit IgG Secondary Antibody [HRP]
NB7160	Goat anti-Rabbit IgG (H+L) Secondary Antibody [HRP]
NBP2-24891	Rabbit IgG Isotype Control

---

### **Limitations**

This product is for research use only and is not approved for use in humans or in clinical diagnosis. Primary Antibodies are guaranteed for 1 year from date of receipt.

For more information on our 100% guarantee, please visit [www.novusbio.com/guarantee](http://www.novusbio.com/guarantee)

Earn gift cards/discounts by submitting a review: [www.novusbio.com/reviews/submit/NB100-56485](http://www.novusbio.com/reviews/submit/NB100-56485)

Earn gift cards/discounts by submitting a publication using this product:  
[www.novusbio.com/publications](http://www.novusbio.com/publications)

