

Product Datasheet

beta Tubulin Antibody - BSA Free NB100-56459

Unit Size: 0.1 mg

Store at 4C short term. Aliquot and store at -20C long term. Avoid freeze-thaw cycles.

www.novusbio.com



technical@novusbio.com

Publications: 11

Protocols, Publications, Related Products, Reviews, Research Tools and Images at:
www.novusbio.com/NB100-56459

Updated 2/21/2025 v.20.1

Earn rewards for product
reviews and publications.

Submit a publication at www.novusbio.com/publications

Submit a review at www.novusbio.com/reviews/destination/NB100-56459



NB100-56459

beta Tubulin Antibody - BSA Free

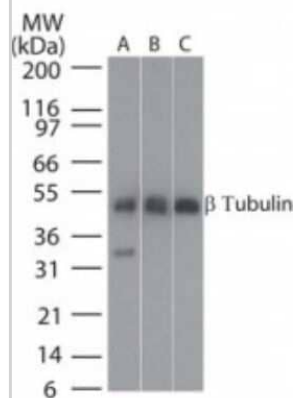
Product Information	
Unit Size	0.1 mg
Concentration	1.0 mg/ml
Storage	Store at 4C short term. Aliquot and store at -20C long term. Avoid freeze-thaw cycles.
Clonality	Polyclonal
Preservative	0.05% Sodium Azide
Isotype	IgG
Purity	Protein G purified
Buffer	PBS

Product Description	
Host	Rabbit
Gene ID	203068
Gene Symbol	TUBB
Species	Human, Mouse, Rat, Bovine, Canine, Chicken, Feline, Monkey, Primate, Xenopus
Reactivity Notes	Feline reactivity reported in scientific literature (PMID: 25668772).
Specificity/Sensitivity	The amino acid sequence used as immunogen has 100% identity in beta I and beta II tubulin.
Immunogen	A synthetic peptide corresponding to a portion of amino acids 400-450 of human b-tubulin was used as immunogen for this antibody, GenBank no. gi 27227551 gb AAN85571.1 .

Product Application Details	
Applications	Western Blot, Simple Western, Immunohistochemistry, Immunohistochemistry-Paraffin
Recommended Dilutions	Western Blot 0.1 - 1 ug/mL, Simple Western 1:50, Immunohistochemistry 1:100 - 1:1000, Immunohistochemistry-Paraffin 5 - 10 ug/mL
Application Notes	In Simple Western only 10 - 15 uL of the recommended dilution is used per data point. See Simple Western Antibody Database for Simple Western validation: Tested in Human Brain lysate 0.5 mg/mL, separated by Size, antibody dilution of 1:50, apparent MW was 55 kDa.

Images

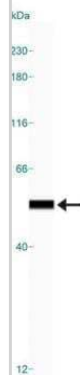
Western Blot: beta Tubulin Antibody [NB100-56459] - Analysis of beta-Tubulin in A: human brain, B: mouse brain and C: rat brain tissue lysates using the this antibody at 25 ug/mL.



Immunohistochemistry-Paraffin: beta Tubulin Antibody [NB100-56459] - Human kidney tubules stained with beta-Tubulin antibody at 10 ug/mL. Staining of formalin-fixed tissues is enhanced by boiling tissue sections in 10 mM sodium citrate buffer, pH 6.0 for 10-20 min followed by cooling at RT for 20 min.



Simple Western: beta Tubulin Antibody [NB100-56459] - Image shows a specific band for beta Tubulin in 0.5 mg/mL of Human Brain lysate. This experiment was performed under reducing conditions using the 12-230 kDa separation system.



Publications

Cheramangalam RN, Anand T, Pandey P et al. Bendless is essential for PINK1-Park mediated Mitofusins degradation under mitochondrial stress caused by loss of LRPPRC PLoS genetics 2023-04-01 [PMID: 37098042] (WB, Drosophila)

Lima C, Andrade-Barros AI, Bernardo JTG et al. Natterin-Induced Neutrophilia Is Dependent on cGAS/STING Activation via Type I IFN Signaling Pathway International journal of molecular sciences [PMID: 35408954] (WB, Mouse)

Krisko TI, Nicholls HT, Bare CJ et al. Dissociation of Adaptive Thermogenesis from Glucose Homeostasis in Microbiome-Deficient Mice Cell Metab. 2020-02-12 [PMID: 32084379]

R Goulet C, Bernard G, Tremblay S et al. Exosomes Induce Fibroblast Differentiation into Cancer-associated Fibroblasts through TGF β Signaling. Mol. Cancer Res. 2018-04-10 [PMID: 29636362] (WB)

Chen M, Arumugam TV, Leanage G et al. Disease-modifying effect of intravenous immunoglobulin in an experimental model of epilepsy Sci Rep. 2017-01-11 [PMID: 28074934] (WB, Mouse)

Williams K, Balsor JL, Beshara S et al. Experience-dependent central vision deficits: Neurobiology and visual acuity Vision Res. 2015-02-07 [PMID: 25668772] (WB, Feline)

Details:

beta-Tubulin antibody used at 1:4000 dilution in WB application for analysing 25ug lysates of the central, peripheral, and monocular regions of visual cortex /V1 section obtained from the brain tissues of 5 week old Feline/Cats which were subjected to 6 hours to 7 days of monocular deprivation (Fig. 1).

Murphy KM, Balsor J, Beshara S et al. A high-throughput semi-automated preparation for filtered synaptoneurosomes J. Neurosci. Methods. 2014-07-02 [PMID: 24997341] (WB, Canine, Rat)

Details:

beta Tubulin antibody used at 1:4000 dilution in WB on whole homogenate and synaptoneurosomes from somatosensory cortex of Long Evans rats and adult cat/feline frontal cortex.

Kamal A, Sreekanth K, Kumar PP et al. Synthesis and potential cytotoxic activity of new phenanthrylphenol-pyrrolobenzodiazepines. Eur J Med Chem. 2010-06-01 [PMID: 20171761]

Details:

Products cited for western blot: 1. PARP (IMG-401A): MCF-7 cells treated with numerous compounds, Fig 7. 2. B-Tubulin (IMG-5180A): MCF-7 cells treated with PP-PBDs, Fig 6 and Fig 7. 3. Cytochrome C (IMG-101A): MCF-7 cells treated with numerous compounds,

Boniface K, Diveu C, Morel F et al. Oncostatin M secreted by skin infiltrating T lymphocytes is a potent keratinocyte activator involved in skin inflammation. J Immunol. 2007-04-01 [PMID: 17372020]

Li R, Guan H, Yang K. Neuropeptide Y potentiates beta-adrenergic stimulation of lipolysis in 3T3-L1 adipocytes. Regul Pept. 2012-10-10 [PMID: 22750277]

Saha T. LAMP2A overexpression in breast tumors promotes cancer cell survival via chaperone-mediated autophagy. Autophagy. 2012-11-01 [PMID: 22874552]



Novus Biologicals USA

10730 E. Briarwood Avenue
Centennial, CO 80112
USA
Phone: 303.730.1950
Toll Free: 1.888.506.6887
Fax: 303.730.1966
nb-customerservice@bio-techne.com

Bio-Techne Canada

21 Canmotor Ave
Toronto, ON M8Z 4E6
Canada
Phone: 905.827.6400
Toll Free: 855.668.8722
Fax: 905.827.6402
canada.inquires@bio-techne.com

Bio-Techne Ltd

19 Barton Lane
Abingdon Science Park
Abingdon, OX14 3NB, United Kingdom
Phone: (44) (0) 1235 529449
Free Phone: 0800 37 34 15
Fax: (44) (0) 1235 533420
info.EMEA@bio-techne.com

General Contact Information

www.novusbio.com
Technical Support: nb-technical@bio-techne.com
Orders: nb-customerservice@bio-techne.com
General: novus@novusbio.com

Products Related to NB100-56459

NB820-59177	Human Brain Whole Tissue Lysate (Adult Whole Normal)
HAF008	Goat anti-Rabbit IgG Secondary Antibody [HRP]
NB7160	Goat anti-Rabbit IgG (H+L) Secondary Antibody [HRP]
NBP2-24891	Rabbit IgG Isotype Control

Limitations

This product is for research use only and is not approved for use in humans or in clinical diagnosis. Primary Antibodies are guaranteed for 1 year from date of receipt.

For more information on our 100% guarantee, please visit www.novusbio.com/guarantee

Earn gift cards/discounts by submitting a review: www.novusbio.com/reviews/submit/NB100-56459

Earn gift cards/discounts by submitting a publication using this product:
www.novusbio.com/publications

