

Product Datasheet

IL-20R alpha Antibody - BSA Free NB100-56409

Unit Size: 0.1 mg

Store at 4C short term. Aliquot and store at -20C long term. Avoid freeze-thaw cycles.

www.novusbio.com



technical@novusbio.com

Protocols, Publications, Related Products, Reviews, Research Tools and Images at:
www.novusbio.com/NB100-56409

Updated 2/21/2025 v.20.1

Earn rewards for product
reviews and publications.

Submit a publication at www.novusbio.com/publications

Submit a review at www.novusbio.com/reviews/destination/NB100-56409



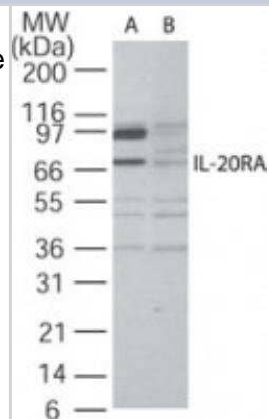
NB100-56409

IL-20R alpha Antibody - BSA Free

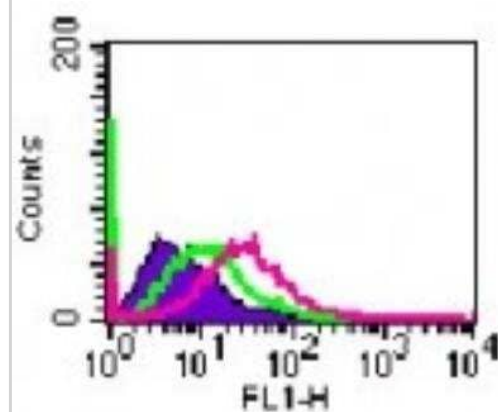
Product Information	
Unit Size	0.1 mg
Concentration	1.0 mg/ml
Storage	Store at 4C short term. Aliquot and store at -20C long term. Avoid freeze-thaw cycles.
Clonality	Polyclonal
Preservative	0.05% Sodium Azide
Isotype	IgG
Purity	Protein G purified
Buffer	PBS containing 0.2% gelatin
Product Description	
Host	Rabbit
Gene ID	53832
Gene Symbol	IL20RA
Species	Human, Mouse
Reactivity Notes	The amino acid sequence used as immunogen is 100% homologous in human and chimp, and 82% homologous in mouse and rat.
Specificity/Sensitivity	Both the expect ~70 kD band and an unknown ~90 kD band are seen in A375 cell lysate and are blocked by the immunizing peptide. The ~90 kD band alone is seen in A431 cell lysate, and it is also blocked by the immunizing peptide. This antibody was made against a portion of the extracellular domain of IL-20RA. Permeabilization of the cells during testing may affect antibody binding.
Immunogen	Amino acids 159-175 of human IL-20 receptor alpha protein were used as the immunogen.
Product Application Details	
Applications	Western Blot, Flow Cytometry
Recommended Dilutions	Western Blot 1-3 ug/ml, Flow Cytometry 2-5 ug/10 ⁶ cells

Images

Western Blot: IL-20 R alpha Antibody [NB100-56409] - Analysis of IL-20 R alpha Antibody in A375 cell lysate in the (A) absence and (B) presence of blocking peptide using this antibody at 2 ug/ml.



Flow Cytometry: IL-20 R alpha Antibody [NB100-56409] - Cell-surface flow cytometry analysis of IL-20 R alpha Antibody in A375 cells using this antibody at 5 ug/10⁶ cells. The shaded histogram represents cells only, green represents isotype control, and purple represents anti-IL-20 R alpha Antibody





Novus Biologicals USA

10730 E. Briarwood Avenue
Centennial, CO 80112
USA
Phone: 303.730.1950
Toll Free: 1.888.506.6887
Fax: 303.730.1966
nb-customerservice@bio-techne.com

Bio-Techne Canada

21 Canmotor Ave
Toronto, ON M8Z 4E6
Canada
Phone: 905.827.6400
Toll Free: 855.668.8722
Fax: 905.827.6402
canada.inquires@bio-techne.com

Bio-Techne Ltd

19 Barton Lane
Abingdon Science Park
Abingdon, OX14 3NB, United Kingdom
Phone: (44) (0) 1235 529449
Free Phone: 0800 37 34 15
Fax: (44) (0) 1235 533420
info.EMEA@bio-techne.com

General Contact Information

www.novusbio.com
Technical Support: nb-technical@bio-techne.com
Orders: nb-customerservice@bio-techne.com
General: novus@novusbio.com

Products Related to NB100-56409

HAF008	Goat anti-Rabbit IgG Secondary Antibody [HRP]
NB7160	Goat anti-Rabbit IgG (H+L) Secondary Antibody [HRP]
NBP2-24891	Rabbit IgG Isotype Control
NBP1-89633PEP	IL-20R alpha Recombinant Protein Antigen

Limitations

This product is for research use only and is not approved for use in humans or in clinical diagnosis. Primary Antibodies are guaranteed for 1 year from date of receipt.

For more information on our 100% guarantee, please visit www.novusbio.com/guarantee

Earn gift cards/discounts by submitting a review: www.novusbio.com/reviews/submit/NB100-56409

Earn gift cards/discounts by submitting a publication using this product:
www.novusbio.com/publications

