

# Product Datasheet

## SENP1 Antibody - BSA Free

### NB100-56405

Unit Size: 0.1 mg

Store at -20C. Avoid freeze-thaw cycles.

[www.novusbio.com](http://www.novusbio.com)



[technical@novusbio.com](mailto:technical@novusbio.com)

#### Publications: 3

Protocols, Publications, Related Products, Reviews, Research Tools and Images at:  
[www.novusbio.com/NB100-56405](http://www.novusbio.com/NB100-56405)

Updated 4/13/2025 v.20.1

Earn rewards for product  
reviews and publications.

Submit a publication at [www.novusbio.com/publications](http://www.novusbio.com/publications)

Submit a review at [www.novusbio.com/reviews/destination/NB100-56405](http://www.novusbio.com/reviews/destination/NB100-56405)



**NB100-56405**

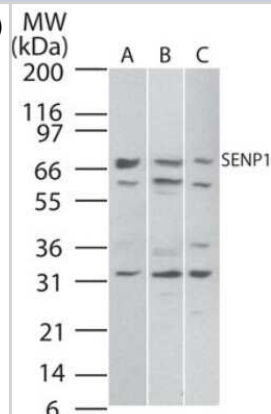
SENP1 Antibody - BSA Free

Product Information	
Unit Size	0.1 mg
Concentration	1.0 mg/ml
Storage	Store at -20C. Avoid freeze-thaw cycles.
Clonality	Polyclonal
Preservative	0.05% Sodium Azide
Isotype	IgG
Purity	Protein G purified
Buffer	PBS
Product Description	
Host	Rabbit
Gene ID	29843
Gene Symbol	SENP1
Species	Human, Mouse
Immunogen	This antibody was developed against a synthetic peptide corresponding to aa 578-590 of human SENP1.
Product Application Details	
Applications	Western Blot, Simple Western, Immunocytochemistry/ Immunofluorescence, Immunohistochemistry, Immunohistochemistry-Paraffin
Recommended Dilutions	Western Blot 3 - 5 ug/ml, Simple Western 1:100, Immunohistochemistry, Immunocytochemistry/ Immunofluorescence reported in scientific literature (PMID 27882949), Immunohistochemistry-Paraffin reported in scientific literature (PMID 27882949)
Application Notes	A 66 kDa band is observed. In human and mouse, SENP1 has different isoforms between 664 and 699 amino acids long. Additional bands seen in western blot may represent other SUMOlated proteins. In Simple Western only 10 - 15 uL of the recommended dilution is used per data point. See <a href="#">Simple Western Antibody Database</a> for Simple Western validation: Tested in HeLa lysate 0.5 mg/mL, separated by Size, antibody dilution of 1:50, apparent MW was 74 kDa.



## Images

Western Blot: SENP1 Antibody [NB100-56405] - analysis of SENP1 in A) Daudi, B) HeLa and C) NIH 3T3 cell lysate using this antibody.



Simple Western: SENP1 Antibody [NB100-56405] - Simple Western lane view shows a specific band for SENP1 in 0.5 mg/ml of HeLa lysate. This experiment was performed under reducing conditions using the 12-230 kDa separation system.



## Publications

Zhang H, Wang Y, Zhu A et al. SUMO-specific protease 1 protects neurons from apoptotic death during transient brain ischemia/reperfusion. *Cell Death Dis.* 2016-11-24 [PMID: 27882949] (WB, IHC-P, ICC/IF, Mouse)

Park J, Seo T, Kim H, Choe J. Sumoylation of the novel protein hRIP{beta} is involved in replication protein A deposition in PML nuclear bodies. *Mol Cell Biol.* 2005-09-01 [PMID: 16135809]

La Salle S, Sun F, Zhang XD et al. Developmental control of sumoylation pathway proteins in mouse male germ cells. *Dev Biol.* 2008-09-01 [PMID: 18602382] (WB)

Details:

SAE2 (IMG-5111A), PIASg (IMG-290), SENP1 CT (IMG-521). WB: Male germ cells; leptotene/zygotene, prepubertal pachytene, and adult pachytene spermatocytes, Fig 5.



### **Novus Biologicals USA**

10730 E. Briarwood Avenue  
Centennial, CO 80112  
USA  
Phone: 303.730.1950  
Toll Free: 1.888.506.6887  
Fax: 303.730.1966  
nb-customerservice@bio-techne.com

### **Bio-Techne Canada**

21 Canmotor Ave  
Toronto, ON M8Z 4E6  
Canada  
Phone: 905.827.6400  
Toll Free: 855.668.8722  
Fax: 905.827.6402  
canada.inquires@bio-techne.com

### **Bio-Techne Ltd**

19 Barton Lane  
Abingdon Science Park  
Abingdon, OX14 3NB, United Kingdom  
Phone: (44) (0) 1235 529449  
Free Phone: 0800 37 34 15  
Fax: (44) (0) 1235 533420  
info.EMEA@bio-techne.com

### **General Contact Information**

www.novusbio.com  
Technical Support: nb-technical@bio-techne.com  
Orders: nb-customerservice@bio-techne.com  
General: novus@novusbio.com

### **Products Related to NB100-56405**

---

NB800-PC2	Jurkat Whole Cell Lysate
HAF008	Goat anti-Rabbit IgG Secondary Antibody [HRP]
NB7160	Goat anti-Rabbit IgG (H+L) Secondary Antibody [HRP]
NBP2-24891	Rabbit IgG Isotype Control

---

### **Limitations**

This product is for research use only and is not approved for use in humans or in clinical diagnosis. Primary Antibodies are guaranteed for 1 year from date of receipt.

For more information on our 100% guarantee, please visit [www.novusbio.com/guarantee](http://www.novusbio.com/guarantee)

Earn gift cards/discounts by submitting a review: [www.novusbio.com/reviews/submit/NB100-56405](http://www.novusbio.com/reviews/submit/NB100-56405)

Earn gift cards/discounts by submitting a publication using this product:  
[www.novusbio.com/publications](http://www.novusbio.com/publications)

