

Product Datasheet

Carm1 Antibody NB100-56374

Unit Size: 0.1 mg

Store at 4C short term. Aliquot and store at -20C long term. Avoid freeze-thaw cycles.

www.novusbio.com



technical@novusbio.com

Publications: 1

Protocols, Publications, Related Products, Reviews, Research Tools and Images at:
www.novusbio.com/NB100-56374

Updated 10/23/2024 v.20.1

Earn rewards for product
reviews and publications.

Submit a publication at www.novusbio.com/publications

Submit a review at www.novusbio.com/reviews/destination/NB100-56374



NB100-56374

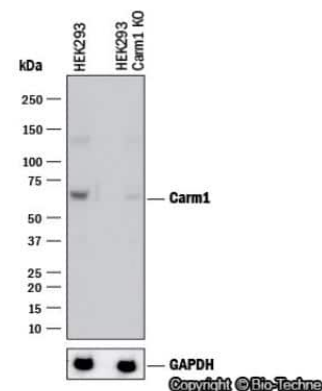
Carm1 Antibody

Product Information	
Unit Size	0.1 mg
Concentration	0.5 mg/ml
Storage	Store at 4C short term. Aliquot and store at -20C long term. Avoid freeze-thaw cycles.
Clonality	Polyclonal
Preservative	0.05% Sodium Azide
Isotype	IgG
Purity	Protein G purified
Buffer	PBS containing 0.05% BSA
Product Description	
Host	Rabbit
Gene ID	10498
Gene Symbol	CARM1
Species	Human
Immunogen	This antibody was developed against a mixture of synthetic peptides containing amino acids 45-69 and 595-608 of human PRMT4.
Product Application Details	
Applications	Western Blot, Immunocytochemistry/ Immunofluorescence, Immunohistochemistry, Immunohistochemistry-Paraffin, Knockout Validated
Recommended Dilutions	Western Blot 0.5-2 ug/ml, Immunohistochemistry, Immunocytochemistry/ Immunofluorescence 2-5 ug/ml, Immunohistochemistry-Paraffin, Knockout Validated

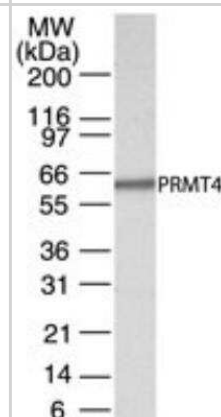


Images

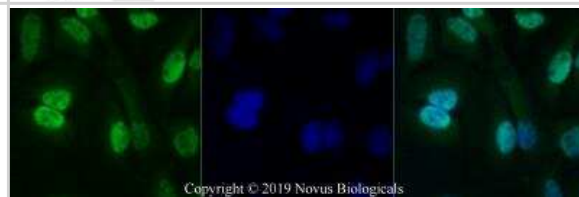
Knockout Validated: Carm1 Antibody [NB100-56374] - Western blot shows lysates of HEK293T human embryonic kidney parental cell line and Carm1 knockout (KO) HEK293T cell line. PVDF membrane was probed with 0.5 ug/ml of Rabbit Anti-Human Carm1 Polyclonal Antibody (Catalog # NB100-56374) followed by HRP-conjugated Anti-Rabbit IgG Secondary Antibody (Catalog #HAF008). Specific band was detected for Carm1 at approximately 65 kDa (as indicated) in the parental HEK293T cell line, but is not detectable in the knockout HEK293T cell line. This experiment was conducted under reducing conditions.



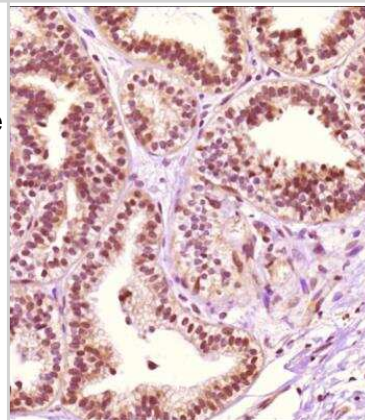
Western Blot: Carm1 Antibody [NB100-56374] - Analysis of PRMT4 in cell lysates from HeLa cells using this antibody. 5 ug/ml. Twenty ug of HeLa cell lysate was loaded per well of mini gel.



Immunocytochemistry/Immunofluorescence: Carm1 Antibody [NB100-56374] - HeLa cells were fixed for 10 minutes using 10% formalin and then permeabilized for 5 minutes using 1X PBS + 0.5% Triton-X100. The cells were incubated with anti-Carm1 at 5 ug/ml overnight at 4C and detected with an anti-rabbit Dylight 488 (Green) at a 1:500 dilution. Nuclei were counterstained with DAPI (Blue). Cells were imaged using a 40X objective.



Immunohistochemistry-Paraffin: Carm1 Antibody [NB100-56374] - Analysis of a FFPE tissue section of the human breast carcinoma using 1:200 dilution of Carm1 antibody (NB100-56374). The signal was developed using HRP-DAB method which followed counterstaining of the cells with hematoxylin. The antibody generated nuclear and cytoplasmic staining.



Publications

Herrmann F, Pably P, Eckerich C et al. Human protein arginine methyltransferases in vivo--distinct properties of eight canonical members of the PRMT family. J Cell Sci. 2009-03-01 [PMID: 19208762] (WB)

Details:

1. IMG-496 (PRMT4): WB (HEk 293 cells), Fig. 1C,B. 2. IMG-506 (PRMT6): WB (HEk 293 cells), Fig. 1C,B.





Novus Biologicals USA

10730 E. Briarwood Avenue
Centennial, CO 80112
USA
Phone: 303.730.1950
Toll Free: 1.888.506.6887
Fax: 303.730.1966
nb-customerservice@bio-techne.com

Bio-Techne Canada

21 Canmotor Ave
Toronto, ON M8Z 4E6
Canada
Phone: 905.827.6400
Toll Free: 855.668.8722
Fax: 905.827.6402
canada.inquires@bio-techne.com

Bio-Techne Ltd

19 Barton Lane
Abingdon Science Park
Abingdon, OX14 3NB, United Kingdom
Phone: (44) (0) 1235 529449
Free Phone: 0800 37 34 15
Fax: (44) (0) 1235 533420
info.EMEA@bio-techne.com

General Contact Information

www.novusbio.com
Technical Support: nb-technical@bio-techne.com
Orders: nb-customerservice@bio-techne.com
General: novus@novusbio.com

Products Related to NB100-56374

NB800-PC1	HeLa Whole Cell Lysate
HAF008	Goat anti-Rabbit IgG Secondary Antibody [HRP]
NB7160	Goat anti-Rabbit IgG (H+L) Secondary Antibody [HRP]
NBP2-24891	Rabbit IgG Isotype Control

Limitations

This product is for research use only and is not approved for use in humans or in clinical diagnosis. Primary Antibodies are guaranteed for 1 year from date of receipt.

For more information on our 100% guarantee, please visit www.novusbio.com/guarantee

Earn gift cards/discounts by submitting a review: www.novusbio.com/reviews/submit/NB100-56374

Earn gift cards/discounts by submitting a publication using this product:
www.novusbio.com/publications

