

# Product Datasheet

## CCR5 Antibody NB100-56337

Unit Size: 0.1 mg

Store at 4C short term. Aliquot and store at -20C long term. Avoid freeze-thaw cycles.

[www.novusbio.com](http://www.novusbio.com)



[technical@novusbio.com](mailto:technical@novusbio.com)

Protocols, Publications, Related Products, Reviews, Research Tools and Images at:  
[www.novusbio.com/NB100-56337](http://www.novusbio.com/NB100-56337)

Updated 10/23/2024 v.20.1

Earn rewards for product  
reviews and publications.

Submit a publication at [www.novusbio.com/publications](http://www.novusbio.com/publications)

Submit a review at [www.novusbio.com/reviews/destination/NB100-56337](http://www.novusbio.com/reviews/destination/NB100-56337)



**NB100-56337**

CCR5 Antibody

| Product Information |  |
|---------------------|--|
| Unit Size           | 0.1 mg   |
| Concentration       | 0.5 mg/ml  |
| Storage             | Store at 4C short term. Aliquot and store at -20C long term. Avoid freeze-thaw cycles. |
| Clonality           | Polyclonal   |
| Preservative        | 0.05% Sodium Azide   |
| Isotype             | IgG  |
| Purity              | Protein G purified   |
| Buffer              | PBS containing 0.05% BSA   |

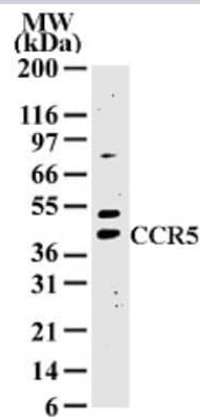
| Product Description |  |
|---------------------|--|
| Host                | Rabbit   |
| Gene ID             | 1234   |
| Gene Symbol         | CCR5   |
| Species             | Human  |
| Immunogen           | A synthetic peptide corresponding to amino acids within 300 and 350 of human CCR5 was used as immunogen. |

| Product Application Details |   |
|-----------------------------|---|
| Applications                | Western Blot, Simple Western                |
| Recommended Dilutions       | Western Blot 1-3 ug/ml, Simple Western 1:10 |
| Application Notes           | In MCF-7, a 42 kDa band should be observed. |

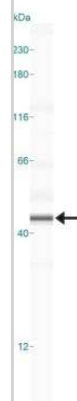


**Images**

Western Blot: CCR5 Antibody [NB100-56337] - Analysis of 10 ug of total cell lysate from MCF-7 cells with at 2 ug/ml dilution



Simple Western: CCR5 Antibody [NB100-56337] - Lane view shows a specific band for CCR5 in 0.5 mg/ml of MCF-7 lysate. This experiment was performed under reducing conditions using the 12-230 kDa separation system.





### **Novus Biologicals USA**

10730 E. Briarwood Avenue  
Centennial, CO 80112  
USA  
Phone: 303.730.1950  
Toll Free: 1.888.506.6887  
Fax: 303.730.1966  
nb-customerservice@bio-techne.com

### **Bio-Techne Canada**

21 Canmotor Ave  
Toronto, ON M8Z 4E6  
Canada  
Phone: 905.827.6400  
Toll Free: 855.668.8722  
Fax: 905.827.6402  
canada.inquires@bio-techne.com

### **Bio-Techne Ltd**

19 Barton Lane  
Abingdon Science Park  
Abingdon, OX14 3NB, United Kingdom  
Phone: (44) (0) 1235 529449  
Free Phone: 0800 37 34 15  
Fax: (44) (0) 1235 533420  
info.EMEA@bio-techne.com

### **General Contact Information**

www.novusbio.com  
Technical Support: nb-technical@bio-techne.com  
Orders: nb-customerservice@bio-techne.com  
General: novus@novusbio.com

### **Products Related to NB100-56337**

---

|             |   |
|-------------|---|
| NB820-59465 | MCF-7 Whole Cell Lysate                             |
| HAF008      | Goat anti-Rabbit IgG Secondary Antibody [HRP]       |
| NB7160      | Goat anti-Rabbit IgG (H+L) Secondary Antibody [HRP] |
| NBP2-24891  | Rabbit IgG Isotype Control                          |

---

### **Limitations**

This product is for research use only and is not approved for use in humans or in clinical diagnosis. Primary Antibodies are guaranteed for 1 year from date of receipt.

For more information on our 100% guarantee, please visit [www.novusbio.com/guarantee](http://www.novusbio.com/guarantee)

Earn gift cards/discounts by submitting a review: [www.novusbio.com/reviews/submit/NB100-56337](http://www.novusbio.com/reviews/submit/NB100-56337)

Earn gift cards/discounts by submitting a publication using this product:  
[www.novusbio.com/publications](http://www.novusbio.com/publications)

