

Product Datasheet

CCR1 Antibody - BSA Free NB100-56334

Unit Size: 0.1 mg

Store at 4C short term. Aliquot and store at -20C long term. Avoid freeze-thaw cycles.

www.novusbio.com



technical@novusbio.com

Publications: 8

Protocols, Publications, Related Products, Reviews, Research Tools and Images at:
www.novusbio.com/NB100-56334

Updated 2/21/2025 v.20.1

Earn rewards for product
reviews and publications.

Submit a publication at www.novusbio.com/publications

Submit a review at www.novusbio.com/reviews/destination/NB100-56334



NB100-56334

CCR1 Antibody - BSA Free

Product Information

Unit Size	0.1 mg
Concentration	1.0 mg/ml
Storage	Store at 4C short term. Aliquot and store at -20C long term. Avoid freeze-thaw cycles.
Clonality	Polyclonal
Preservative	0.02% Sodium Azide
Isotype	IgG
Purity	Immunogen affinity purified
Buffer	PBS

Product Description

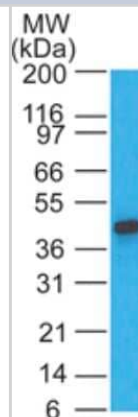
Host	Rabbit
Gene ID	1230
Gene Symbol	CCR1
Species	Human, Mouse, Rabbit
Reactivity Notes	Rabbit reactivity reported in scientific literature (PMID: 20371596).
Immunogen	This antibody was raised against a synthetic peptide of human CCR1 protein.

Product Application Details

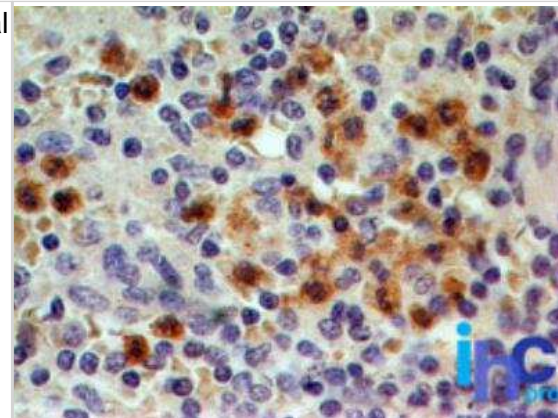
Applications	Western Blot, Flow Cytometry, Flow (Intracellular), Immunocytochemistry/Immunofluorescence, Immunohistochemistry, Immunohistochemistry-Frozen, Immunohistochemistry-Paraffin
Recommended Dilutions	Western Blot 1-3 ug/ml, Flow Cytometry 5-10 ul/test, Immunohistochemistry, Immunocytochemistry/ Immunofluorescence, Immunohistochemistry-Paraffin 5 ug/ml, Immunohistochemistry-Frozen reported in scientific literature (PMID 15860797), Flow (Intracellular) reported in scientific literature (PMID 20371596)
Application Notes	In A375, a 42 kDa band should be observed.

Images

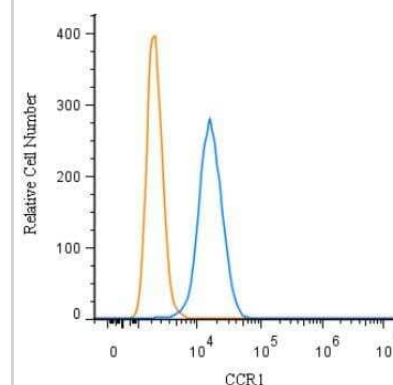
Western Blot: CCR1 Antibody [NB100-56334] - A375 lysate probed with this antibody at 2 ug/ml dilution.



Immunohistochemistry-Paraffin: CCR1 Antibody [NB100-56334] - Normal human spleen tissue stained with this at 5 ug/ml, peroxidase-conjugate and DAB chromogen. Note granulocyte staining.

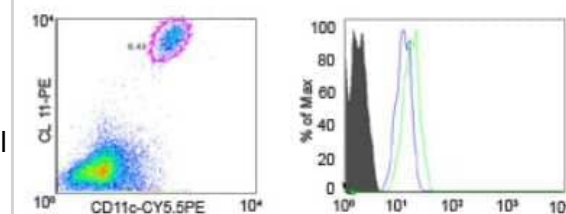


Flow (Intracellular): CCR1 Antibody [NB100-56334] - An intracellular stain was performed on Raw264.7 cells with CCR1 Antibody NB100-56334 (blue) and a matched isotype control NBP2-24891 (orange). Cells were fixed with 4% PFA and then permeabilized with 0.1% saponin. Cells were incubated in an antibody dilution of 1.0 ug/mL for 30 minutes at room temperature, followed by Rabbit IgG (H+L) Cross-Adsorbed Secondary Antibody, Dylight 550 (SA5-10033, Thermo Fisher).

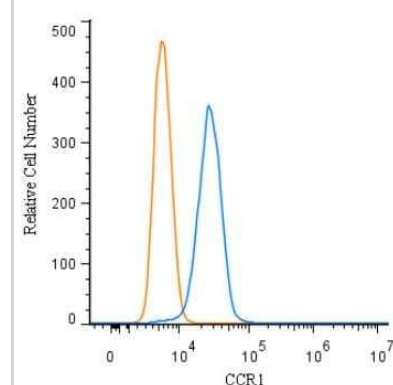


Copyright © 2021 Novus Biologicals

Flow Cytometry: CCR1 Antibody [NB100-56334] - Image 1: Surface staining of mouse primary epidermal cells (B-6 mice, 30wks) with CL 11-PE, CD11c PE-Cy5, and this antibody with CY5 goat anti rabbit secondary. Image 2: CD11c+ CL II+ cells (Langerans), stained with rabbit isotype control (shaded histogram) were analyzed for CCR1 at 5 ul (blue histogram) and 10 ul (green histogram). Data kindly provided by Corey Parlet, University of Iowa.



Flow (Intracellular): CCR1 Antibody [NB100-56334] - An intracellular stain was performed on U-87 cells with CCR1 Antibody NB100-56334 (blue) and a matched isotype control NBP2-24891 (orange). Cells were fixed with 4% PFA and then permeabilized with 0.1% saponin. Cells were incubated in an antibody dilution of 1.0 ug/mL for 30 minutes at room temperature, followed by Rabbit IgG (H+L) Cross-Adsorbed Secondary Antibody, Dylight 550 (SA5-10033, Thermo Fisher).



Copyright © 2021 Novus Biologicals

Publications

Madi A, Sheinin R, Salomon K et al. interFLOW: maximum flow framework for the identification of factors mediating the signaling convergence of multiple receptors Research Square 2023-10-31 (IHC, Mouse)

Messex J, Adams K, Hawkins W et al. Oncogenic Kras-Mediated Cytokine CCL15 Regulates Pancreatic Cancer Cell Migration and Invasion through ROS Cancers 2022-04-26 [PMID: 35565279] (IHC-P, Human)

Shin SY, Lee DH, Lee J et al. C-C motif chemokine receptor 1 (CCR1) is a target of the EGF-AKT-mTOR-STAT3 signaling axis in breast cancer cells. Oncotarget 2017-11-07 [PMID: 29212252] (IF/IHC, Human)

Soehnlein Oliver, Drechsler Maik, Doring Yvonne et al. Distinct functions of chemokine receptor axes in the atherogenic mobilization and recruitment of classical monocytes. EMBO Mol Med. 2013-03-01 [PMID: 23417922] (ICC/IF, Mouse)

Parlet CP, Schlueter AJ. Mechanisms by Which Chronic Ethanol Feeding Impairs the Migratory Capacity of Cutaneous Dendritic Cells. Alcohol Clin Exp Res 2013-12-01 [PMID: 23895590] (FLOW, Mouse)

Choi SW, Hildebrandt GC, Olkiewicz KM et al. CCR1/CCL5 (RANTES) receptor-ligand interactions modulate allogeneic T-cell responses and graft-versus-host disease following stem-cell transplantation. Blood. 2007-11-01 [PMID: 17641205] (Flow-CS)

Details:

Flow (Cell Surface): Fig 1C (splenocytes harvested from naive donor mice and transplant recipient mice). Splenic CD4+ and CD8+ T-cell expression of CCR1 was analyzed.

Vesosky B, Rottinghaus EK, Stromberg P et al. CCL5 participates in early protection against Mycobacterium tuberculosis. J Leukoc Biol. 2010-06-01 [PMID: 20371596] (Flow Cytometry Control, Flow - IC, Rabbit)

Demoule A, Divangahi M, Danialou G et al. Expression and regulation of CC class chemokines in the dystrophic (mdx) diaphragm. Am J Respir Cell Mol Biol. 2005-08-01 [PMID: 15860797] (IHC-Fr, Mouse)





Novus Biologicals USA

10730 E. Briarwood Avenue
Centennial, CO 80112
USA
Phone: 303.730.1950
Toll Free: 1.888.506.6887
Fax: 303.730.1966
nb-customerservice@bio-techne.com

Bio-Techne Canada

21 Canmotor Ave
Toronto, ON M8Z 4E6
Canada
Phone: 905.827.6400
Toll Free: 855.668.8722
Fax: 905.827.6402
canada.inquires@bio-techne.com

Bio-Techne Ltd

19 Barton Lane
Abingdon Science Park
Abingdon, OX14 3NB, United Kingdom
Phone: (44) (0) 1235 529449
Free Phone: 0800 37 34 15
Fax: (44) (0) 1235 533420
info.EMEA@bio-techne.com

General Contact Information

www.novusbio.com
Technical Support: nb-technical@bio-techne.com
Orders: nb-customerservice@bio-techne.com
General: novus@novusbio.com

Products Related to NB100-56334

NBL1-08887	CCR1 Overexpression Lysate
HAF008	Goat anti-Rabbit IgG Secondary Antibody [HRP]
NB7160	Goat anti-Rabbit IgG (H+L) Secondary Antibody [HRP]
NBP2-24891	Rabbit IgG Isotype Control

Limitations

This product is for research use only and is not approved for use in humans or in clinical diagnosis. Primary Antibodies are guaranteed for 1 year from date of receipt.

For more information on our 100% guarantee, please visit www.novusbio.com/guarantee

Earn gift cards/discounts by submitting a review: www.novusbio.com/reviews/submit/NB100-56334

Earn gift cards/discounts by submitting a publication using this product:
www.novusbio.com/publications

