

# Product Datasheet

## MeCP2 Antibody - BSA Free NB100-56326

Unit Size: 0.1 mg

Store at 4C short term. Aliquot and store at -20C long term. Avoid freeze-thaw cycles.

[www.novusbio.com](http://www.novusbio.com)



[technical@novusbio.com](mailto:technical@novusbio.com)

### Publications: 1

Protocols, Publications, Related Products, Reviews, Research Tools and Images at:  
[www.novusbio.com/NB100-56326](http://www.novusbio.com/NB100-56326)

Updated 2/21/2025 v.20.1

Earn rewards for product  
reviews and publications.

Submit a publication at [www.novusbio.com/publications](http://www.novusbio.com/publications)

Submit a review at [www.novusbio.com/reviews/destination/NB100-56326](http://www.novusbio.com/reviews/destination/NB100-56326)



**NB100-56326**

MeCP2 Antibody - BSA Free

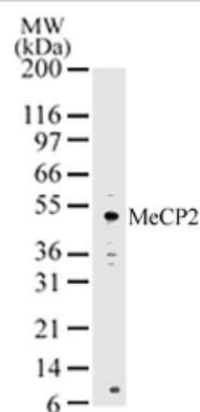
Product Information	
Unit Size	0.1 mg
Concentration	0.5 mg/ml
Storage	Store at 4C short term. Aliquot and store at -20C long term. Avoid freeze-thaw cycles.
Clonality	Polyclonal
Preservative	0.05% Sodium Azide
Isotype	IgG
Purity	Protein G purified
Buffer	PBS containing 0.2% gelatin

Product Description	
Host	Rabbit
Gene ID	4204
Gene Symbol	MECP2
Species	Human, Mouse
Marker	Nucleus Marker
Immunogen	This antibody was generated by immunizing rabbits with a mixture of synthetic peptides corresponding to amino acids 11-25 and 181-195 of human MeCP2.

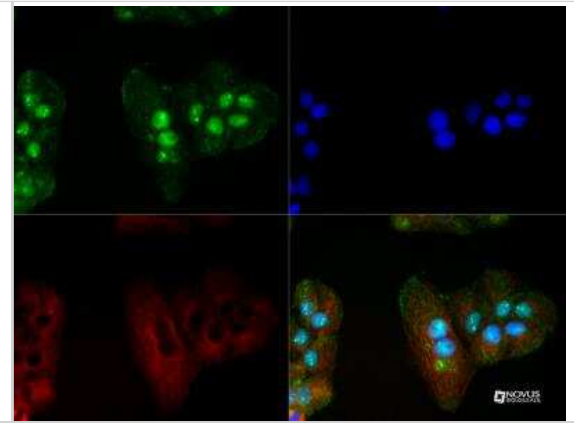
Product Application Details	
Applications	Western Blot, Immunocytochemistry/ Immunofluorescence, Immunohistochemistry, Immunohistochemistry-Paraffin
Recommended Dilutions	Western Blot 2 ug/ml, Immunohistochemistry 1-2 ug/ml, Immunocytochemistry/ Immunofluorescence 5 ug/ml, Immunohistochemistry-Paraffin 1-2 ug/ml
Application Notes	In HeLa, a 53 kDa band is observed.

**Images**

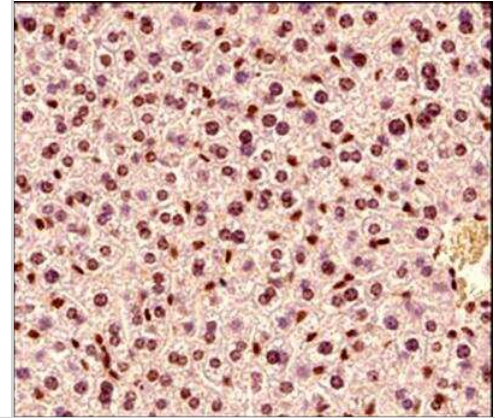
Western Blot: MeCP2 Antibody [NB100-56326] - Analysis of MeCP2 in HeLa cell lysate using this antibody.



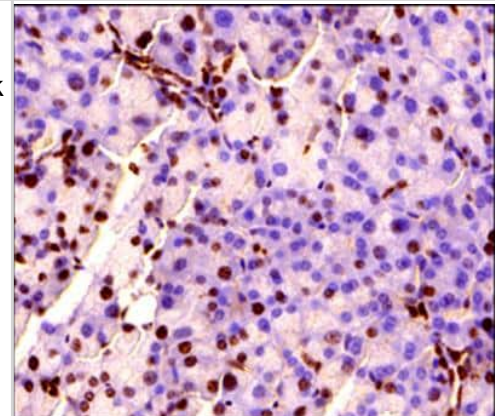
Immunocytochemistry/Immunofluorescence: MeCP2 Antibody [NB100-56326] - This antibody was tested in A431 cells at a 1:200 dilution against Dylight 488 (Green). Alpha tubulin and nuclei were counterstained against Dylight 568 (Red) and DAPI (Blue), respectively.



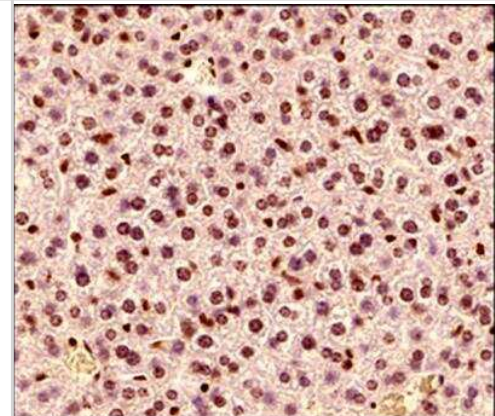
Immunohistochemistry-Paraffin: MeCP2 Antibody [NB100-56326] - Mouse liver tissue using this antibody at 1:500 dilution. The antibody generated a very strong/specific nuclear staining with weak to negligible cytoplasmic signal in the hepatocytes, kupffer cells, and in the endothelial cells of blood vessels.



Immunohistochemistry-Paraffin: MeCP2 Antibody [NB100-56326] - Tissue section of mouse pancreas using this antibody at 1:500 dilution. The antibody generated a very strong/specific nuclear staining with weak to negligible cytoplasmic signal in majority of the cells from acini, ducts and Islets of Langerhans in the section.



Immunohistochemistry-Paraffin: MeCP2 Antibody [NB100-56326] - Mouse liver tissue using this antibody at 1:500 dilution. The antibody generated a very strong/specific nuclear staining with weak to negligible cytoplasmic signal in the hepatocytes, kupffer cells, and in the endothelial cells of blood vessels.



## Publications

Ruddock-D'Cruz NT, Xue J, Wilson KJ et al. Dynamic changes in the localization of five members of the methyl binding domain (MBD) gene family during murine and bovine preimplantation embryo development. Mol Reprod Dev. 2008-01-01 [PMID: 17546630] (WB)

### Details:

IF [bovine embryos (Fig 3) and mouse embryos (Fig 4)] and for WB [bovine heart, (supplementary data)] 1. MBD1 mAb (IMG-306) 2. MBD3/MBD2 mAb (IMG-296A) 3. MBD4 pAb (IMG-285).





### **Novus Biologicals USA**

10730 E. Briarwood Avenue  
Centennial, CO 80112  
USA  
Phone: 303.730.1950  
Toll Free: 1.888.506.6887  
Fax: 303.730.1966  
nb-customerservice@bio-techne.com

### **Bio-Techne Canada**

21 Canmotor Ave  
Toronto, ON M8Z 4E6  
Canada  
Phone: 905.827.6400  
Toll Free: 855.668.8722  
Fax: 905.827.6402  
canada.inquires@bio-techne.com

### **Bio-Techne Ltd**

19 Barton Lane  
Abingdon Science Park  
Abingdon, OX14 3NB, United Kingdom  
Phone: (44) (0) 1235 529449  
Free Phone: 0800 37 34 15  
Fax: (44) (0) 1235 533420  
info.EMEA@bio-techne.com

### **General Contact Information**

www.novusbio.com  
Technical Support: nb-technical@bio-techne.com  
Orders: nb-customerservice@bio-techne.com  
General: novus@novusbio.com

### **Products Related to NB100-56326**

---

NB800-PC1	HeLa Whole Cell Lysate
HAF008	Goat anti-Rabbit IgG Secondary Antibody [HRP]
NB7160	Goat anti-Rabbit IgG (H+L) Secondary Antibody [HRP]
NBP2-24891	Rabbit IgG Isotype Control

---

### **Limitations**

This product is for research use only and is not approved for use in humans or in clinical diagnosis. Primary Antibodies are guaranteed for 1 year from date of receipt.

For more information on our 100% guarantee, please visit [www.novusbio.com/guarantee](http://www.novusbio.com/guarantee)

Earn gift cards/discounts by submitting a review: [www.novusbio.com/reviews/submit/NB100-56326](http://www.novusbio.com/reviews/submit/NB100-56326)

Earn gift cards/discounts by submitting a publication using this product:  
[www.novusbio.com/publications](http://www.novusbio.com/publications)

