

# Product Datasheet

## NLRP2/NALP2 Antibody NB100-56155

Unit Size: 0.05 ml

Store at 4C short term. Aliquot and store at -20C long term. Avoid freeze-thaw cycles.

[www.novusbio.com](http://www.novusbio.com)



[technical@novusbio.com](mailto:technical@novusbio.com)

### Publications: 1

Protocols, Publications, Related Products, Reviews, Research Tools and Images at:  
[www.novusbio.com/NB100-56155](http://www.novusbio.com/NB100-56155)

Updated 10/23/2024 v.20.1

Earn rewards for product  
reviews and publications.

Submit a publication at [www.novusbio.com/publications](http://www.novusbio.com/publications)

Submit a review at [www.novusbio.com/reviews/destination/NB100-56155](http://www.novusbio.com/reviews/destination/NB100-56155)



**NB100-56155****NLRP2/NALP2 Antibody**

<b>Product Information</b>	
<b>Unit Size</b>	0.05 ml
<b>Concentration</b>	This product is unpurified. The exact concentration of antibody is not quantifiable.
<b>Storage</b>	Store at 4C short term. Aliquot and store at -20C long term. Avoid freeze-thaw cycles.
<b>Clonality</b>	Polyclonal
<b>Preservative</b>	0.02% Sodium Azide
<b>Isotype</b>	IgG
<b>Purity</b>	Unpurified
<b>Buffer</b>	Whole antisera

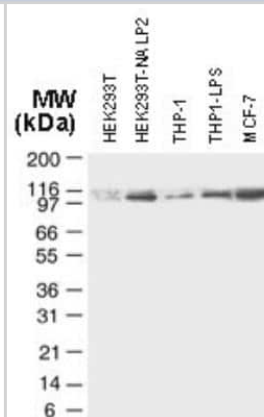
<b>Product Description</b>	
<b>Host</b>	Rabbit
<b>Gene ID</b>	55655
<b>Gene Symbol</b>	NLRP2
<b>Species</b>	Human
<b>Immunogen</b>	A synthetic peptide corresponding to amino acids 97-115 (LKSFNKRKPLSLGITRKER) of human NALP2/PAN1/PYPAF2 was used as immunogen; GenBank no. gi 8923473 ref NP_060322.1

<b>Product Application Details</b>	
<b>Applications</b>	Western Blot, Immunohistochemistry, Immunohistochemistry-Paraffin, Immunoprecipitation
<b>Recommended Dilutions</b>	Western Blot 1:1000-1:2000, Immunohistochemistry, Immunoprecipitation 1:50-1:200, Immunohistochemistry-Paraffin 1:2000-1:5000
<b>Application Notes</b>	Detected NALP2 at approx. 110 kDa in various cell line lysates and in NALP2 transfected cells (Bruey et al, 2004).

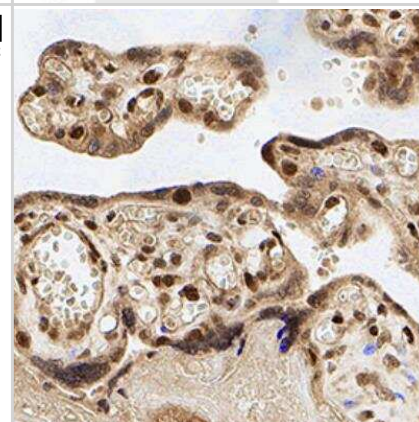


## Images

Western Blot: NLRP2/NALP2 Antibody [NB100-56155] - Analysis of NLRP2/NALP2 using antibody at 1:2000. HEK293T: mock transfected cells, HEK293T-NALP2: NALP2 transiently transfected cells; THP-1: untreated cells; THP1-LPS: cells treated with 1 ug/ml LPS for 4h. MCF-7: untreated cells.



Immunohistochemistry-Paraffin: NLRP2/NALP2 Antibody [NB100-56155] - NLRP2 was detected in immersion fixed paraffin-embedded sections of human placenta using Rabbit Anti-Human NLRP2 polyclonal Antibody (Catalog # NB100-56155) at 1:500 for 1 hour at room temperature followed by incubation with the Anti-Rabbit IgG VisUCyte™ HRP Polymer Antibody (Catalog # VC003). Tissue was stained using DAB (brown) and counterstained with hematoxylin (blue). Specific staining was localized to the cytoplasm in horionic villi.



## Publications

Bruey JM, Bruey-Sedano N, Newman R et al. PAN1/NALP2/PYPAF2, an inducible inflammatory mediator that regulates NF-kappaB and caspase-1 activation in macrophages. J Biol Chem. 2004-12-10 [PMID: 15456791] (WB, Human)

### Details:

Western Blot, Figs 1, 2, 3, 4, 5, 6, 7, 8: various human cell lysates including THP-1 and MCF-7). Validation of NALP2 antibody specificity by siRNA knockdown, Fig. 5B.



### **Novus Biologicals USA**

10730 E. Briarwood Avenue  
Centennial, CO 80112  
USA  
Phone: 303.730.1950  
Toll Free: 1.888.506.6887  
Fax: 303.730.1966  
nb-customerservice@bio-techne.com

### **Bio-Techne Canada**

21 Canmotor Ave  
Toronto, ON M8Z 4E6  
Canada  
Phone: 905.827.6400  
Toll Free: 855.668.8722  
Fax: 905.827.6402  
canada.inquires@bio-techne.com

### **Bio-Techne Ltd**

19 Barton Lane  
Abingdon Science Park  
Abingdon, OX14 3NB, United Kingdom  
Phone: (44) (0) 1235 529449  
Free Phone: 0800 37 34 15  
Fax: (44) (0) 1235 533420  
info.EMEA@bio-techne.com

### **General Contact Information**

www.novusbio.com  
Technical Support: nb-technical@bio-  
techne.com  
Orders: nb-customerservice@bio-techne.com  
General: novus@novusbio.com

### **Products Related to NB100-56155**

---

HAF008	Goat anti-Rabbit IgG Secondary Antibody [HRP]
NB7160	Goat anti-Rabbit IgG (H+L) Secondary Antibody [HRP]
NBP2-24891	Rabbit IgG Isotype Control
NB100-56155PEP	NLRP2/NALP2 Antibody Blocking Peptide

---

### **Limitations**

This product is for research use only and is not approved for use in humans or in clinical diagnosis. Primary Antibodies are guaranteed for 1 year from date of receipt.

For more information on our 100% guarantee, please visit [www.novusbio.com/guarantee](http://www.novusbio.com/guarantee)

Earn gift cards/discounts by submitting a review: [www.novusbio.com/reviews/submit/NB100-56155](http://www.novusbio.com/reviews/submit/NB100-56155)

Earn gift cards/discounts by submitting a publication using this product:  
[www.novusbio.com/publications](http://www.novusbio.com/publications)

