

Product Datasheet

Mcl-1 Antibody NB100-56146

Unit Size: 0.05 ml

Store at 4C short term. Aliquot and store at -20C long term. Avoid freeze-thaw cycles.

www.novusbio.com



technical@novusbio.com

Reviews: 1 Publications: 5

Protocols, Publications, Related Products, Reviews, Research Tools and Images at:
www.novusbio.com/NB100-56146

Updated 10/23/2024 v.20.1

**Earn rewards for product
reviews and publications.**

Submit a publication at www.novusbio.com/publications

Submit a review at www.novusbio.com/reviews/destination/NB100-56146



NB100-56146

Mcl-1 Antibody

Product Information	
Unit Size	0.05 ml
Concentration	This product is unpurified. The exact concentration of antibody is not quantifiable.
Storage	Store at 4C short term. Aliquot and store at -20C long term. Avoid freeze-thaw cycles.
Clonality	Polyclonal
Preservative	0.02% Sodium Azide
Isotype	IgG
Purity	Unpurified
Buffer	Whole antisera

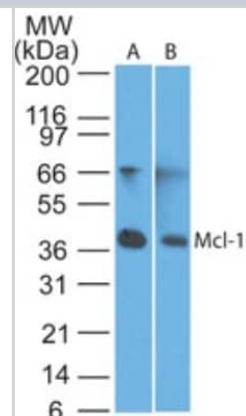
Product Description	
Host	Rabbit
Gene ID	4170
Gene Symbol	MCL1
Species	Human
Immunogen	A synthetic peptide corresponding to amino acids 121-139 (SPEEELDGYEPEPLGKRPA) of human Mcl-1 was used as immunogen, GenBank no. NP_068779.1. The immunogen sequence is 100% conserved in Mcl-1 isoform 1 (GenBank no. NP_068779.1) and isoform 2 (GenBank no. NP_877495.1).

Product Application Details	
Applications	Western Blot, Immunohistochemistry, Immunohistochemistry-Paraffin, Immunoprecipitation
Recommended Dilutions	Western Blot 1:1000-1:2000, Immunohistochemistry, Immunoprecipitation 1:50-1:200, Immunohistochemistry-Paraffin 1:1000-1:5000
Application Notes	Immunoprecipitation, Western Blot, Immunohistochemistry-Paraffin IHC (frozen): Users should optimize according to model and immunodetection system used (secondary reagents)

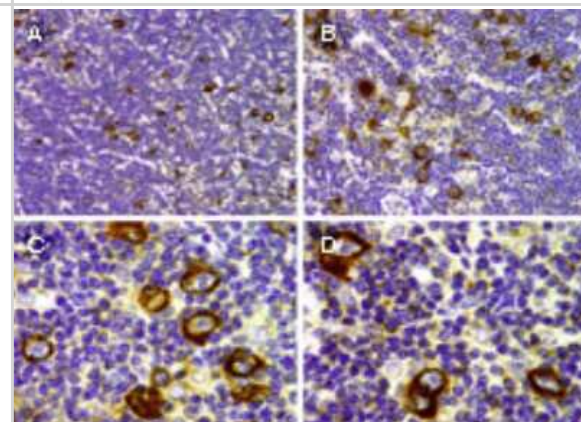


Images

Western Blot: MCL1 Antibody [NB100-56146] - analysis of Mcl-1 in A) Ramos and B) ThP-1 lysate using Mcl-1 antibody at 1:2000.



Immunohistochemistry-Paraffin: MCL1 Antibody [NB100-56146] - Formalin-fixed paraffin-embedded tissue sections of human diffuse, aggressive Non-Hodgkin's lymphoma (NHL) of B cell lineage stained for Mcl-1 expression using Mcl-1 antibody at 1:2000. A-D, Mcl-1 staining shown as varying magnifications. Hematoxylin-eosin counterstain.



Publications

Srivastava S, Gajwani P, Jousma J et al. Nuclear translocation of mitochondrial dehydrogenases as an adaptive cardioprotective mechanism Nature communications 2023-07-19 [PMID: 37468519] (WB, Human)

Details:

Dilutions: 1:1000

Saleh T, El-Sadoni M, Alhesa A Et al. Expression of Senescence and Apoptosis Biomarkers in Synchronous Bilateral Breast Cancer: A Case Report Current oncology (Toronto, Ont.) 2021-09-30 [PMID: 34677245] (IF/IHC, Human)

Reynolds JE, Yang T, Qian L et al. Mcl-1, a member of the Bcl-2 family, delays apoptosis induced by c-Myc overexpression in Chinese hamster ovary cells. Cancer Res. 1994-12-15 [PMID: 7987827] (WB)

Details:

Mcl-1 (IMG-5733). WB: Untransfected Chinese hamster ovary 5AHSmyc cells, Bcl-2 transfected 5AHSmyc cells, and human myeloblastic ML-1 cells treated with TPA, Fig 2C.

Krajewski S, Bodrug S, Krajewska M et al. Immunohistochemical analysis of Mcl-1 protein in human tissues. Differential regulation of Mcl-1 and Bcl-2 protein production suggests a unique role for Mcl-1 in control of programmed cell death in vivo. Am J Pathol. 1995-06-01 [PMID: 7778670]

Ohta K, Iwai K, Kasahara Y et al. Immunoblot analysis of cellular expression of Bcl-2 family proteins, Bcl-2, Bax, Bcl-X and Mcl-1, in human peripheral blood and lymphoid tissues. Int Immunol. 1995-11-01 [PMID: 8580080] (WB, Human)

Details:

WB: Bcl-2 (IMG-5685), Mcl-1 (IMG-5733), Bax (IMG-5682), Bcl-X (IMG-80459). 1. WB: Human PBMC, neutrophils, tonsil, spleen, thymus, Fig 1A.



Novus Biologicals USA

10730 E. Briarwood Avenue
Centennial, CO 80112
USA
Phone: 303.730.1950
Toll Free: 1.888.506.6887
Fax: 303.730.1966
nb-customerservice@bio-techne.com

Bio-Techne Canada

21 Canmotor Ave
Toronto, ON M8Z 4E6
Canada
Phone: 905.827.6400
Toll Free: 855.668.8722
Fax: 905.827.6402
canada.inquires@bio-techne.com

Bio-Techne Ltd

19 Barton Lane
Abingdon Science Park
Abingdon, OX14 3NB, United Kingdom
Phone: (44) (0) 1235 529449
Free Phone: 0800 37 34 15
Fax: (44) (0) 1235 533420
info.EMEA@bio-techne.com

General Contact Information

www.novusbio.com
Technical Support: nb-technical@bio-techne.com
Orders: nb-customerservice@bio-techne.com
General: novus@novusbio.com

Products Related to NB100-56146

NB820-59242	Human Lymph Node Whole Tissue Lysate (Adult Whole Normal)
HAF008	Goat anti-Rabbit IgG Secondary Antibody [HRP]
NB7160	Goat anti-Rabbit IgG (H+L) Secondary Antibody [HRP]
NBP2-24891	Rabbit IgG Isotype Control

Limitations

This product is for research use only and is not approved for use in humans or in clinical diagnosis. Primary Antibodies are guaranteed for 1 year from date of receipt.

For more information on our 100% guarantee, please visit www.novusbio.com/guarantee

Earn gift cards/discounts by submitting a review: www.novusbio.com/reviews/submit/NB100-56146

Earn gift cards/discounts by submitting a publication using this product:
www.novusbio.com/publications

