

# Product Datasheet

## Cre Antibody NB100-56135

Unit Size: 0.05 ml

Store at -20C. Avoid freeze-thaw cycles.

[www.novusbio.com](http://www.novusbio.com)



[technical@novusbio.com](mailto:technical@novusbio.com)

**Reviews: 2 Publications: 2**

Protocols, Publications, Related Products, Reviews, Research Tools and Images at:  
[www.novusbio.com/NB100-56135](http://www.novusbio.com/NB100-56135)

Updated 4/21/2024 v.20.1

**Earn rewards for product  
reviews and publications.**

Submit a publication at [www.novusbio.com/publications](http://www.novusbio.com/publications)

Submit a review at [www.novusbio.com/reviews/destination/NB100-56135](http://www.novusbio.com/reviews/destination/NB100-56135)



**NB100-56135**

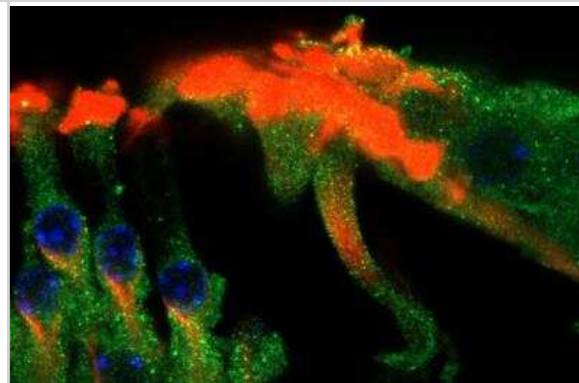
Cre Antibody

<b>Product Information</b>	
<b>Unit Size</b>	0.05 ml
<b>Concentration</b>	This product is unpurified. The exact concentration of antibody is not quantifiable.
<b>Storage</b>	Store at -20C. Avoid freeze-thaw cycles.
<b>Clonality</b>	Polyclonal
<b>Preservative</b>	0.05% Sodium Azide
<b>Isotype</b>	IgG
<b>Purity</b>	Unpurified
<b>Buffer</b>	Whole antisera
<b>Target Molecular Weight</b>	39 kDa
<b>Product Description</b>	
<b>Host</b>	Rabbit
<b>Species</b>	Cre/lox System
<b>Reactivity Notes</b>	Not yet tested in other species.
<b>Immunogen</b>	Full-length recombinant bacteriophage protein CRE was used as immunogen, GenBank no. AAQ14086.1.
<b>Product Application Details</b>	
<b>Applications</b>	Western Blot, Immunohistochemistry, Immunohistochemistry-Frozen, Immunohistochemistry-Paraffin, Immunoprecipitation
<b>Recommended Dilutions</b>	Western Blot 1:1000-1:2000, Immunohistochemistry 1:10-1:500, Immunoprecipitation 1:50-1:200, Immunohistochemistry-Paraffin 1:1000-1:5000, Immunohistochemistry-Frozen 1:10-1:500
<b>Application Notes</b>	IHC (frozen): Users should optimize according to model and immunodetection system used (secondary reagents)

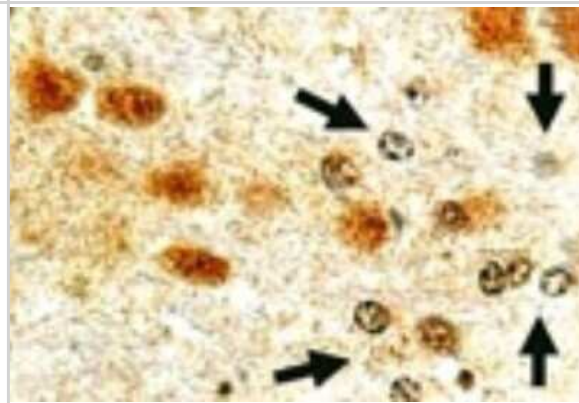


## Images

Immunohistochemistry-Frozen: Cre Antibody [NB100-56135] - Cochlea cross-section of Cre<sup>+/-</sup>-mouse, stained for Cre (green) and counterstained for F-actin (red). Tissue was fixed in 4% paraformaldehyde and incubated overnight with the anti-Cre antibody 1:100 in PBS containing Triton X-100 0.1% and 10% fetal calf serum. Image from verified customer review.



Immunohistochemistry-Paraffin: Cre Antibody [NB100-56135] - Analysis of tissue section from the hippocampus of a Cre transgenic mouse at 1:2000. In this mouse line, Cre is expressed in the brain, predominantly in the nuclei of most types of neurons. Hematoxylin-eosin counterstain. Arrows point to negative glia.



## Publications

Banares S, Zeh K, Krajewska M et al. Novel pan-neuronal Cre-transgenic line for conditional ablation of genes in the nervous system. *Genesis*. 2005-05-01 [PMID: 15828007] (IHC-F)

Details:

1. IMG-5720 (AR-59A): WB., IHC-P. 2. IMG-5721 (AR-59B): WB, IHC-F. 3. IMG-5722 (AR-60A): IHC-P

Copple BL, Kaska S, Wentling C. Hypoxia-inducible factor activation in myeloid cells contributes to the development of liver fibrosis in cholestatic mice. *J Pharmacol Exp Ther*. 2012-05-01 [PMID: 22271822] (IHC-Fr, Mouse)

Details:

IHC (frozen): Fig 1B, D (mouse liver). The Cre antibody (IMG-5720, IMG-5721 or IMG-5722) was used at 1:4000.



### **Novus Biologicals USA**

10730 E. Briarwood Avenue  
Centennial, CO 80112  
USA  
Phone: 303.730.1950  
Toll Free: 1.888.506.6887  
Fax: 303.730.1966  
nb-customerservice@bio-techne.com

### **Bio-Techne Canada**

21 Canmotor Ave  
Toronto, ON M8Z 4E6  
Canada  
Phone: 905.827.6400  
Toll Free: 855.668.8722  
Fax: 905.827.6402  
canada.inquires@bio-techne.com

### **Bio-Techne Ltd**

19 Barton Lane  
Abingdon Science Park  
Abingdon, OX14 3NB, United Kingdom  
Phone: (44) (0) 1235 529449  
Free Phone: 0800 37 34 15  
Fax: (44) (0) 1235 533420  
info.EMEA@bio-techne.com

### **General Contact Information**

www.novusbio.com  
Technical Support: nb-technical@bio-techne.com  
Orders: nb-customerservice@bio-techne.com  
General: novus@novusbio.com

### **Products Related to NB100-56135**

---

HAF008	Goat anti-Rabbit IgG Secondary Antibody [HRP]
NB7160	Goat anti-Rabbit IgG (H+L) Secondary Antibody [HRP]
NBP2-24891	Rabbit IgG Isotype Control
NB100-56133PEP	Cre Antibody Blocking Peptide

---

### **Limitations**

This product is for research use only and is not approved for use in humans or in clinical diagnosis. Primary Antibodies are guaranteed for 1 year from date of receipt.

For more information on our 100% guarantee, please visit [www.novusbio.com/guarantee](http://www.novusbio.com/guarantee)

Earn gift cards/discounts by submitting a review: [www.novusbio.com/reviews/submit/NB100-56135](http://www.novusbio.com/reviews/submit/NB100-56135)

Earn gift cards/discounts by submitting a publication using this product:  
[www.novusbio.com/publications](http://www.novusbio.com/publications)

