

Product Datasheet

Cre Antibody [FITC] NB100-56133F

Unit Size: 0.05 ml

Store at 4C in the dark.

www.novusbio.com



technical@novusbio.com

Protocols, Publications, Related Products, Reviews, Research Tools and Images at:
www.novusbio.com/NB100-56133F

Updated 10/23/2024 v.20.1

Earn rewards for product
reviews and publications.

Submit a publication at www.novusbio.com/publications

Submit a review at www.novusbio.com/reviews/destination/NB100-56133F



NB100-56133F

Cre Antibody [FITC]

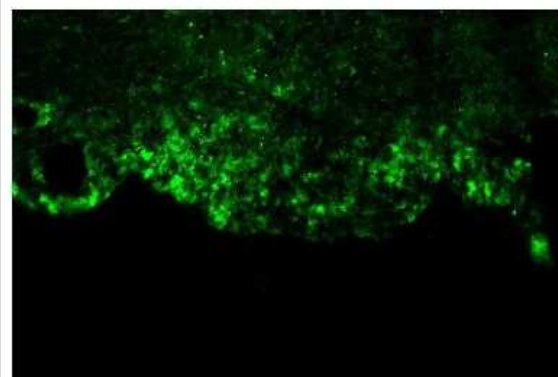
Product Information	
Unit Size	0.05 ml
Concentration	Please see the vial label for concentration. If unlisted please contact technical services.
Storage	Store at 4C in the dark.
Clonality	Polyclonal
Preservative	0.05% Sodium Azide
Isotype	IgG
Conjugate	FITC
Purity	Immunogen affinity purified
Buffer	PBS

Product Description	
Host	Rabbit
Species	Mouse, Cre/lox System
Reactivity Notes	Specific to Cre/lox system (Bacteriophage). Shown to detect Cre protein in Cre-transfected human cells (HeLa) and Cre-transgenic mice. Mouse reactivity reported in scientific literature (PMID: 28194015).
Immunogen	A synthetic peptide made to a portion of bacteriophage protein CRE (within amino acids 50-100). [UniProt# P06956]

Product Application Details	
Applications	Western Blot, Immunocytochemistry/ Immunofluorescence, Immunohistochemistry, Immunohistochemistry-Frozen, Immunohistochemistry-Paraffin, Immunoprecipitation
Recommended Dilutions	Western Blot, Immunohistochemistry, Immunocytochemistry/ Immunofluorescence, Immunoprecipitation, Immunohistochemistry-Paraffin, Immunohistochemistry-Frozen
Application Notes	Optimal dilution of this antibody should be experimentally determined.

Images

Immunohistochemistry: Cre Antibody [FITC] [NB100-56133F] - Perfused mouse brain tissue. Dilution is 1:4000. This image was submitted via customer Review.





Novus Biologicals USA

10730 E. Briarwood Avenue
Centennial, CO 80112
USA
Phone: 303.730.1950
Toll Free: 1.888.506.6887
Fax: 303.730.1966
nb-customerservice@bio-techne.com

Bio-Techne Canada

21 Canmotor Ave
Toronto, ON M8Z 4E6
Canada
Phone: 905.827.6400
Toll Free: 855.668.8722
Fax: 905.827.6402
canada.inquires@bio-techne.com

Bio-Techne Ltd

19 Barton Lane
Abingdon Science Park
Abingdon, OX14 3NB, United Kingdom
Phone: (44) (0) 1235 529449
Free Phone: 0800 37 34 15
Fax: (44) (0) 1235 533420
info.EMEA@bio-techne.com

General Contact Information

www.novusbio.com
Technical Support: nb-technical@bio-techne.com
Orders: nb-customerservice@bio-techne.com
General: novus@novusbio.com

Products Related to NB100-56133F

NBP2-24892	Rabbit IgG Isotype Control [FITC]
NB100-56133PEP	Cre Antibody Blocking Peptide
NB100-56134PEP	Cre Antibody Blocking Peptide

Limitations

This product is for research use only and is not approved for use in humans or in clinical diagnosis. Primary Antibodies are guaranteed for 1 year from date of receipt.

For more information on our 100% guarantee, please visit www.novusbio.com/guarantee

Earn gift cards/discounts by submitting a review: www.novusbio.com/reviews/submit/NB100-56133F

Earn gift cards/discounts by submitting a publication using this product:
www.novusbio.com/publications

