

# Product Datasheet

## Bcl-xL Antibody NB100-56104

Unit Size: 0.05 ml

Store at -20C. Avoid freeze-thaw cycles.

[www.novusbio.com](http://www.novusbio.com)



[technical@novusbio.com](mailto:technical@novusbio.com)

**Reviews: 1 Publications: 3**

Protocols, Publications, Related Products, Reviews, Research Tools and Images at:  
[www.novusbio.com/NB100-56104](http://www.novusbio.com/NB100-56104)

Updated 10/23/2024 v.20.1

**Earn rewards for product  
reviews and publications.**

Submit a publication at [www.novusbio.com/publications](http://www.novusbio.com/publications)

Submit a review at [www.novusbio.com/reviews/destination/NB100-56104](http://www.novusbio.com/reviews/destination/NB100-56104)



**NB100-56104**

## Bcl-xL Antibody

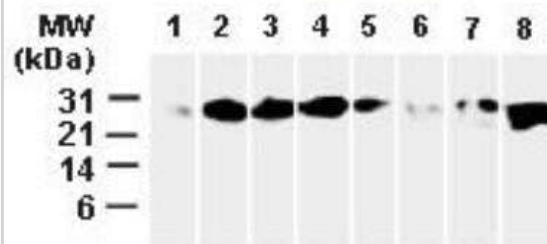
| Product Information |  |
|---------------------|--|
| Unit Size           | 0.05 ml  |
| Concentration       | This product is unpurified. The exact concentration of antibody is not quantifiable. |
| Storage             | Store at -20C. Avoid freeze-thaw cycles.   |
| Clonality           | Polyclonal   |
| Preservative        | 0.05% Sodium Azide   |
| Isotype             | IgG  |
| Purity              | Unpurified   |
| Buffer              | Whole antisera   |

| Product Description     |   |
|-------------------------|---|
| Host                    | Rabbit  |
| Gene ID                 | 598   |
| Gene Symbol             | BCL2L1  |
| Species                 | Human, Mouse, Rat, Canine   |
| Reactivity Notes        | Mouse, Canine, Rat reactivity reported in scientific literature (PMID: 15380478).   |
| Specificity/Sensitivity | Bcl-XL+S  |
| Immunogen               | A synthetic peptide corresponding to amino acids 46-66 (ETPSAINGNPSWHLADSPAVN) of human Bcl-xL was used as immunogen; GenBank no. CAA80661.1. The immunogen sequence is 100% conserved in Bcl-XS. The immunogen sequence is 100% in multiple species including mouse, rat, dog, cow, gerbil, and sheep. |

| Product Application Details |   |
|-----------------------------|---|
| Applications                | Western Blot, Immunohistochemistry, Immunohistochemistry-Frozen, Immunohistochemistry-Paraffin, Immunoprecipitation   |
| Recommended Dilutions       | Western Blot 1:1000-1:2000, Immunohistochemistry, Immunoprecipitation 1:50-1:200, Immunohistochemistry-Paraffin 1:1000-1:5000, Immunohistochemistry-Frozen 1:10-1:500 |
| Application Notes           | IHC (frozen): Users should optimize according to model and immunodetection system used (secondary reagents)   |

**Images**

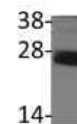
Western Blot: Bcl-xL Antibody [NB100-56104] - WB analysis of tissue lysates from breast surgical tumor tissue biopsies (Lanes 1-7). Bcl-XS is not detected and variable amounts of Bcl-XL (~30 kDa) is detected. Lane 8. Recombinant Bcl-XL (positive control).



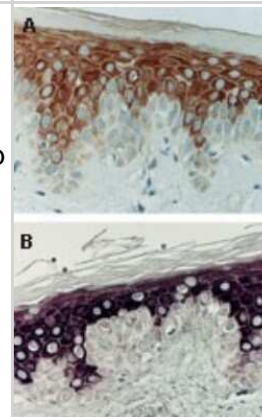
Western Blot: Bcl-xL Antibody [NB100-56104] - Analysis of Bcl-xL in Daoy whole cell lysate using anti-Bcl-xL antibody. Image from verified customer review.

BCLXL NB100-56104

38  
28  
14



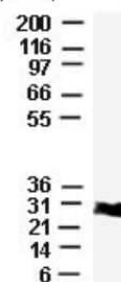
Immunohistochemistry-Paraffin: Bcl-xL Antibody [NB100-56104] - Formalin-fixed paraffin-embedded sections of human epidermis stained for Bcl-xL expression. The bottom image was negative for Bcl-xL expression. The adjacent stratum spinosum and middle stratum granulosum layers were both very positive for Bcl-xL expression. The top stratum corneum consisting mainly of dead or peeling cells were both negative for Bcl-xL expression.



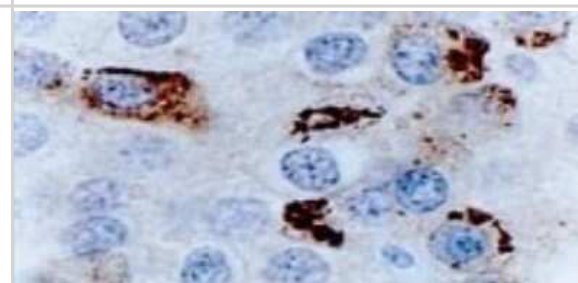
Western Blot: Bcl-xL Antibody [NB100-56104] - Analysis of Bcl-xL in lysates from isolated rat liver mitochondria using this antibody. The antibody detected Bcl-xL at ~30 kDa.

MW  
(kDa)

200 —  
116 —  
97 —  
66 —  
55 —  
  
36 —  
31 —  
21 —  
14 —  
6 —



Immunohistochemistry-Paraffin: Bcl-xL Antibody [NB100-56104] - Analysis of Bcl-xL in human breast carcinoma at 1:2000. Formalin-fixed, paraffin-embedded tissue section from invasive ductal carcinoma. An organellar/mitochondrial pattern of Bcl-xL staining is observed in the cytosol of tumor cells.



## Publications

Srivastava S, Gajwani P, Jousma J et al. Nuclear translocation of mitochondrial dehydrogenases as an adaptive cardioprotective mechanism Nature communications 2023-07-19 [PMID: 37468519] (WB, Human)

Details:

Dilutions: 1:1000

Saleh T, El-Sadoni M, Alhesa A Et al. Expression of Senescence and Apoptosis Biomarkers in Synchronous Bilateral Breast Cancer: A Case Report Current oncology (Toronto, Ont.) 2021-09-30 [PMID: 34677245] (IF/IHC, Human)

Krajewska M, Rosenthal RE, Mikolajczyk J et al. Early processing of Bid and caspase-6, -8, -10, -14 in the canine brain during cardiac arrest and resuscitation. Exp Neurol. 2004-10-01 [PMID: 15380478] (IHC-P, WB, Mouse, Canine, Rat)

Details:

Antibodies cited: 1. Caspase-9 (Active/Cleaved), IMG-5705: WB: Fig 1A (recombinant human caspase-9), Fig 4A (recombinant human caspase-9, rat brain), Fig 4B-F (isolated mitochondria from rat liver or heart). Fig 5 (PC12 cells) IHC (P): Fig 2d-k (rat kidney)





### **Novus Biologicals USA**

10730 E. Briarwood Avenue  
Centennial, CO 80112  
USA  
Phone: 303.730.1950  
Toll Free: 1.888.506.6887  
Fax: 303.730.1966  
nb-customerservice@bio-techne.com

### **Bio-Techne Canada**

21 Canmotor Ave  
Toronto, ON M8Z 4E6  
Canada  
Phone: 905.827.6400  
Toll Free: 855.668.8722  
Fax: 905.827.6402  
canada.inquires@bio-techne.com

### **Bio-Techne Ltd**

19 Barton Lane  
Abingdon Science Park  
Abingdon, OX14 3NB, United Kingdom  
Phone: (44) (0) 1235 529449  
Free Phone: 0800 37 34 15  
Fax: (44) (0) 1235 533420  
info.EMEA@bio-techne.com

### **General Contact Information**

www.novusbio.com  
Technical Support: nb-technical@bio-techne.com  
Orders: nb-customerservice@bio-techne.com  
General: novus@novusbio.com

### **Products Related to NB100-56104**

---

|            |   |
|------------|---|
| NBL1-07946 | Bcl-xL Overexpression Lysate                        |
| HAF008     | Goat anti-Rabbit IgG Secondary Antibody [HRP]       |
| NB7160     | Goat anti-Rabbit IgG (H+L) Secondary Antibody [HRP] |
| NBP2-24891 | Rabbit IgG Isotype Control                          |

---

### **Limitations**

This product is for research use only and is not approved for use in humans or in clinical diagnosis. Primary Antibodies are guaranteed for 1 year from date of receipt.

For more information on our 100% guarantee, please visit [www.novusbio.com/guarantee](http://www.novusbio.com/guarantee)

Earn gift cards/discounts by submitting a review: [www.novusbio.com/reviews/submit/NB100-56104](http://www.novusbio.com/reviews/submit/NB100-56104)

Earn gift cards/discounts by submitting a publication using this product:  
[www.novusbio.com/publications](http://www.novusbio.com/publications)

