

Product Datasheet

CEP170 Antibody NB100-55317

Unit Size: 0.1 ml

Store at 4C. Do not freeze.

www.novusbio.com



technical@novusbio.com

Publications: 1

Protocols, Publications, Related Products, Reviews, Research Tools and Images at:
www.novusbio.com/NB100-55317

Updated 9/9/2025 v.20.1

Earn rewards for product
reviews and publications.

Submit a publication at www.novusbio.com/publications

Submit a review at www.novusbio.com/reviews/destination/NB100-55317



NB100-55317

CEP170 Antibody

Product Information	
Unit Size	0.1 ml
Concentration	0.2 mg/ml
Storage	Store at 4C. Do not freeze.
Clonality	Polyclonal
Preservative	0.09% Sodium Azide
Isotype	IgG
Purity	Immunogen affinity purified
Buffer	TBS and 0.1% BSA

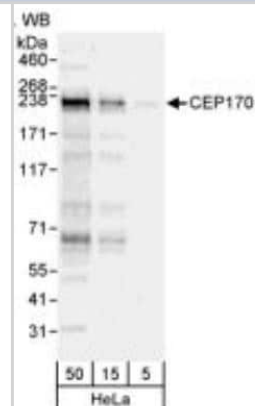
Product Description	
Description	Novus Biologicals Rabbit CEP170 Antibody (NB100-55317) is a polyclonal antibody validated for use in WB, ICC/IF, IP and ChIP. Anti-CEP170 Antibody: Cited in 1 publication. All Novus Biologicals antibodies are covered by our 100% guarantee.
Host	Rabbit
Gene ID	9859
Gene Symbol	CEP170
Species	Human
Immunogen	The immunogen recognized by this antibody maps to a region between residue 1534 and the C-terminus (residue 1584) of human centrosomal protein 170kDa using the numbering given in entry NP_055627.2 (GeneID 9859).

Product Application Details	
Applications	Western Blot, Immunocytochemistry/ Immunofluorescence, Immunoprecipitation, Chromatin Immunoprecipitation Sequencing
Recommended Dilutions	Western Blot 1:2000-1:10000, Immunocytochemistry/ Immunofluorescence 1:100-1:500, Immunoprecipitation 2-5 ug/mg lysate, Chromatin Immunoprecipitation Sequencing
Application Notes	For ICC/IF: Formaldehyde fixation with Triton-X 100 permeabilization is recommended.

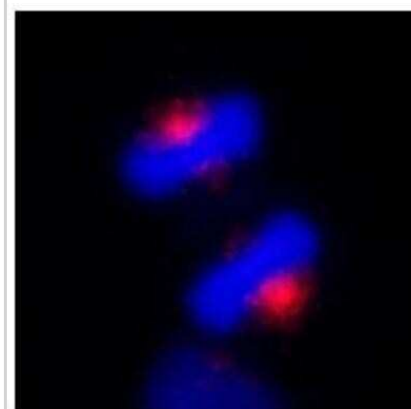


Images

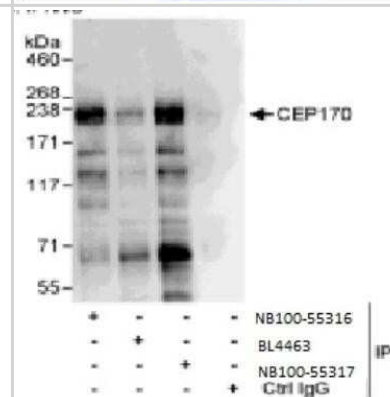
Western Blot: CEP170 Antibody [NB100-55317] - HeLa whole cell lysate (5, 15, and 50 ug) stained with CEP170 Antibody diluted at 0.04 ug/ml.



Immunocytochemistry/Immunofluorescence: CEP170 Antibody [NB100-55317] - NBF-fixed asynchronous HeLa cells, stained with CEP170 Antibody diluted at 1:200. Detection: Red-fluorescent goat anti-rabbit IgG highly cross-adsorbed Antibody Hilyte Plus(TM) 555.



Immunoprecipitation: CEP170 Antibody [NB100-55317] - HeLa whole cell lysate (1 mg) immunoprecipitated by rabbit anti-CEPT170 antibodies NB100-55317 at 3 ug/mg lysate. CEP170 was also immunoprecipitated by rabbit anti-CEP170 antibodies NB100-55317 and BL4463, which recognize upstream epitopes.



Publications

Baron Gaillard CL, Pallesi-Pocachard E, Massey-Harroche D et al. Hook2 is involved in the morphogenesis of the primary cilium. *Mol Biol Cell* 2011-12-01 [PMID: 21998199]



Novus Biologicals USA

10730 E. Briarwood Avenue
Centennial, CO 80112
USA
Phone: 303.730.1950
Toll Free: 1.888.506.6887
Fax: 303.730.1966
nb-customerservice@bio-techne.com

Bio-Techne Canada

21 Canmotor Ave
Toronto, ON M8Z 4E6
Canada
Phone: 905.827.6400
Toll Free: 855.668.8722
Fax: 905.827.6402
canada.inquires@bio-techne.com

Bio-Techne Ltd

19 Barton Lane
Abingdon Science Park
Abingdon, OX14 3NB, United Kingdom
Phone: (44) (0) 1235 529449
Free Phone: 0800 37 34 15
Fax: (44) (0) 1235 533420
info.EMEA@bio-techne.com

General Contact Information

www.novusbio.com
Technical Support: nb-technical@bio-techne.com
Orders: nb-customerservice@bio-techne.com
General: novus@novusbio.com

Products Related to NB100-55317

NBP2-33376H	Blue Marker Antibody (6F4-F6) [HRP]
HAF008	Goat anti-Rabbit IgG Secondary Antibody [HRP]
NB7160	Goat anti-Rabbit IgG (H+L) Secondary Antibody [HRP]
NBP2-24891	Rabbit IgG Isotype Control

Limitations

This product is for research use only and is not approved for use in humans or in clinical diagnosis. Primary Antibodies are guaranteed for 1 year from date of receipt.

For more information on our 100% guarantee, please visit www.novusbio.com/guarantee

Earn gift cards/discounts by submitting a review: www.novusbio.com/reviews/submit/NB100-55317

Earn gift cards/discounts by submitting a publication using this product:
www.novusbio.com/publications

